



# Boutwells Landing

The Commons

Assisted Living

# Welcome to Boutwells Landing

For a setting that offers freedom combined with the comfort of knowing supportive services are available, choose The Commons assisted living.

Shape your daily life as you desire with the support of Liberty Personally Designed Living™, an innovative approach to personal care and assistance. Nicely appointed common areas are well-suited for group or casual gatherings, while social and recreational opportunities create a sense of community.

---

## Included Amenities

- Escorts to meals and activities for first 5 days
- Choice of two meals daily
- Flexible dining hours
- Weekly light housekeeping and linen change
- Urgent call system
- 24 hour on-site Resident Assistant staffing
- Wings® wellness intellectually stimulating programs, spiritual care services, group fitness classes, fitness center with pool, volunteer opportunities
- Professional on-site staff
- Pastoral care
- Designated complimentary transportation to shopping and outings
- Health and wellness checks
- Utilities (heat, electric, central air conditioning, water, sewer, and trash)
- Telephone service
- Cable services available
- Open public Wi-Fi
- Laundry facilities
- Access to Town Center amenities and programs
- Priority access to other Presbyterian Homes & Services living and care options based on availability
- Smoke-free community



## Other Conveniences

*Additional fees may apply*

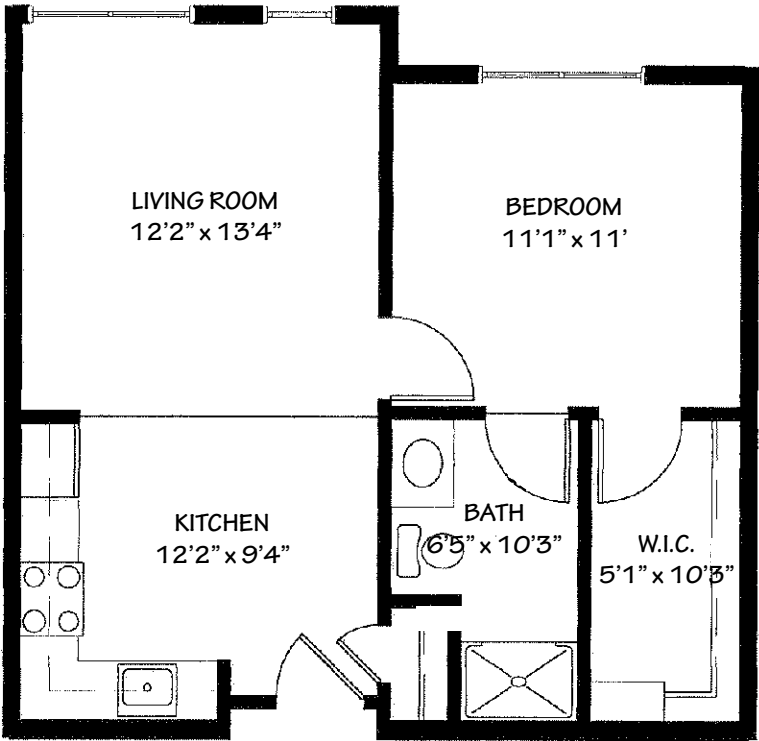
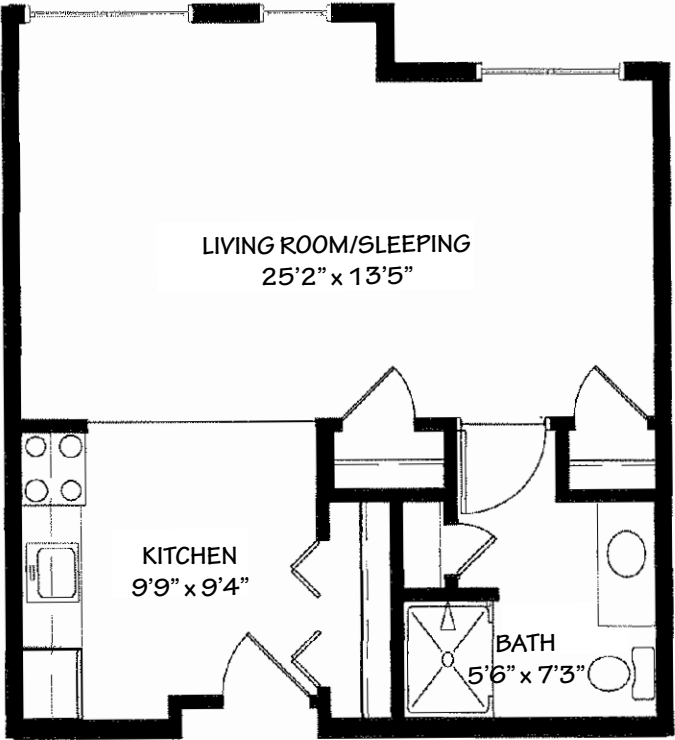
- Specialized nursing and therapy visits
- Access to designated Physician or Nurse Practitioner for on-site services
- Assistance with arranging transportation to medical and social service appointments
- Assistance with accessing community resources and social services
- Additional home care and hospice services available through Optage®
- Certified personal trainers
- Laundry service
- Transportation for shopping and outings
- Additional housekeeping
- Restaurant-style dining
- Guest dining
- Guest suites
- Third meal option
- Second occupant, \$800 plus personal care costs
- Outpatient therapy — physical, occupational and speech therapy

## Distinctive Details

- Bright open floor plans emphasize spacious rooms
- Fully equipped kitchen with stainless steel refrigerator, microwave, stove and oven
- Pecan cabinetry and quartz countertops
- Blinds on all windows
- Individually controlled heat and central air conditioning
- Bathroom with roll-in shower and grab bar

# Sample Floor Plans

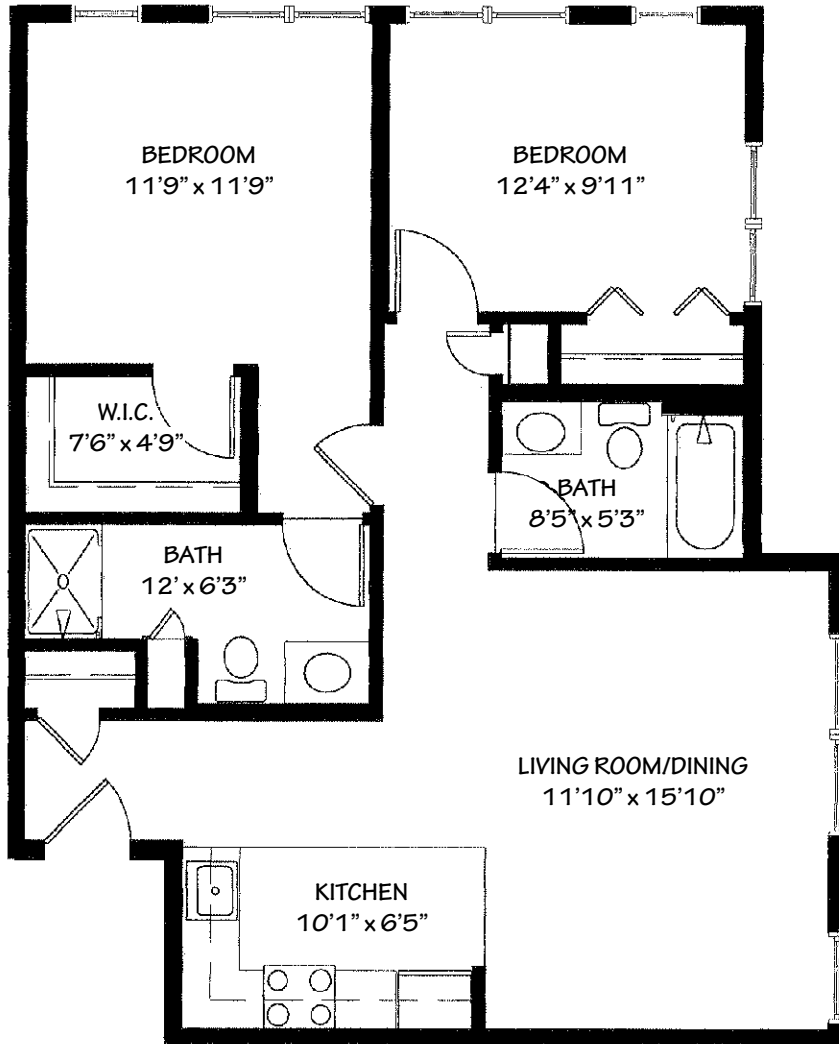
**Eldridge**  
Studio | 516 Sq. Ft.



**Greeley**  
One Bedroom | 584 Sq. Ft.

# Staples

Two Bedroom | 928 Sq. Ft.



Boutwells Landing

Assisted Living  
651-275-5000

*Floor plans, features and amenities are subject to change without notice. Stated dimensions and square footage are approximate. Additional floor plans may be available. Please ask about availability.*

At Boutwells Landing, we know each individual is just that—an individual. And our services reflect that philosophy. Select from a broad range of options depending on your personal preferences. It's all based on the principle of choice. **And the choice is yours.**

## Monthly Personal Care Fee Ranges\*

Points from Assessment	Monthly Fee
0–9	\$460 (required)
10–101	\$920–\$2,300
102–239	\$2,760–\$4,560
240–354	\$4,770–\$5,610
355–492	\$5,820–\$6,870

\*The care fee ranges above are for estimating purposes only.

## Included in Your Personal Care Fees:

- Initial and ongoing nursing assessments
- Scheduled nursing hours and on-call nursing available for staff consultation
- Nurse liaison with health care professionals
- Nurse scheduling of lab draws
- Nurse maintaining clinical record information
- Daily reassurance check

## Monthly Rental Fee

Apartment	Sq. Ft.	Rate
Studio	476–618	\$3,865–\$4,315
One Bedroom	511–631	\$4,215–\$4,765
Two Bedroom	844–928	\$5,240–\$5,710

## Assisted Living Service Fees

In addition to the monthly rental fee, a monthly personal care fee for assisted living services is required based on the amount of care provided. The following steps help to assess your care needs and guide you through the residency process:

**Step 1: Reserve an apartment at Boutwells Landing.** We will help you through the reservation process and provide you with essential information in preparation for the following steps.

**Step 2: Schedule an assisted living care assessment appointment.** A nurse will meet with you to complete an initial assessment and help create a personalized care plan. The assessment will include a review of your individualized needs and a recommendation of services that could be provided to meet those needs. Each service is assigned a point value and the assessment will give you an estimated total number of points.\* To view the care assessment, scan the QR code or visit [Boutwells.org](https://Boutwells.org) and click on "Resident Documents."



**Step 3: Schedule a residency agreement appointment.** We will review the residency agreement, payment information and other resources with you. Once the residency agreement process is complete, your move-in date will be confirmed.

*Pricing subject to change. Residency agreement available upon request.*



**651-275-5000**

5600 Norwich Parkway  
Oak Park Heights, MN 55082

**Boutwells.org**

*Due to COVID-19 or other future circumstance, some features may be temporarily unavailable or offered in a different way. We anticipate features will become available in original form once it is prudent to do so. Presbyterian Homes & Services (PHS) communities comply with applicable federal civil rights laws and do not discriminate on the basis of race, color, national origin, age, disability or sex.*

PresHomes.org

Español (Spanish): Llame al 1-844-558-6125

Hmoob (Hmong): Hu rau 1-844-558-6125

Tagalog (Filipino): Tumawag sa 1-844-558-6125

Professional management by PHS Management, LLC © 2021 Presbyterian Homes and Services  
All faiths welcome. Equal housing opportunity.

## Living Options

- Townhomes
- Row-style homes
- Senior apartments
- Assisted living apartments
- Assisted living memory care
- Transitional care
- Care center
- Care center memory care

 **presbyterian  
homes & services**  
*freedom to live well®*