



EagleCrest
The Terrace
Senior Apartments

Welcome to EagleCrest

At EagleCrest, your ideal residence is complemented by an assortment of conveniences and amenities to enrich your life.

Enjoy maintenance-free living and comfortable, convenient floor plans. Regardless of which plan you choose, it's sure to reflect your sense of style as you add your own personal touch.

Included Amenities

- Continental breakfast daily
- Light housekeeping (twice monthly)
- Utilities (heat, central air conditioning, water, sewer, and trash)
- Telephone service
- Basic cable television service
- Open public Wi-Fi
- Laundry facilities
- Designated complimentary transportation to shopping and outings
- Wings® wellness intellectually stimulating programs, spiritual care services, group fitness classes, fitness center, volunteer opportunities
- Pastoral care
- Controlled entrance
- Community connected by indoor walkways
- Lawn care and snow removal
- Month-to-month residency agreement
- Property tax and building insurance
- Apartment and building maintenance
- Priority access to other Presbyterian Homes & Services living and care options based on availability
- Smoke-free community

Other Conveniences

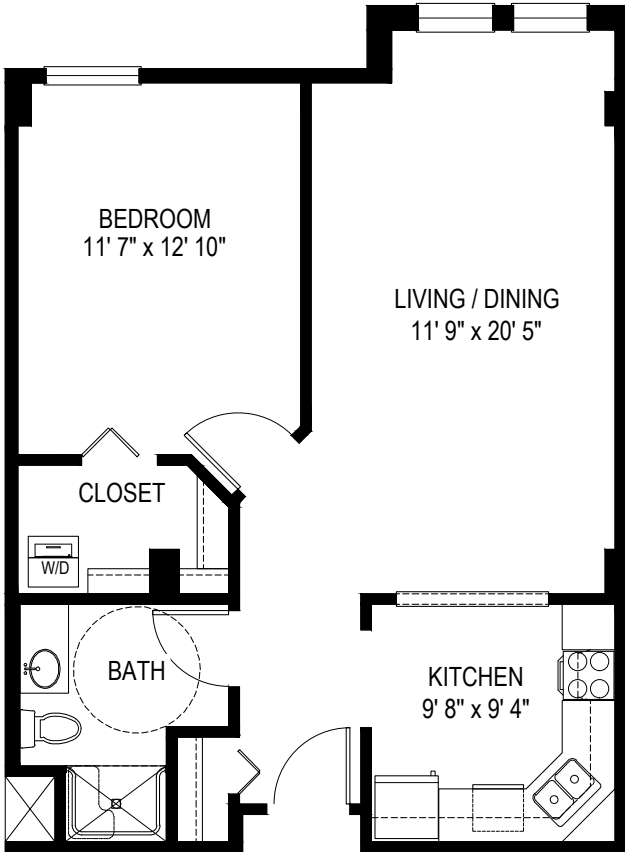
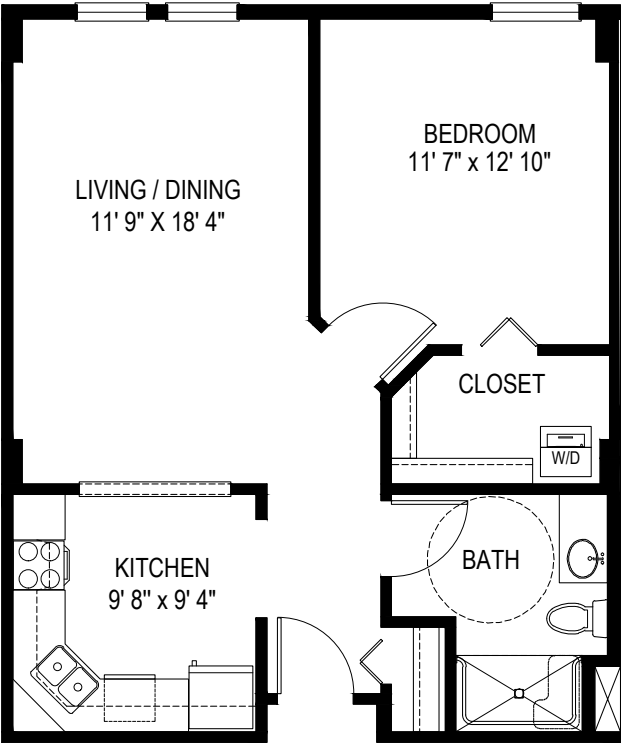
Additional fees may apply

- Underground heated parking with car wash bay
- Access to restaurant-style dining
- Transportation for medical appointments
- Home care and hospice services available through Optage®
- Electric
- Beauty/barber
- Additional storage
- Handyman
- Pets are welcome (guidelines apply)
- Outpatient therapy — physical, occupational and speech therapy



Sample Floor Plans

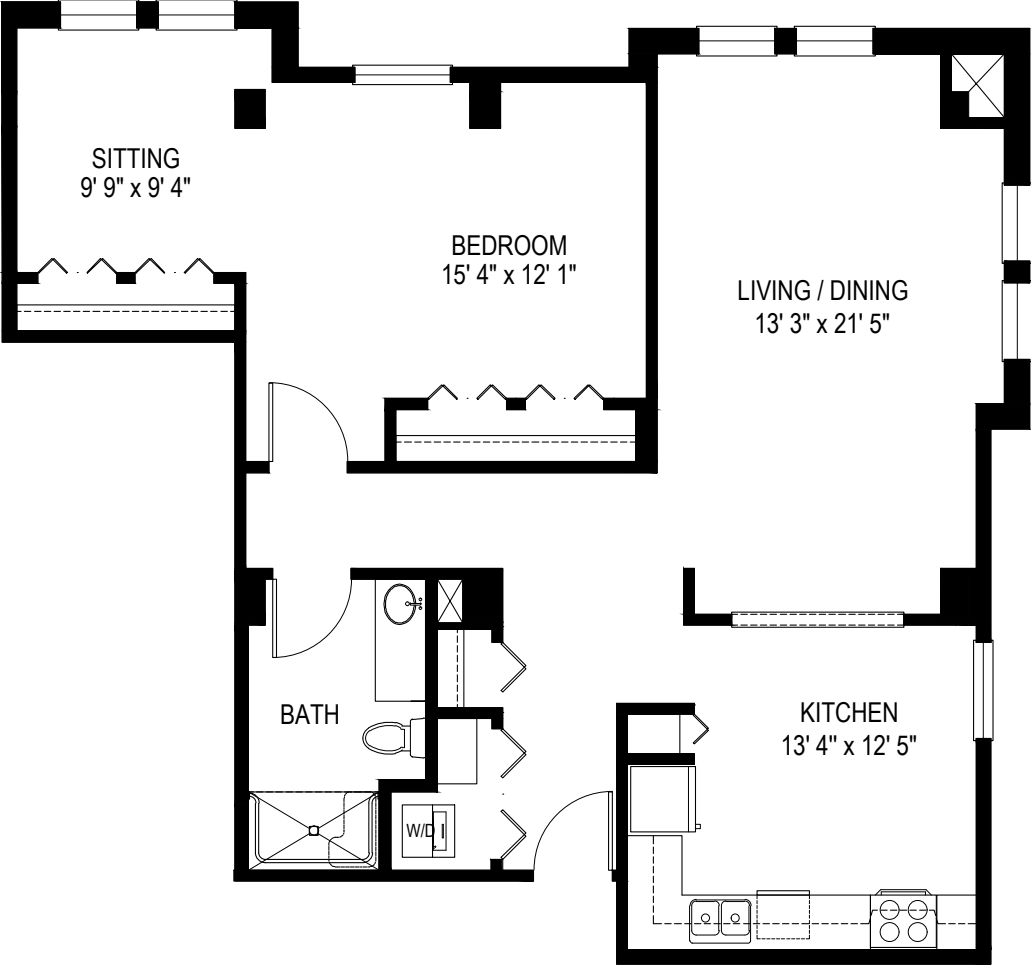
Apple Blossom
One Bedroom | 687 Sq. Ft.



Bellflower
One Bedroom | 750 Sq. Ft.

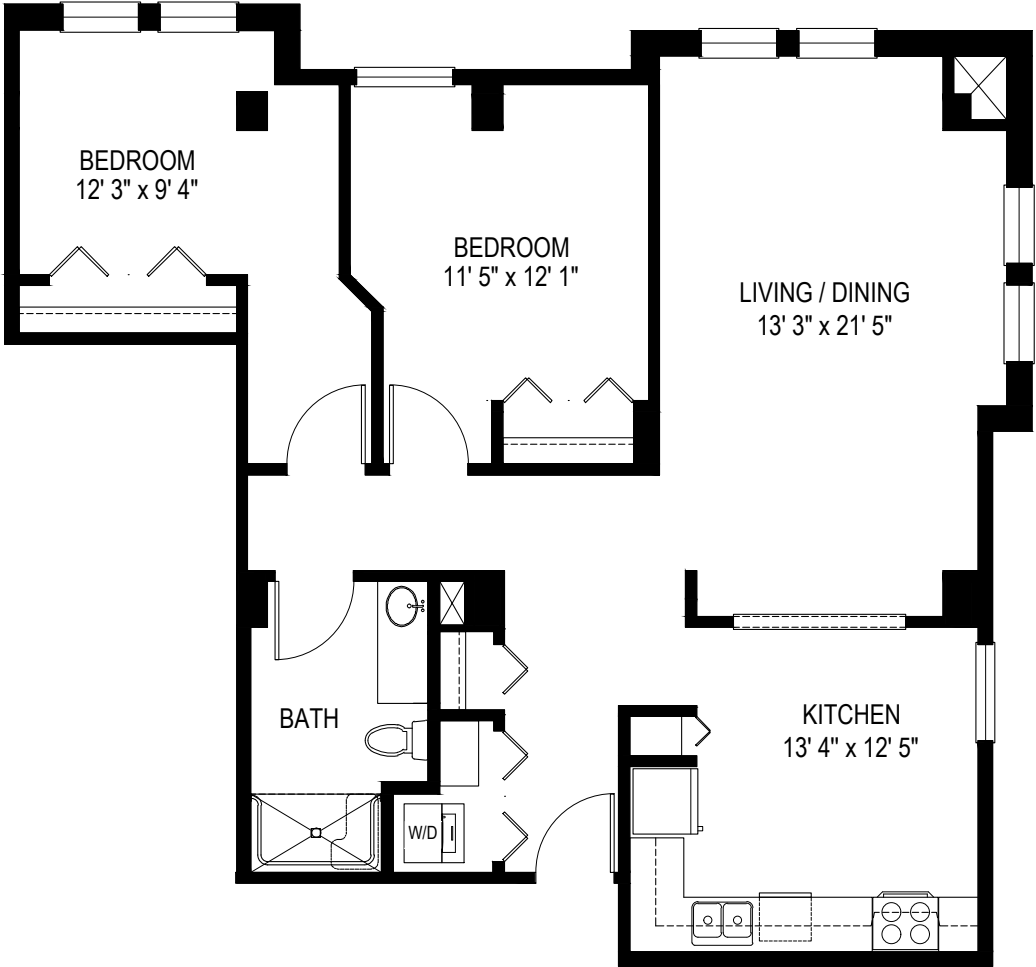
Forget-Me-Not

One Bedroom/Den | 1,075 Sq. Ft.



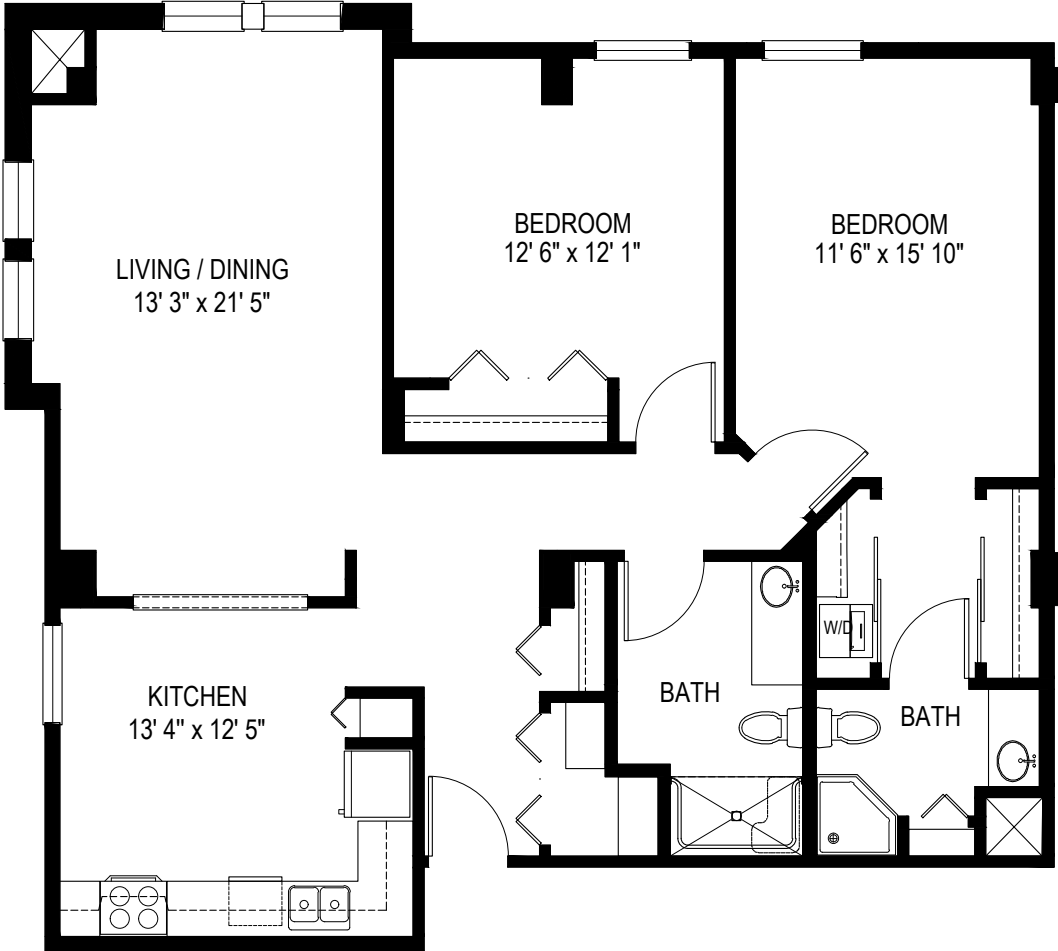
Foxglove

Two Bedroom | 1,090 Sq. Ft.



Geranium

Two Bedroom/Two Bath | 1,245 Sq. Ft.



Floor plans, features and amenities are subject to change without notice. Stated dimensions and square footage are approximate. Additional floor plans may be available. Please ask about availability.

Our senior apartments offer maintenance-free living and comfortable floor plans with value and convenience. Nicely appointed common areas are well-suited for group events and casual gatherings. Social, recreational and volunteer opportunities help create a sense of community.

Distinctive Details

- Bright open floor plans emphasize spacious rooms, some with nine foot ceilings
- Fully equipped kitchen with roll-out shelves in lower cabinets
- Custom cabinetry and millwork throughout
- Convenient in-home laundry with washer and dryer
- Blinds on all windows
- Individually controlled heat and central air conditioning
- Bathroom with roll-in or step-in shower, or tub with shower
- Walk-in closets in most apartments

Monthly Rental Fee

Apartment	Sq. Ft.	Rate
One Bedroom	687-1,100	\$2,080-\$3,220
Two Bedroom	931-1,393	\$2,700-\$3,875



Pricing subject to change. Residency agreement available upon request.



651-628-3000

2945 Lincoln Drive
Roseville, MN 55113

EagleCrestPHS.org

Due to COVID-19 or other future circumstance, some features may be temporarily unavailable or offered in a different way. We anticipate features will become available in original form once it is prudent to do so. Presbyterian Homes & Services (PHS) communities comply with applicable federal civil rights laws and do not discriminate on the basis of race, color, national origin, age, disability or sex.

PresHomes.org

Español (Spanish): *Llame al 1-844-558-6125*

Hmoob (Hmong): *Hu rau 1-844-558-6125*

Tagalog (Filipino): *Tumawag sa 1-844-558-6125*

Professional management by PHS Management, LLC © 2021 Presbyterian Homes and Services
All faiths welcome. Equal housing opportunity.

9/23 

Living Options

- Senior apartments
- Assisted living apartments
- Enhanced assisted living apartments
- Assisted living memory care residence

 **presbyterian
homes & services**
freedom to live well®