



SummerHouse of Shoreview

Senior Apartments

Welcome to SummerHouse of Shoreview

At SummerHouse of Shoreview, your ideal residence is complemented by an assortment of conveniences and amenities to enrich your life.

Enjoy maintenance-free living and comfortable, convenient floor plans. Regardless of which plan you choose, it's sure to reflect your sense of style as you add your own personal touch.

Included Amenities

- Utilities (water, sewer, and trash)
- Controlled entrance
- Designated complimentary transportation to shopping and outings
- Pastoral care
- Wings® wellness intellectually stimulating programs, spiritual care services, group fitness classes, fitness center, volunteer opportunities
- Weekly continental breakfast
- Basic cable television service
- Month-to-month residency agreement
- Property tax and building insurance
- Apartment and building maintenance
- Lawn care and snow removal
- Priority access to other Presbyterian Homes & Services living and care options based on availability
- Smoke-free environment

Other Conveniences

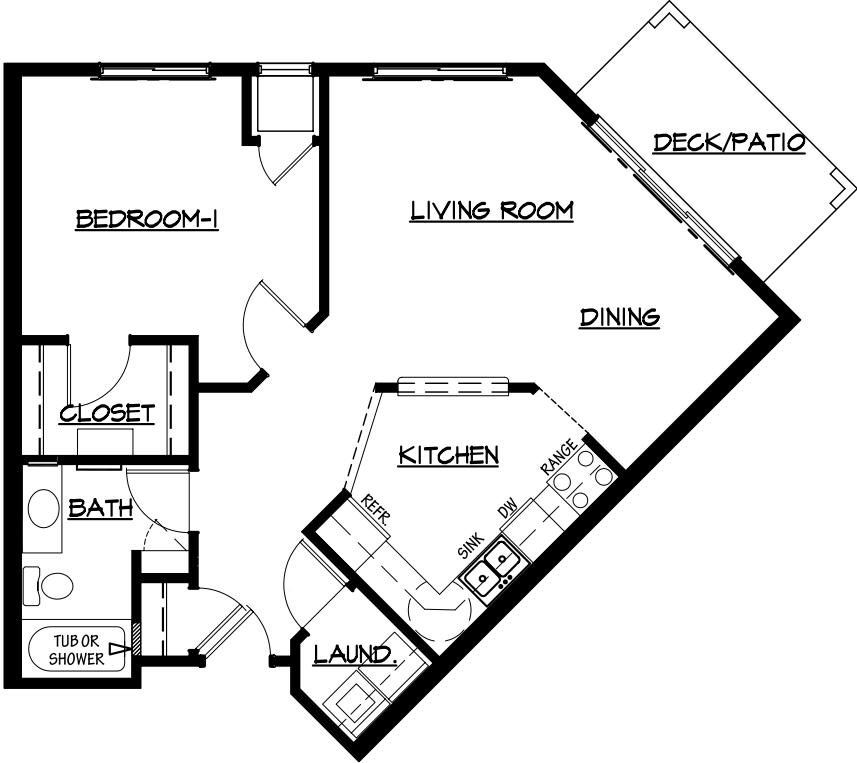
Additional fees may apply

- Heat and electric service
- Underground heated parking with car wash bay
- Handyman
- Transportation for shopping and outings
- Guest suite
- Home delivered meals, home care and hospice services available through Optage®
- Pets are welcome (guidelines apply)

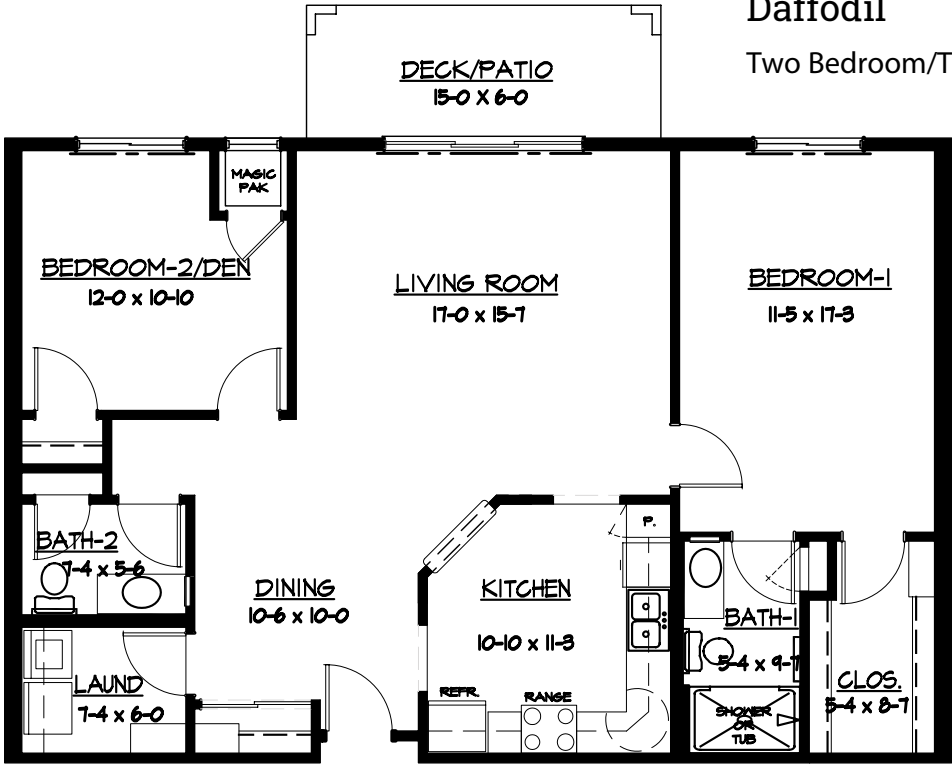


Sample Floor Plans

Buttercup
One Bedroom | 795 Sq. Ft.

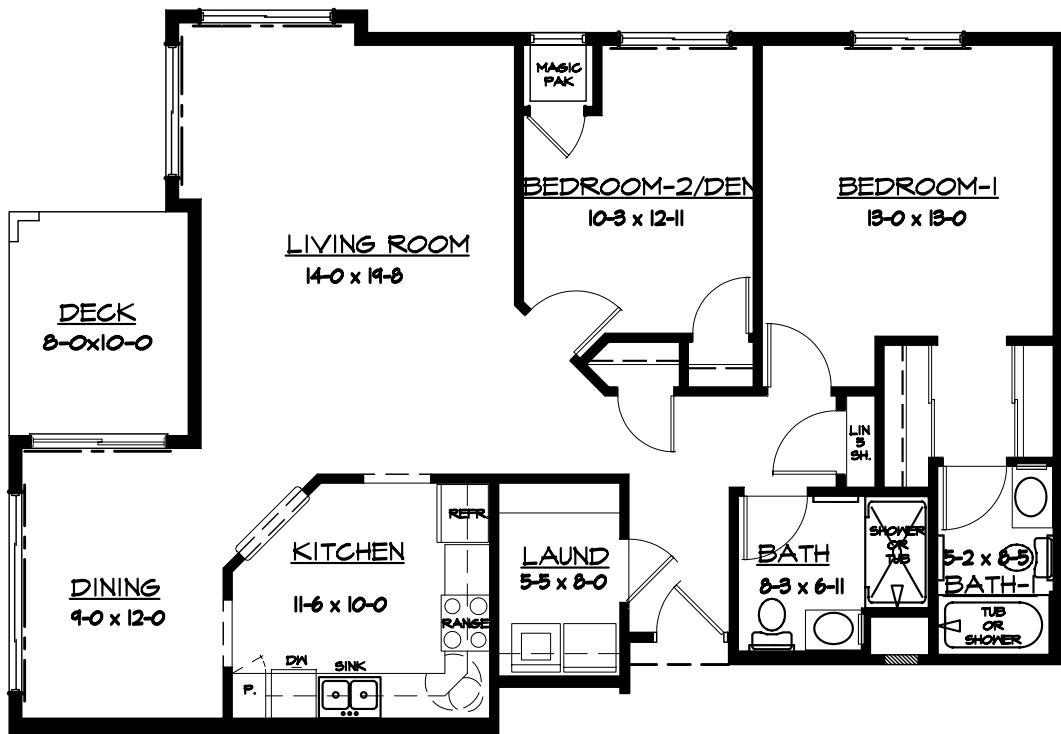


Daffodil
Two Bedroom/Two Bath | 1,175 Sq. Ft.



Foxglove

Two Bedroom/Two Bath | 1,254 Sq. Ft.



SummerHouse of Shoreview

Senior Apartments
651-765-3900

Floor plans, features and amenities are subject to change without notice. Stated dimensions and square footage are approximate. Additional floor plans may be available. Please ask about availability.

Our senior apartments offer maintenance-free living and comfortable floor plans with value and convenience. Nicely appointed common areas are well-suited for group events and casual gatherings. Social, recreational and volunteer opportunities help create a sense of community.

Distinctive Details

- Bright open floor plans emphasize spacious rooms
- Fully equipped kitchen with stove, self-cleaning oven, refrigerator, microwave, dishwasher and garbage disposal
- Oak cabinetry throughout
- Blinds on all windows
- Thoughtfully designed bathroom with grab bar and either a tub with shower or walk-in shower
- Convenient in-home laundry with full size washer and dryer
- Walk-in storage
- Individually controlled heat and central air conditioning
- Deck or patio with most apartments
- Storage closet in garage area

Monthly Rental Fee

Apartment	Sq. Ft.	Entrance Deposit	Rate	
			<i>With Entrance Deposit</i>	<i>Without Entrance Deposit</i>
One Bedroom	756–795	\$35,700–\$37,700	\$1,435–\$1,520	\$1,614–\$1,709
Two Bedroom	1,064–1,254	\$50,000–\$59,200	\$2,020–\$2,365	\$2,270–\$2,661

The entrance deposit essentially reduces the monthly fee and is 100% refundable; it is only required for the “Monthly Fee with Entrance Deposit” option.



Pricing subject to change. Residency agreement available upon request.



651-765-3900

4655 North Victoria Street
Shoreview, MN 55126

SummerHouseShoreview.org

Due to COVID-19 or other future circumstance, some features may be temporarily unavailable or offered in a different way. We anticipate features will become available in original form once it is prudent to do so. Presbyterian Homes & Services (PHS) communities comply with applicable federal civil rights laws and do not discriminate on the basis of race, color, national origin, age, disability or sex.

PresHomes.org

Español (Spanish): *Llame al 1-844-558-6125*

Hmoob (Hmong): *Hu rau 1-844-558-6125*

Tagalog (Filipino): *Tumawag sa 1-844-558-6125*

Professional management by PHS Management, LLC © 2021 Presbyterian Homes and Services
All faiths welcome. Equal housing opportunity.

9/23 

 **presbyterian
homes & services**
freedom to live well®