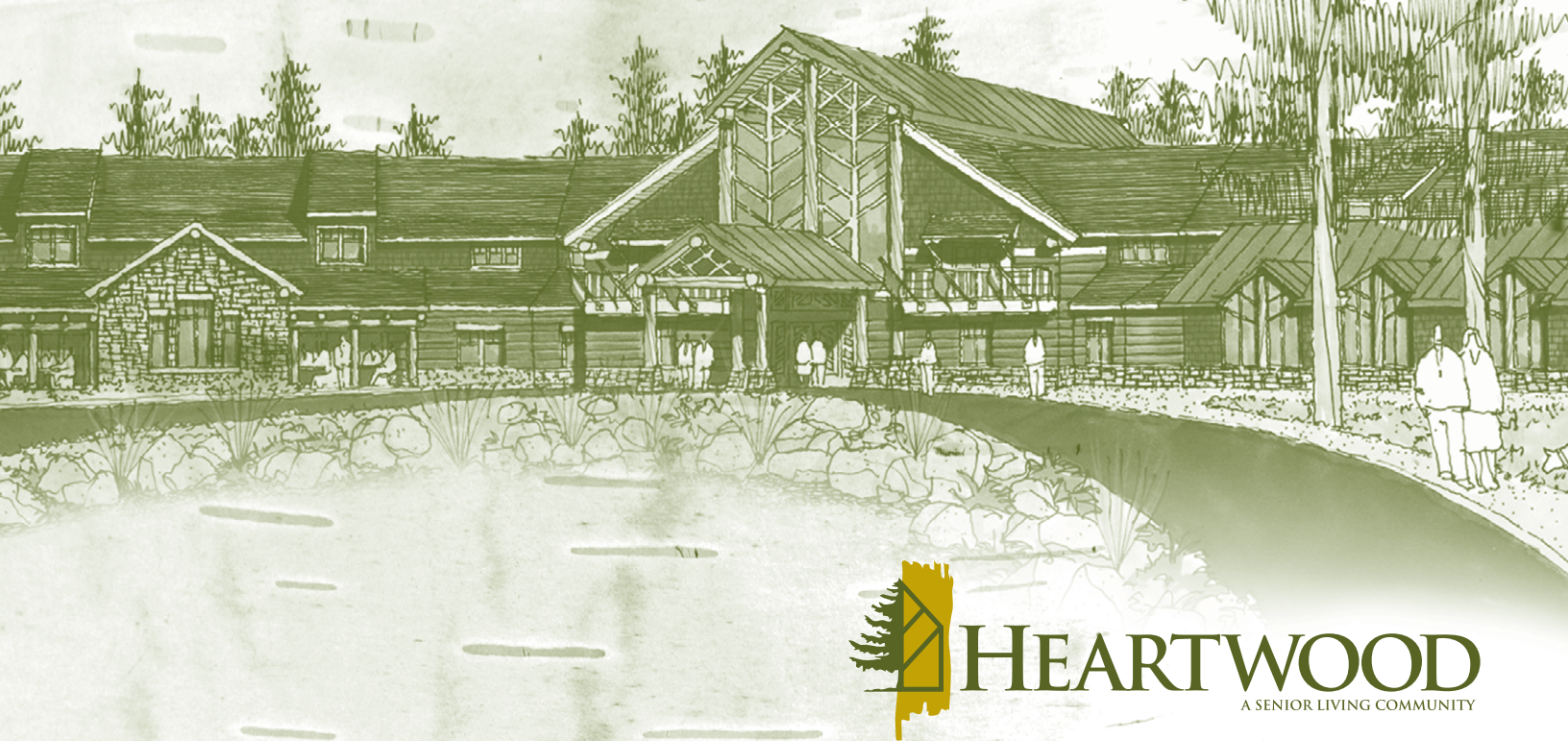


The Commons

ASSISTED LIVING



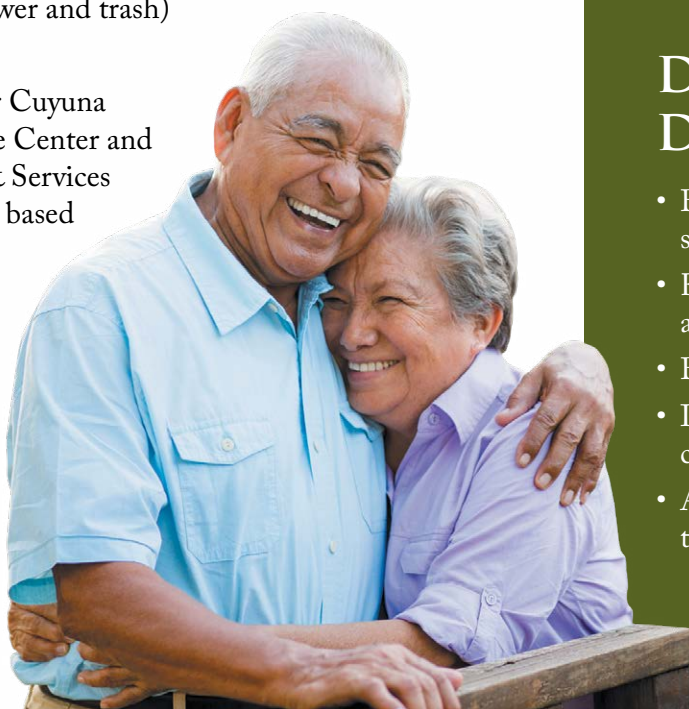
WELCOME TO HEARTWOOD

For a setting that offers freedom combined with the comfort of knowing supportive services are available, choose The Commons assisted living.

Shape your daily life as you desire with the support of Liberty Personally Designed Living™, an innovative approach to personal care and assistance. Nicely appointed common areas are well-suited for group or casual gatherings, while social and recreational opportunities create a sense of community.

INCLUDED AMENITIES

- Choice of two meals daily served restaurant-style
- Flexible dining hours
- Weekly light housekeeping and linen change
- Urgent call system
- 24 hour on-site Resident Assistant staffing
- Designated complimentary transportation to shopping and outings
- Social programs and events
- Pastoral care
- Health and wellness clinic
- Telephone service
- Basic cable television service
- Utilities (heat, electric, central air conditioning, water, sewer and trash)
- Laundry facilities
- Priority access to other Cuyuna Regional Medical Care Center and Presbyterian Homes & Services living and care options based on availability
- Smoke-free community



OTHER CONVENIENCES

Additional fees may apply

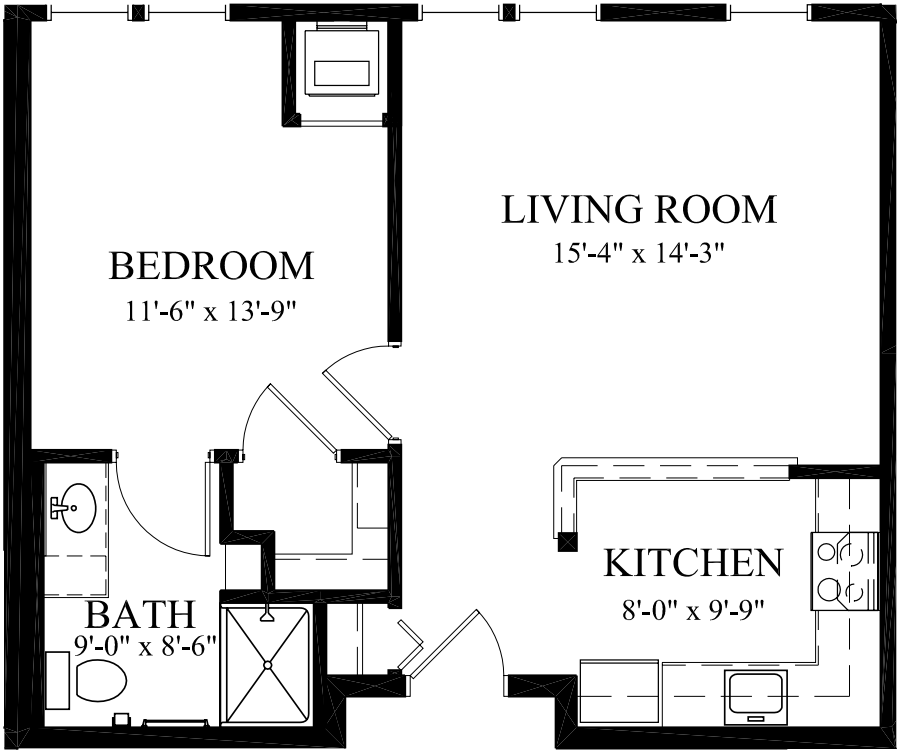
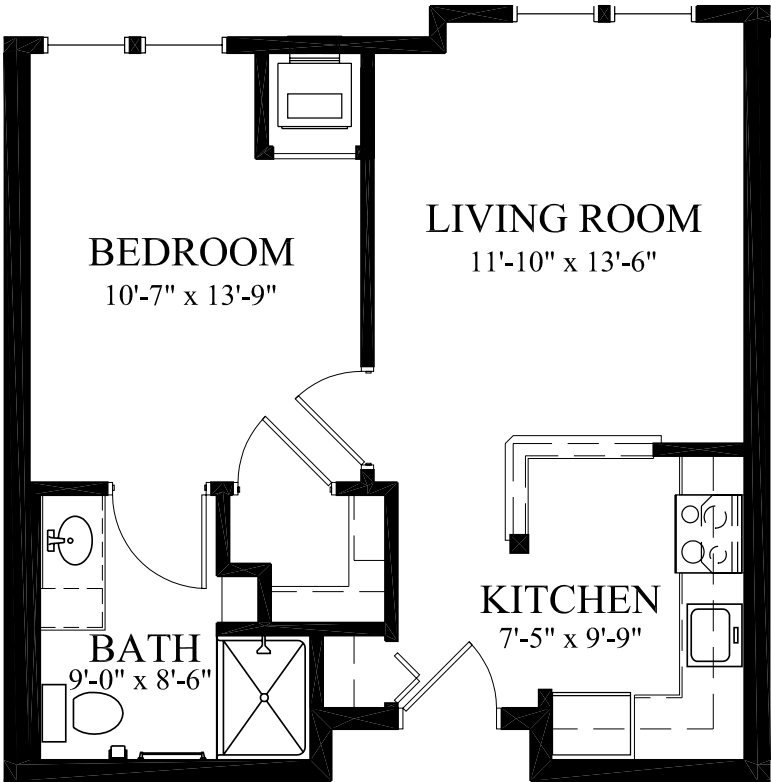
- Specialized nursing and therapy visits (physical, occupational and speech)
- On-site laboratory services
- Assistance with arranging transportation to medical and social service appointments
- Assistance with accessing community resources and social services
- Additional housekeeping
- Laundry service
- Transportation for shopping and outings
- Underground heated parking and car wash bay
- Third meal option
- Guest dining
- Guest suites
- Second occupant, \$800 plus personal care fee
- Pets are welcome (guidelines apply)

DISTINCTIVE DETAILS

- Bright open floor plans emphasize spacious rooms with nine foot ceilings
- Kitchen with stove/oven, refrigerator and built-in microwave
- Blinds on all windows
- Individually controlled heat and central air conditioning
- Accessible bathroom with elevated toilet, roll-in shower and grab bar

SAMPLE FLOOR PLANS

Balsam Fir
561 Sq. Ft.
One Bedroom

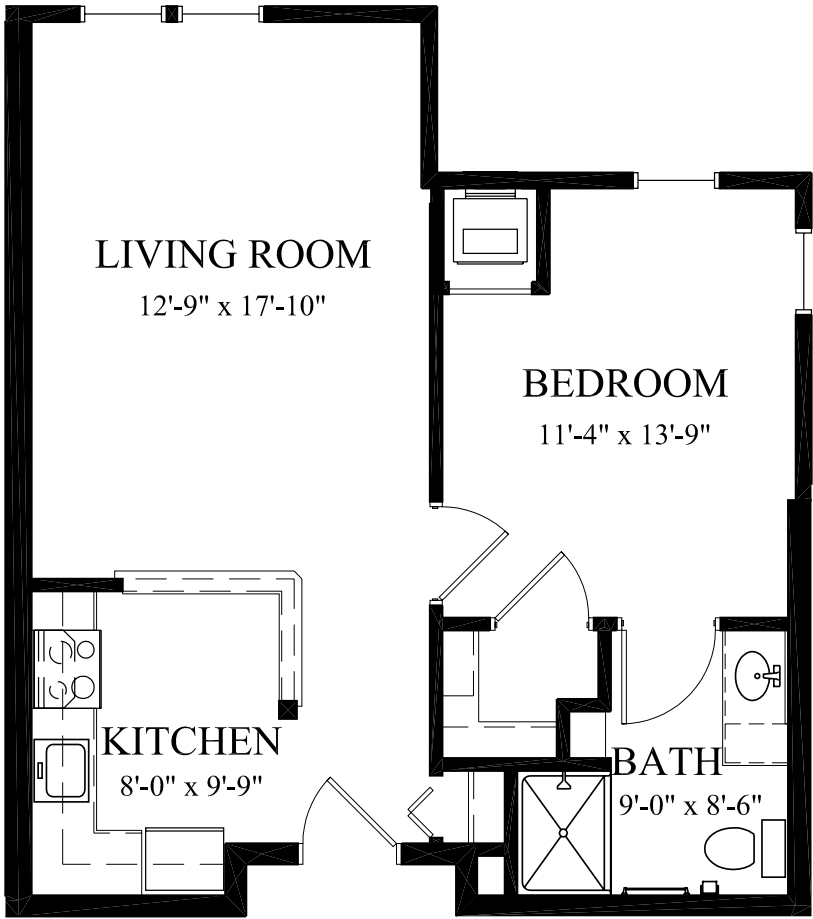


Cedar
650 Sq. Ft.
One Bedroom

Hickory

658 Sq. Ft.

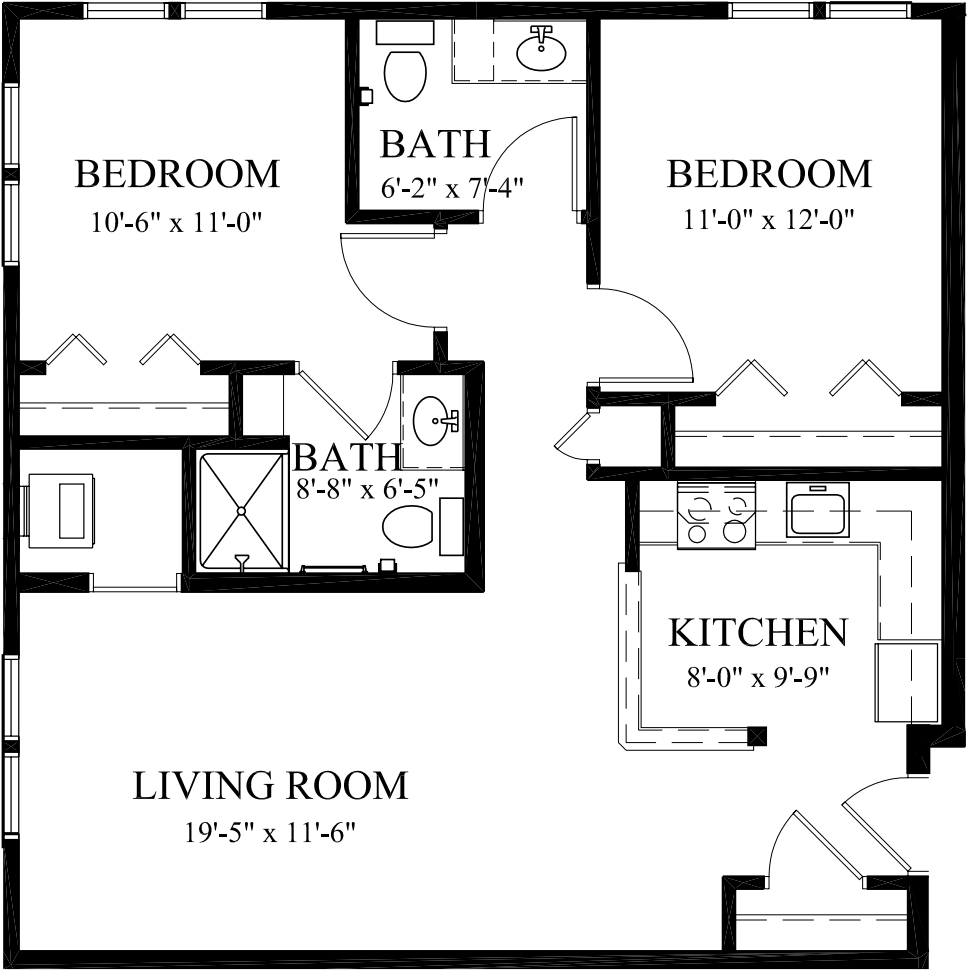
One Bedroom



Magnolia

950 Sq. Ft.

Two Bedroom



Walnut

951 Sq. Ft.

Two Bedroom



Floor plans, features and amenities are subject to change without notice. Stated dimensions and square footage are approximate. Additional floor plans may be available. Please ask about availability.

At Heartwood, we know each individual is just that—an individual. And our services reflect that philosophy. Select from a broad range of options depending on your personal preferences. It's all based on the principle of choice. And the choice is yours.

MONTHLY PERSONAL CARE FEE RANGES*

Points from Assessment	Monthly Fee
0–9	\$350 (<i>required</i>)
10–101	\$700–\$1,750
102–239	\$2,100–\$3,510
240–354	\$3,690–\$4,410
355–492	\$4,590–\$5,490

**The care fee ranges above are for estimating purposes only.*

INCLUDED IN YOUR PERSONAL CARE FEES:

- Initial and ongoing nursing assessments
- Scheduled nursing hours and on-call nursing available for staff consultation
- Nurse liaison with health care professionals
- Nurse scheduling of lab draws
- Nurse maintaining clinical record information
- Daily reassurance check

MONTHLY RENTAL FEE

APARTMENT	SQ. FT.	RATE
One Bedroom	561–658	\$3,730 – \$4,045
Two Bedroom/Two Bath	950	\$4,390

ASSISTED LIVING SERVICE FEES

In addition to the monthly rental fee, a monthly personal care fee for assisted living services is required based on the amount of care provided. The following steps help to assess your care needs and guide you through the residency process:

- Step 1: Reserve an apartment at Heartwood.** We will help you through the reservation process and provide you with essential information in preparation for the following steps.
- Step 2: Schedule an assisted living care assessment appointment.** A nurse will meet with you to complete an initial assessment and help create a personalized care plan. The assessment will include a review of your individualized needs and a recommendation of services that could be provided to meet those needs. Each service is assigned a point value and the assessment will give you an estimated total number of points.* To view the care assessment, scan the QR code or visit HeartwoodLiving.org and click on “Resident Documents.”



- Step 3: Schedule a residency agreement appointment.** We will review the residency agreement, payment information and other resources with you. Once the residency agreement process is complete, your move-in date will be confirmed.

Pricing subject to change. Residency agreement available upon request.



Heartwood is a non-profit senior living community rooted in the shared vision of its two founding organizations, Cuyuna Regional Medical Center and Presbyterian Homes & Services. Both have a decades-rich history of providing progressive, personal care and promoting all aspects of health and well-being for those they serve.

218-545-8500

500 Heartwood Drive
Crosby, MN 56441

HeartwoodLiving.org

Due to COVID-19 or other future circumstance, some features may be temporarily unavailable or offered in a different way. We anticipate features will become available in original form once it is prudent to do so. Presbyterian Homes & Services (PHS) communities comply with applicable federal civil rights laws and do not discriminate on the basis of race, color, national origin, age, disability or sex.

PresHomes.org

Español (Spanish): Llame al 1-844-558-6125

Hmoob (Hmong): Hu rau 1-844-558-6125

Tagalog (Filipino): Tumawag sa 1-844-558-6125

Professional management by PHS Management, LLC © 2021 Presbyterian Homes and Services
All faiths welcome. Equal housing opportunity.

LIVING OPTIONS

- Terrace senior apartments
- Commons assisted living apartments
- Arbor assisted living memory care residence
- Hallett Cottages assisted living memory care

