



# Highland Ridge

The Village Homes

Townhomes

# Welcome to Highland Ridge

At Highland Ridge, your ideal residence is complemented by an assortment of conveniences and amenities to enrich your life.

Enjoy maintenance-free living and comfortable, convenient floor plans. Regardless of which plan you choose, it's sure to reflect your sense of style as you add your own personal touch.

---

## Included Amenities

- 10 meals per month
- Continental breakfast
- Monthly housekeeping
- Utilities (sewer, water and trash)
- Basic cable television service
- Lawn care and snow removal
- Designated complimentary transportation to shopping, outings and medical appointments
- Social programs and events
- Pastoral care
- Instructor led fitness classes
- Access to Kinze Wellness Center
- Access to Village Square amenities and programs
- Property tax and building insurance
- Townhome and building maintenance
- Priority access to other Presbyterian Homes & Services living and care options based on availability
- Month-to-month residency agreement after 1 year contract
- Smoke-free environment

## Other Conveniences

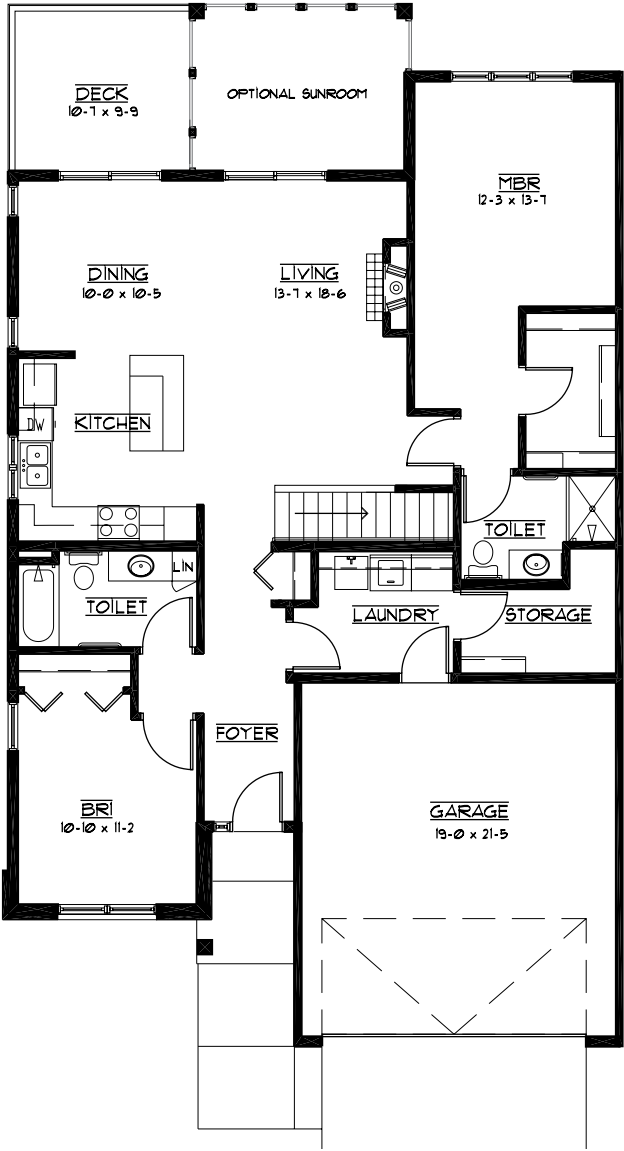
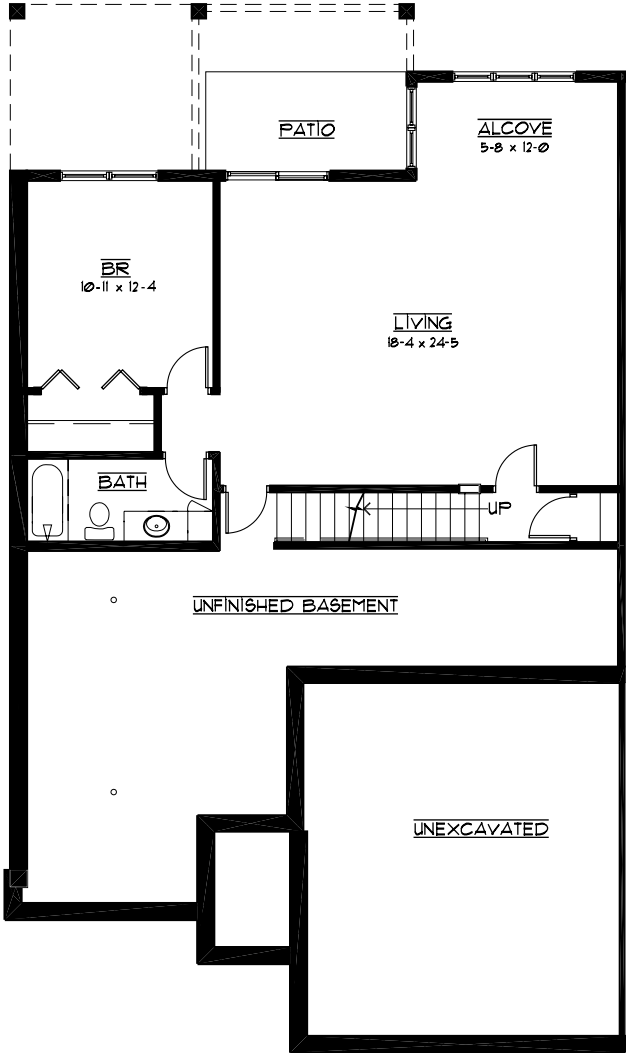
*Additional fees may apply*

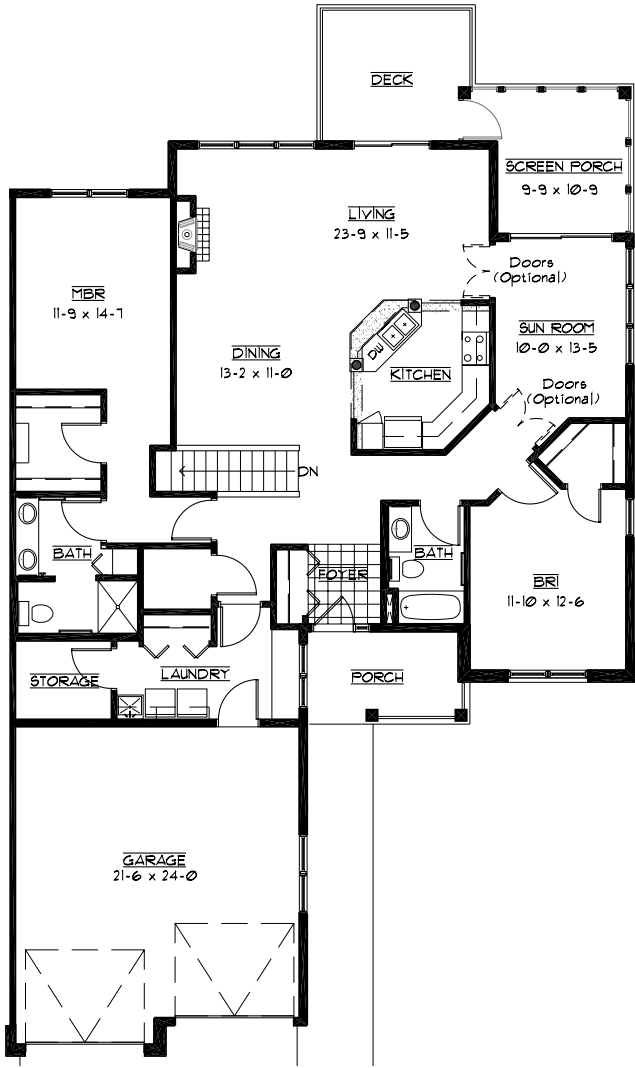
- Restaurant-style dining
- Guest suite
- Guest dining
- Telephone service
- Select personal home care services
- Gas and electric
- Travel credit (specifics apply)
- Transportation for specialty outings



# Sample Floor Plans

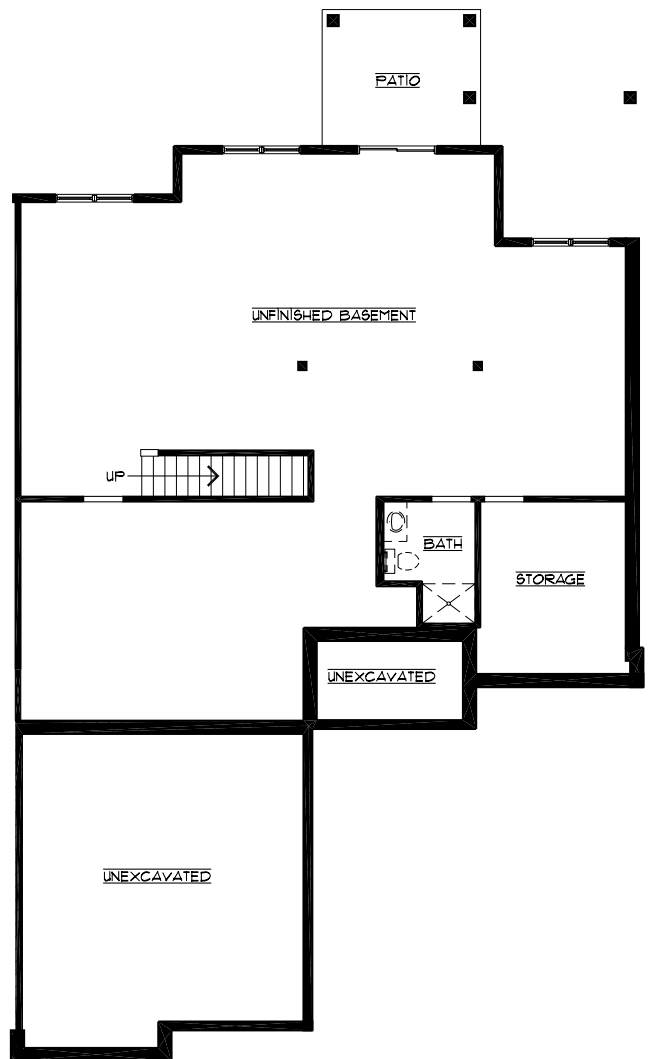
**Geranium**  
Two Bedroom | 1,450 Sq. Ft.





# Hibiscus

Two Bedroom | 1,850 Sq. Ft.



Highland Ridge  
Townhomes  
319-668-3800

*Floor plans, features and amenities are subject to change without notice. Stated dimensions and square footage are approximate. Additional floor plans may be available. Please ask about availability. Some townhomes have finished basements.*

Casual elegance and design combine to make every townhome a gracious retreat. Well-appointed, attached homes with private exterior entrances maintain your high level of independence while providing all the benefits of a community setting without the hassle of household maintenance.

## Distinctive Details

- Single level living
- Bright open floor plans emphasize spacious rooms with nine foot ceilings
- Gas fireplace
- Attached double garage with remote opener
- Fully equipped kitchen
- Oak cabinetry and mill work
- Convenient in-home laundry with full size washer and dryer
- Individually controlled heat and central air conditioning
- Homes may feature unfinished basement, four-season sunroom, deck or patio
- In-floor heat\*

## Monthly Rental Fee

Townhome	Sq. Ft.	Entrance Deposit	Rate
Two Bedroom <i>Unfinished Lower Level</i>	1,450–1,850	\$72,500–\$92,500	\$2,100–\$2,640
Two Bedroom* <i>No Lower Level</i>	1,850	\$83,250	\$2,385
Two Bedroom <i>Finished Lower Level</i>	2,355–2,932	\$94,200–\$115,945	\$3,150–\$3,870

## Deposit

- The entrance deposit essentially reduces the monthly fee and is 90% refundable.
- Please ask about our 100% refundable Rent Only option which only requires a \$5,100 entrance deposit.
- A \$2,000 reservation/damage deposit is required.



Pricing subject to change. Occupancy agreement available upon request.



**319-668-3800**

100 Village View Circle  
Williamsburg, IA 52361

**HighlandRidge.org**

*Due to COVID-19 or other future circumstance, some features may be temporarily unavailable or offered in a different way. We anticipate features will become available in original form once it is prudent to do so. Presbyterian Homes & Services (PHS) communities comply with applicable federal civil rights laws and do not discriminate on the basis of race, color, national origin, age, disability or sex.*

PresHomes.org

Español (Spanish): *Llame al 1-844-558-6125*

Hmoob (Hmong): *Hu rau 1-844-558-6125*

Tagalog (Filipino): *Tumawag sa 1-844-558-6125*

Professional management by PHS Management, LLC © 2021 Presbyterian Homes and Services  
All faiths welcome. Equal housing opportunity.

## Living Options

- Townhomes
- Senior apartments
- Assisted living apartments
- Skilled care center suites
- Care center suites
- Care center memory care suites

 **presbyterian  
homes & services**  
*freedom to live well®*