



The Mayfield

Senior Apartments

Welcome to The Mayfield

At The Mayfield, your ideal residence is complemented by an assortment of conveniences and amenities to enrich your life.

Enjoy maintenance-free living and comfortable, convenient floor plans. Regardless of which plan you choose, it's sure to reflect your sense of style as you add your own personal touch.

Included Amenities

- Utilities include heat, water, sewer, and trash
- Controlled entrance
- Basic cable television service
- Designated complimentary transportation to shopping and outings
- Pastoral care
- Wings® wellness intellectually stimulating programs, spiritual care services, group fitness classes, fitness center, volunteer opportunities
- Month-to-month residency agreement
- Property tax and building insurance
- Apartment and building maintenance
- Lawn care and snow removal
- Priority access to other Presbyterian Homes & Services living and care options based on availability
- Smoke-free community

Other Conveniences

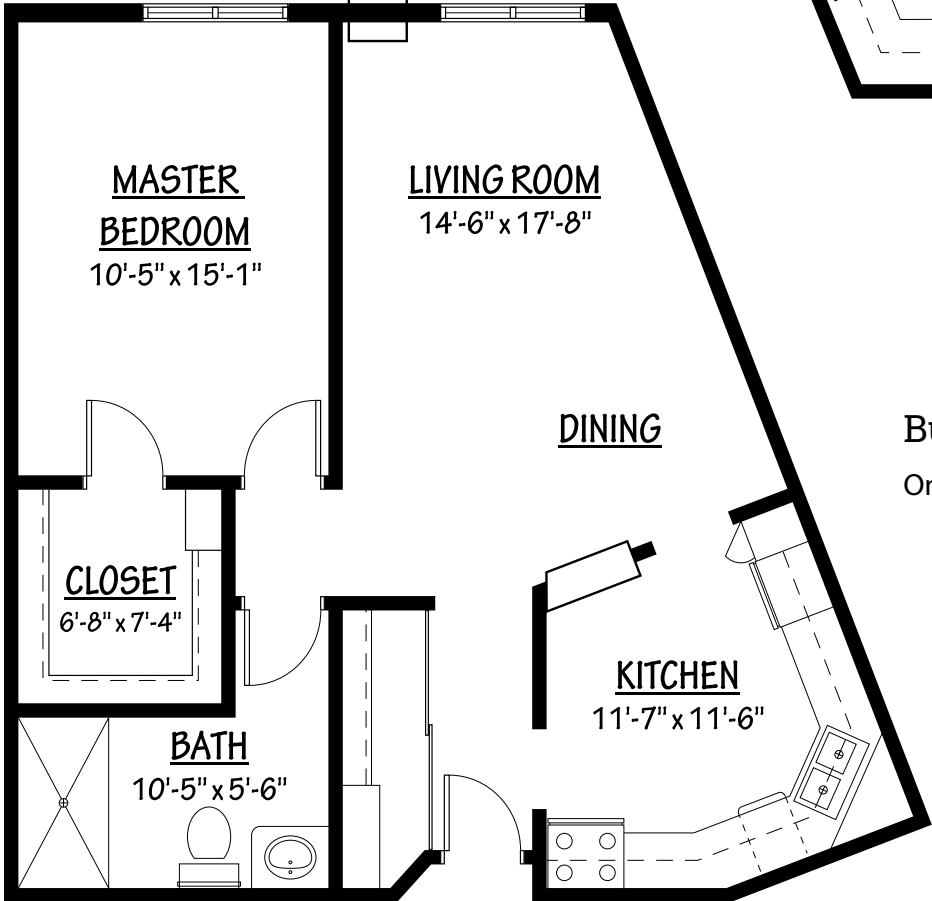
Additional fees may apply

- Electric service
- Telephone service
- Underground heated parking with storage cabinet
- Indoor heated car wash bay
- Transportation for shopping and outings
- Beauty salon/barber shop
- Laundry facilities
- Guest suite
- Home delivered meals, home care and hospice services available through Optage®
- Pets are welcome (guidelines apply)



Sample Floor Plans

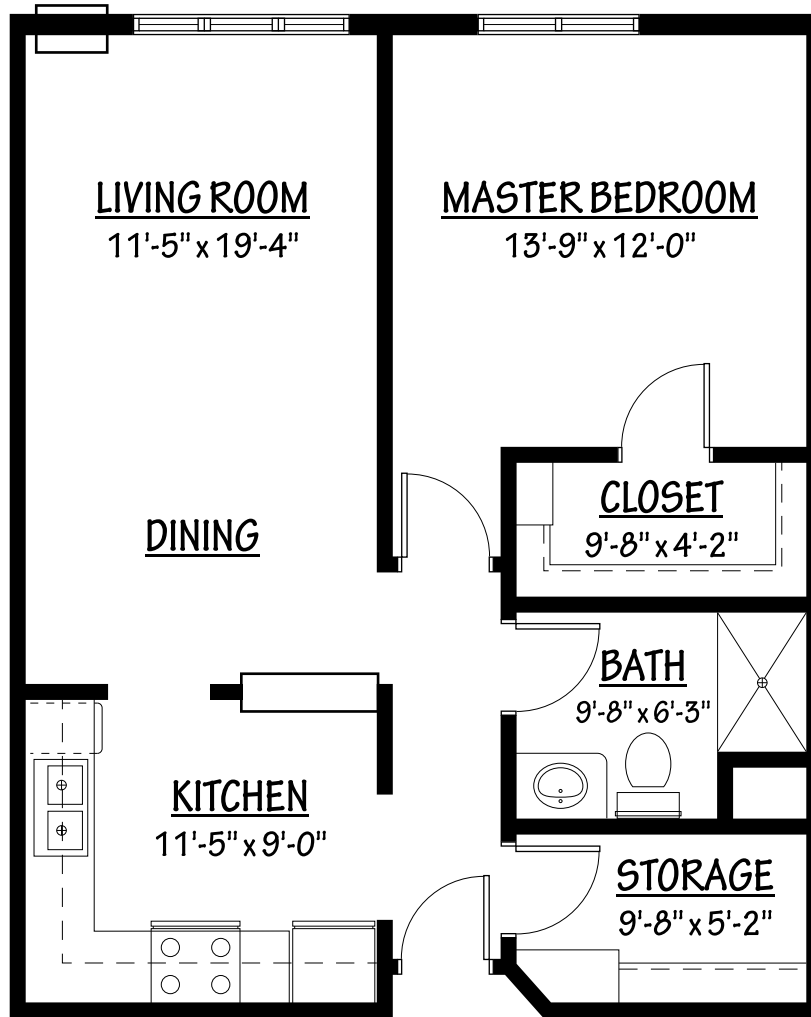
Azalea
One Bedroom | 752 Sq. Ft.



Buttercup
One Bedroom | 755 Sq. Ft.

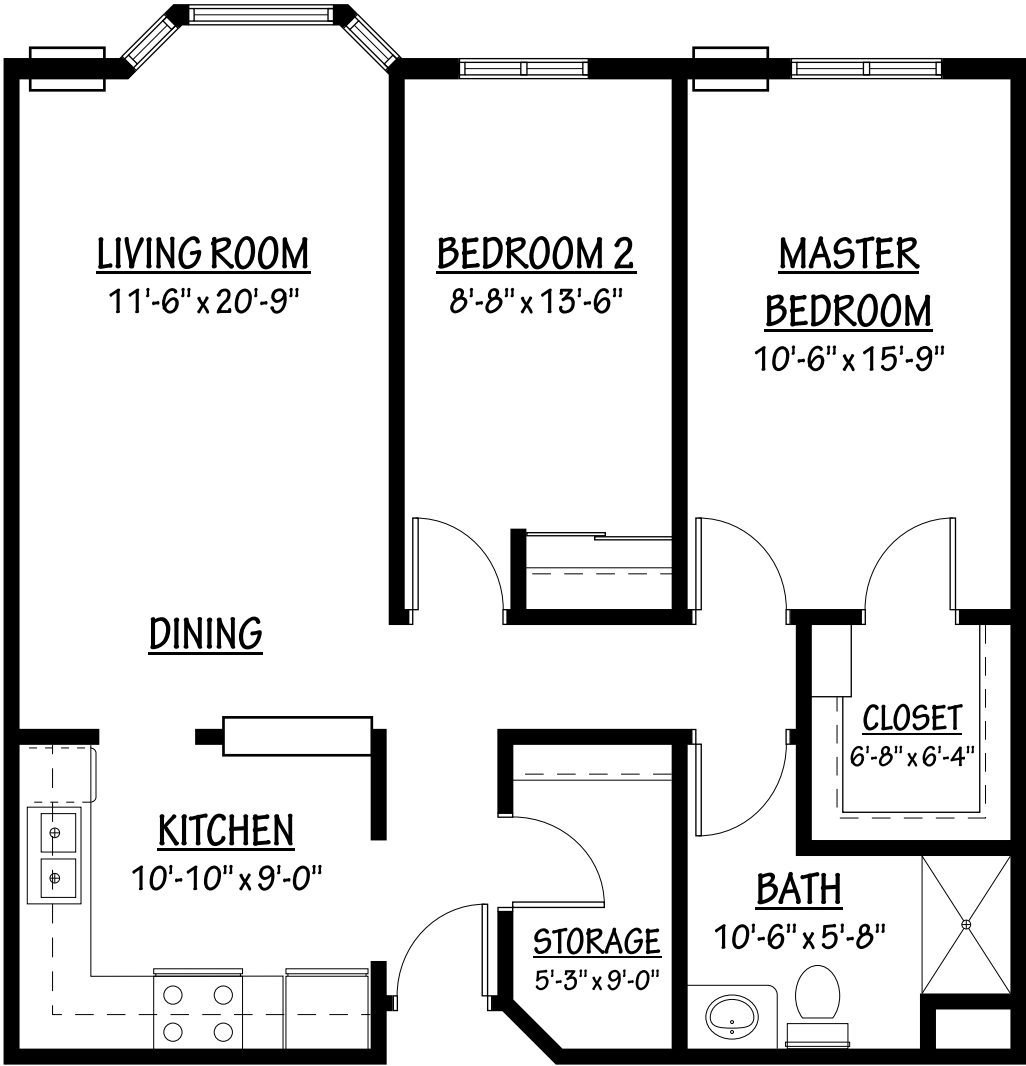
Columbine

One Bedroom | 760 Sq. Ft.



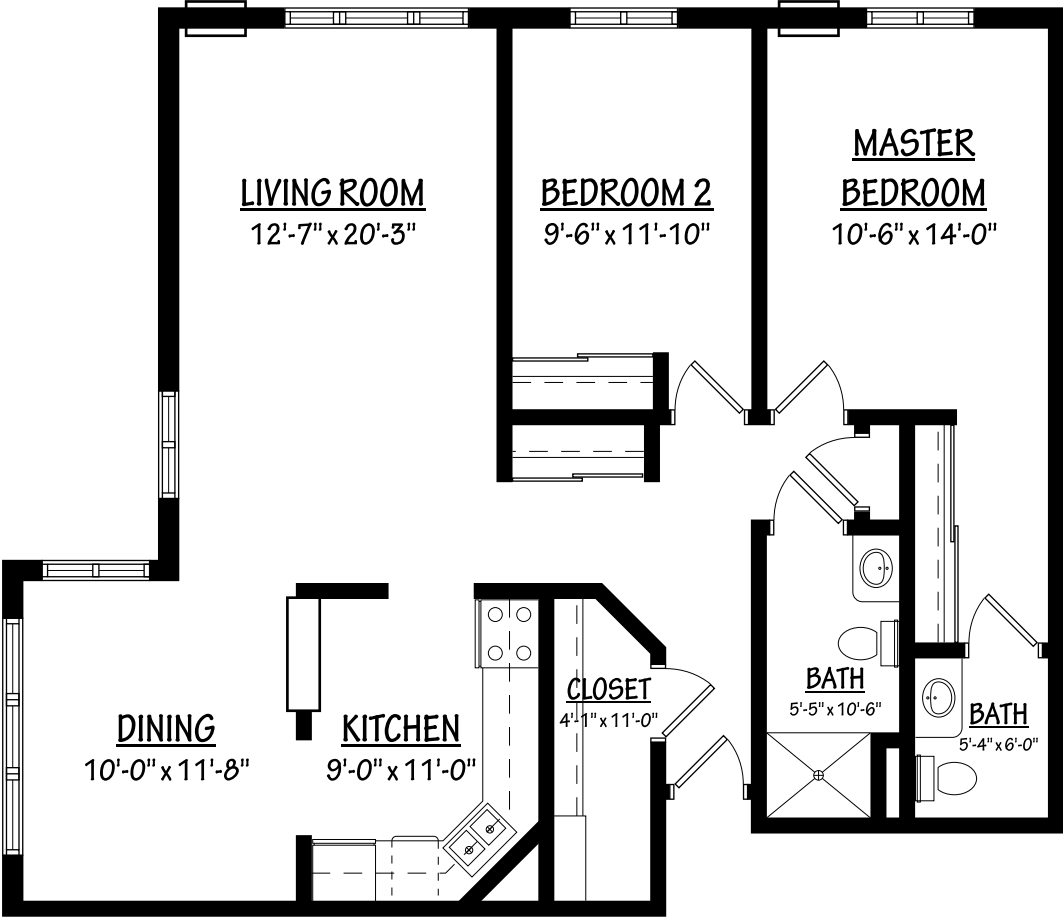
Forget-Me-Not

Two Bedroom | 963 Sq. Ft.



Geranium

Two Bedroom | 1,102 Sq. Ft.



Floor plans, features and amenities are subject to change without notice. Stated dimensions and square footage are approximate. Floor plans do not reflect laundry in the unit. Additional floor plans may be available. Please ask about availability.

Our senior apartments offer maintenance-free living and comfortable floor plans with value and convenience. Nicely appointed common areas are well-suited for group events and casual gatherings. Social, recreational and volunteer opportunities help create a sense of community.

Distinctive Details

- Bright open floor plans emphasize spacious rooms with eight foot ceilings
- Fully equipped kitchen with stove, self-cleaning oven, refrigerator, dishwasher and microwave
- Convenient in-home laundry with washer and dryer
- Blinds on all windows
- Thoughtfully designed bathroom with grab bar and step-in shower with built in seat
- Spacious walk-in closet
- Storage closet in most apartments
- Individually controlled heat and wall unit air conditioning

Monthly Rental Fee

Apartment	Sq. Ft.	Rate
One Bedroom	752–844	\$1,405–\$1,605
Two Bedroom	963–1,102	\$1,790–\$2,020



Pricing subject to change. Residency agreement available upon request.



651-482-1229

2850 Market Place Drive
Little Canada, MN 55117

TheMayfield.org

Due to COVID-19 or other future circumstance, some features may be temporarily unavailable or offered in a different way. We anticipate features will become available in original form once it is prudent to do so. Presbyterian Homes & Services (PHS) communities comply with applicable federal civil rights laws and do not discriminate on the basis of race, color, national origin, age, disability or sex.

PresHomes.org

Español (Spanish): *Llame al 1-844-558-6125*

Hmoob (Hmong): *Hu rau 1-844-558-6125*

Tagalog (Filipino): *Tumawag sa 1-844-558-6125*

Professional management by PHS Management, LLC © 2021 Presbyterian Homes and Services
All faiths welcome. Equal housing opportunity.

9/23 

 **presbyterian
homes & services**
freedom to live well®