



# Norris Square

Terrace II

Senior Apartments

# Welcome to Norris Square

At Norris Square, your ideal residence is complemented by an assortment of conveniences and amenities to enrich your life.

Enjoy maintenance-free living and comfortable, convenient floor plans. Regardless of which plan you choose, it's sure to reflect your sense of style as you add your own personal touch.

---

## Included Amenities

- Utilities (heat, electric, central air conditioning, water, sewer, and trash)
- Premier cable television service
- Telephone service
- Open public Wi-Fi
- Continental breakfast (Monday - Friday)
- Designated complimentary transportation to shopping and outings
- Wings® wellness intellectually stimulating programs, spiritual care services, group fitness classes, fitness center, volunteer opportunities
- Pastoral care
- Controlled entrance
- Month-to-month residency agreement
- Lawn care and snow removal
- Property tax and building insurance
- Apartment and building maintenance
- Priority access to other Presbyterian Homes & Services living and care options based on availability
- Smoke-free environment

## Other Conveniences

*Additional fees may apply*

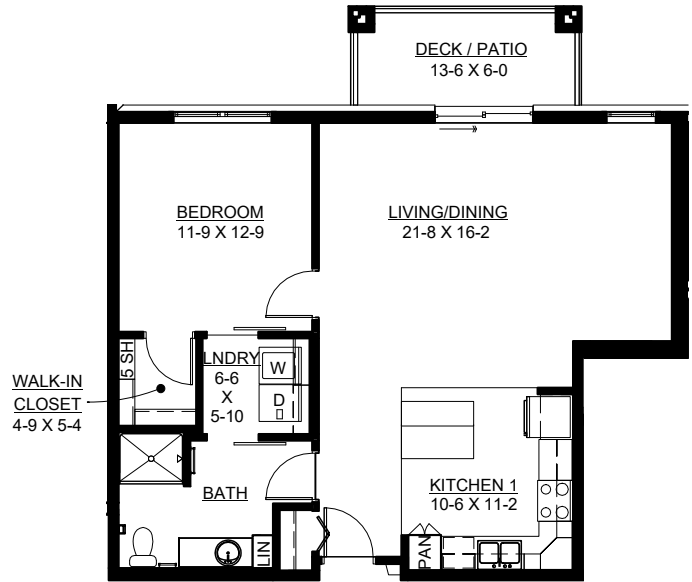
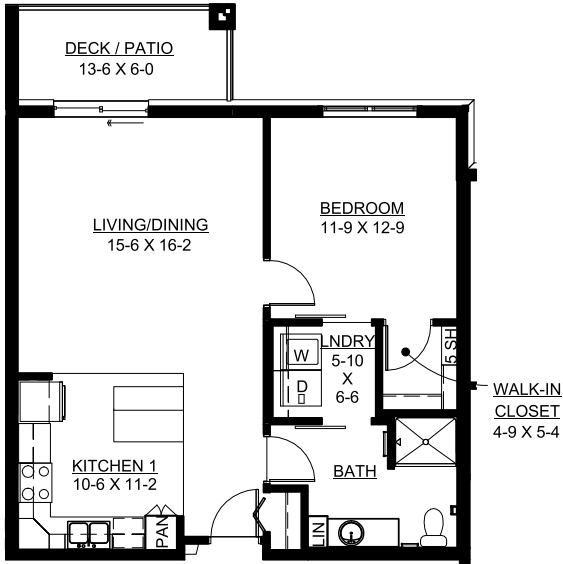
- Underground heated parking
- Storage units
- Restaurant-style dining
- Transportation for shopping and outings
- Housekeeping
- Home care and hospice services available through Optage®
- Handyman
- Internet
- Guest dining
- Guest suite
- Pets are welcome (guidelines apply)
- Outpatient therapy — physical, occupational and speech therapy



# Sample Floor Plans

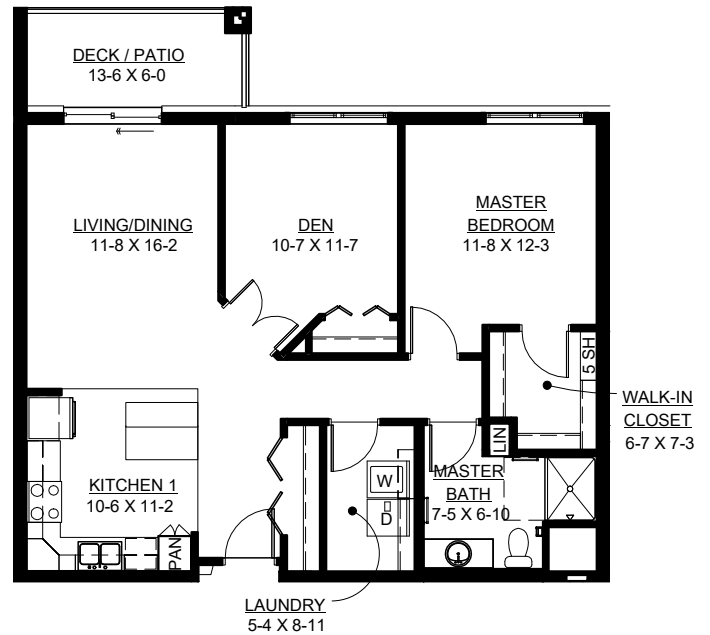
## Bamboo

One Bedroom | 812 Sq. Ft.



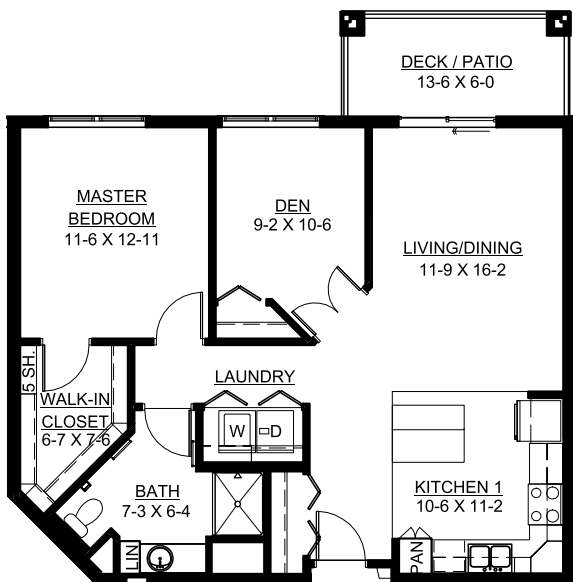
## Bluestem

One Bedroom | 889 Sq. Ft.



## Brome

One Bedroom/Den | 961 Sq. Ft.

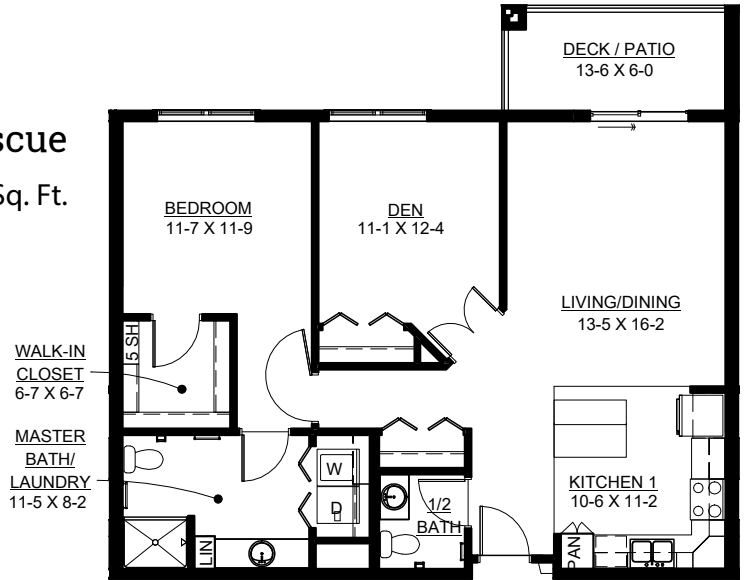


## Chia

One Bedroom/Den | 1,024 Sq. Ft.

## Fescue

One Bedroom/Den | 1,072 Sq. Ft.

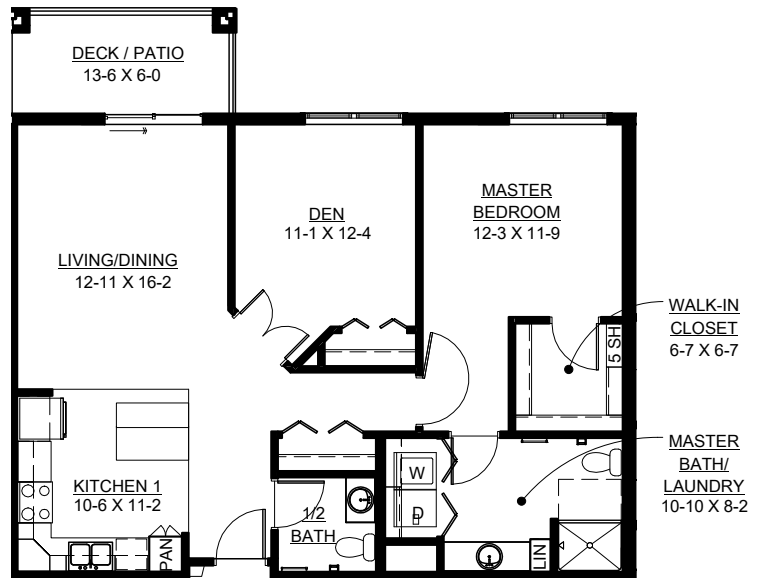


## Flax

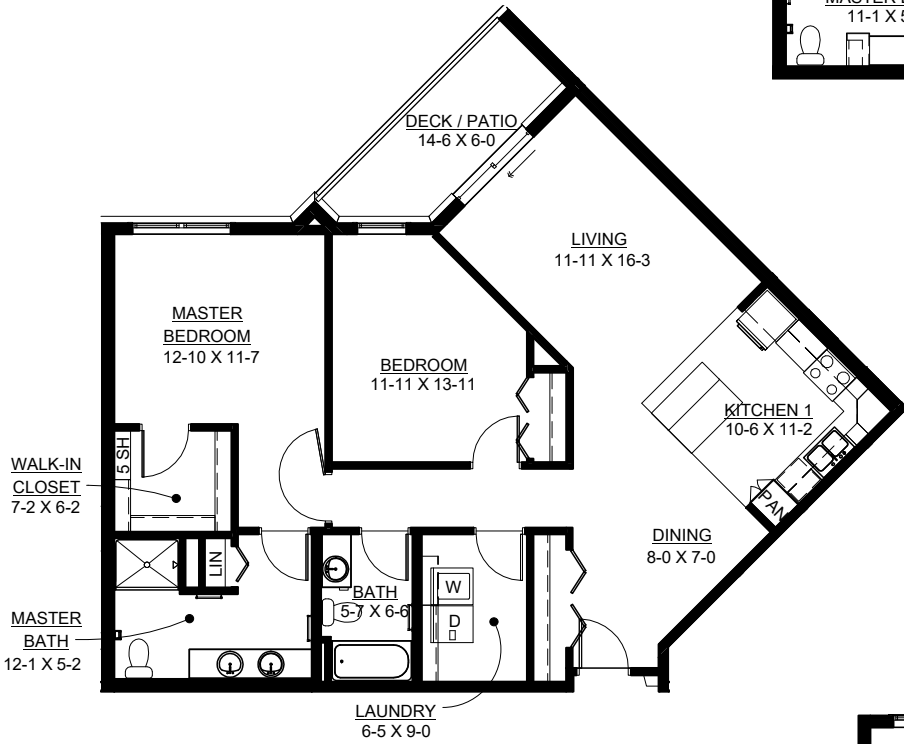
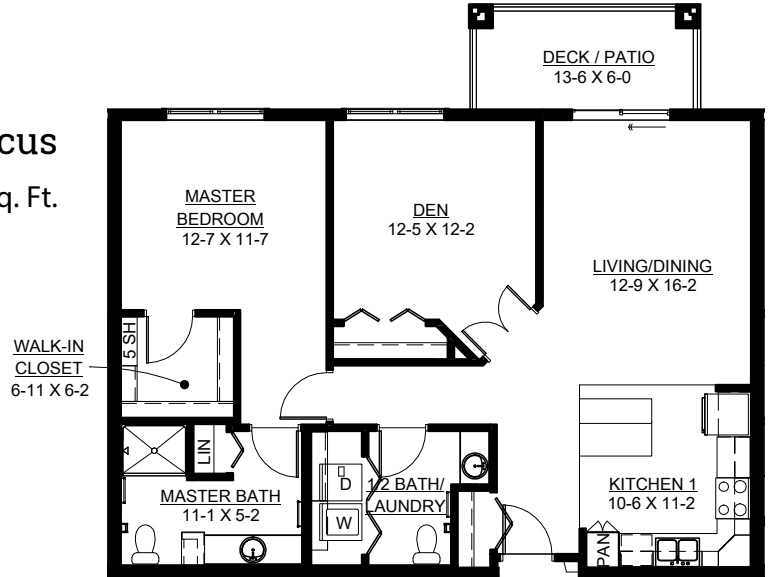
One Bedroom/Sunroom | 1,073 Sq. Ft.

## Goldentop

One Bedroom/Den | 1,076 Sq. Ft.



**Holcus**  
One Bedroom/Den | 1,119 Sq. Ft.



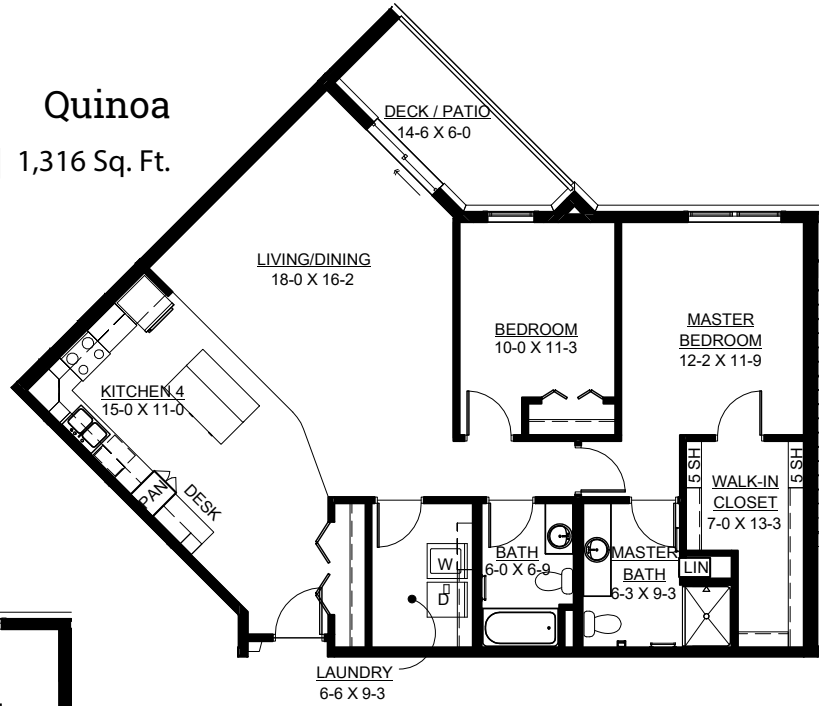
**Muhly**  
Two Bedroom | 1,245 Sq. Ft.

**Plumegrass**  
Two Bedroom | 1,289 Sq. Ft.



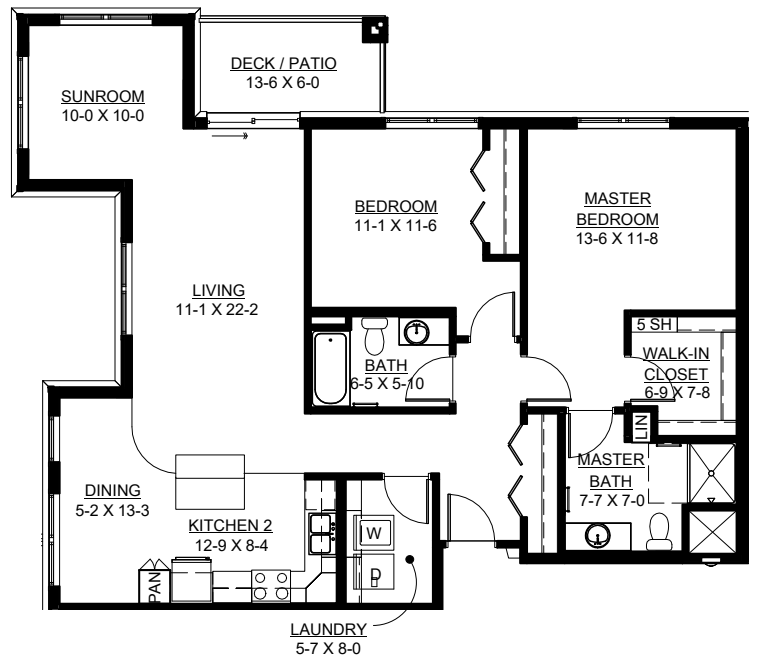
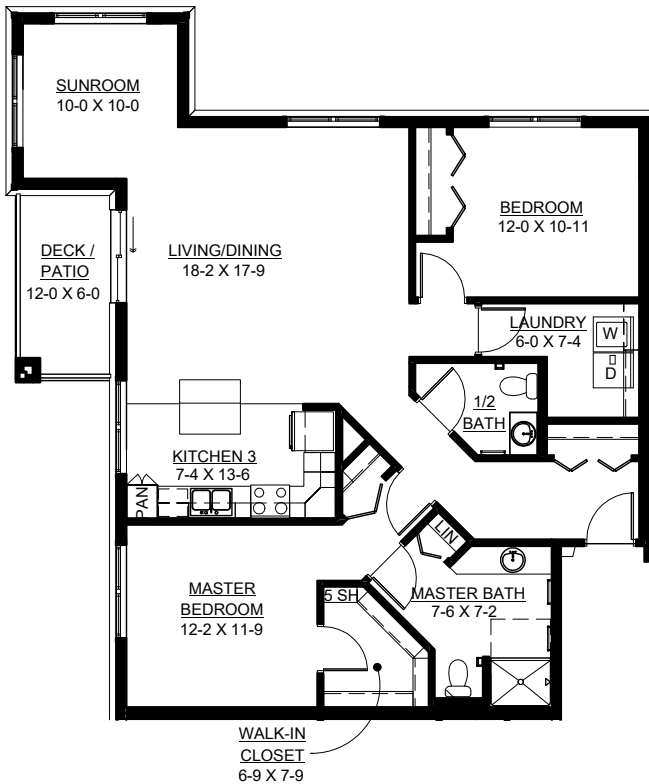
## Quinoa

Two Bedroom | 1,316 Sq. Ft.



## Sesame

Two Bedroom/Sunroom | 1,350 Sq. Ft.



## Vetiver

Two Bedroom/Sunroom | 1,359 Sq. Ft.

Floor plans, features and amenities are subject to change without notice. Stated dimensions and square footage are approximate. Additional floor plans may be available. Please ask about availability.



Our senior apartments offer maintenance-free living and comfortable floor plans with value and convenience. Nicely appointed common areas are well-suited for group events and casual gatherings. Social, recreational and volunteer opportunities help create a sense of community.

## Distinctive Details

- Bright open floor plans emphasize spacious rooms with nine foot ceilings
- Kitchen with granite countertops and wood-look flooring
- Slate appliances (refrigerator, stove/self-cleaning oven, dishwasher, microwave and garbage disposal)
- Maple cabinetry throughout
- Convenient in-home laundry with washer and dryer
- Blinds on all windows
- Individually controlled heat and central air conditioning
- Private deck or patio
- Master bedroom with ceiling fan

## Monthly Rental Fee

Apartment	Sq. Ft.	Rate
One Bedroom	812–1,119	\$2,315–\$3,155
Two Bedroom	1,245–1,359	\$3,415–\$3,645



*Pricing subject to change. Residency agreement available upon request.*





**651-769-6600**

6997 80th Street South  
Cottage Grove, MN 55016

[PHSNorrisSquare.org](http://PHSNorrisSquare.org)

*Due to COVID-19 or other future circumstance, some features may be temporarily unavailable or offered in a different way. We anticipate features will become available in original form once it is prudent to do so. Presbyterian Homes & Services (PHS) communities comply with applicable federal civil rights laws and do not discriminate on the basis of race, color, national origin, age, disability or sex.*

[PresHomes.org](http://PresHomes.org)

Español (Spanish): *Llame al 1-844-558-6125*

Hmoob (Hmong): *Hu rau 1-844-558-6125*

Tagalog (Filipino): *Tumawag sa 1-844-558-6125*

Professional management by PHS Management, LLC © 2021 Presbyterian Homes and Services  
All faiths welcome. Equal housing opportunity.

## Living Options

- Senior apartments
- Assisted living apartments
- Enhanced assisted living apartments
- Assisted living memory care apartments
- Care center suites
- Care center memory care suites

 **presbyterian  
homes & services**  
*freedom to live well®*