



# The Deerfield

The Commons

Assisted Living

# Welcome to The Deerfield

For a setting that offers freedom combined with the comfort of knowing supportive services are available, choose The Commons assisted living.

Shape your daily life as you desire with the support of Liberty Personally Designed Living™, an innovative approach to personal care and assistance. Nicely appointed common areas are well-suited for group or casual gatherings, while social and recreational opportunities create a sense of community.

---

## Included Amenities

- Choice of two meals daily served restaurant-style
- Flexible dining hours
- Weekly light housekeeping and linen change
- Escorts to meals and activities for first 5 days
- Laundry facilities
- Urgent call system
- 24 hour on-site Resident Assistant staffing
- Pastoral care
- Wings® wellness intellectually stimulating programs, spiritual care services, group fitness classes, fitness center, volunteer opportunities
- Controlled entrance
- Designated complimentary transportation to shopping and outings
- Utilities (heat, electric, central air conditioning, water, sewer, and trash)
- Open public Wi-Fi
- Basic cable television service
- Apartment and building maintenance
- Lawn care and snow removal
- Monitored smoke detector
- Priority access to other Presbyterian Homes & Services living and care options based on availability
- Smoke-free community



## Other Conveniences

*Additional fees may apply*

- Telephone service
- Assistance with arranging transportation to medical and social service appointments
- Assistance with accessing community resources and social services
- Access to designated Physician or Nurse Practitioner for on-site services
- Laundry service, \$15 per load
- Additional housekeeping, \$10
- Handyman
- Underground heated parking and car wash bay
- Third meal option
- Guest dining
- Guest suite
- Second occupant, \$800 plus personal care
- Pets are welcome (guidelines apply)
- On-site outpatient therapy — physical, occupational and speech therapy

## Distinctive Details

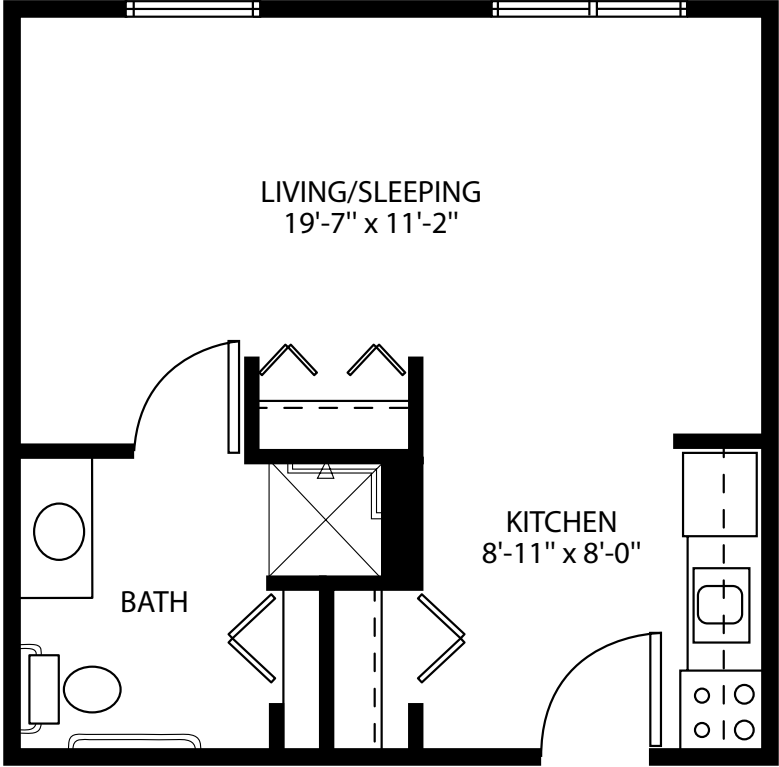
- Kitchen with refrigerator and stove
- Updated cabinetry throughout
- Blinds on all windows
- Individually controlled heat and central air conditioning
- Bathroom with roll-in shower and grab bar

# Sample Floor Plans

---

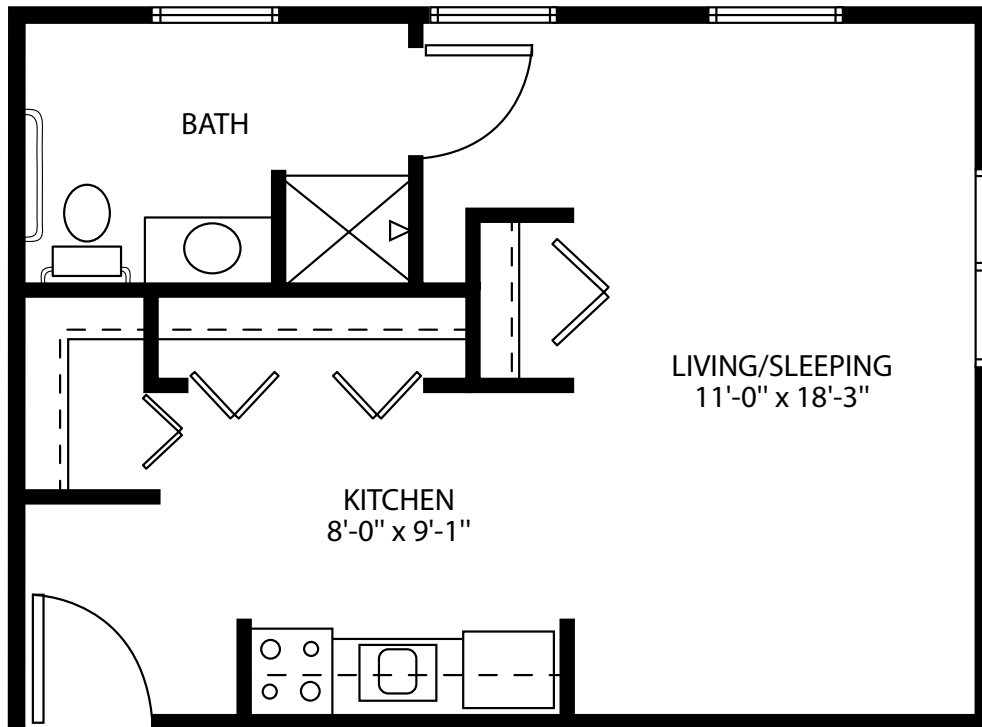
## Studio

415 Sq. Ft.



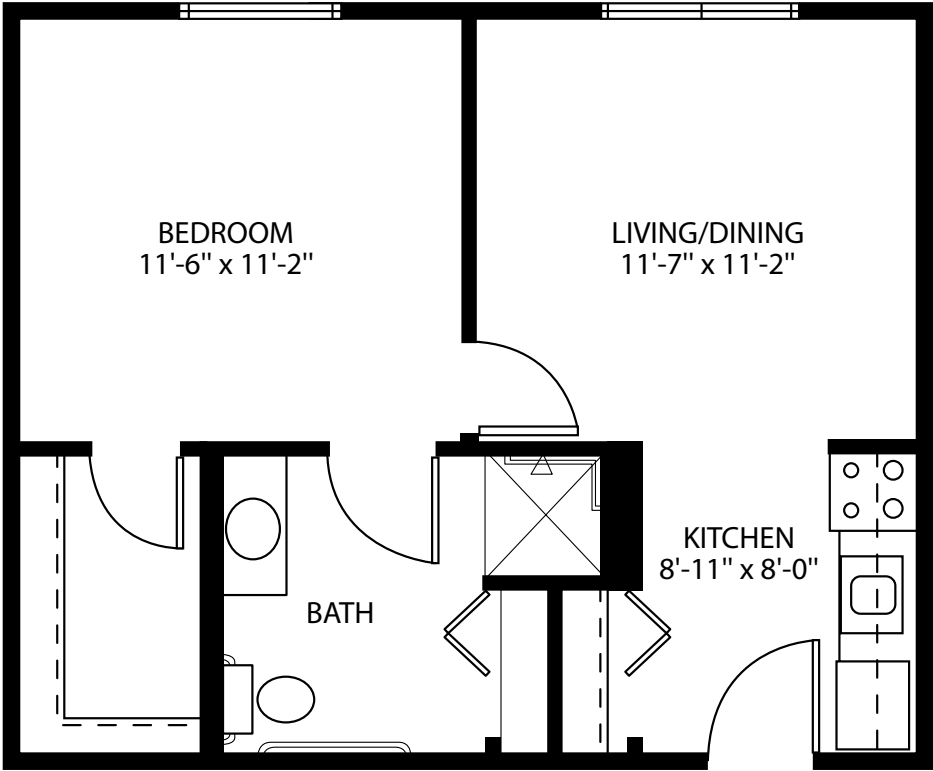
# Deluxe Studio

492 Sq. Ft.



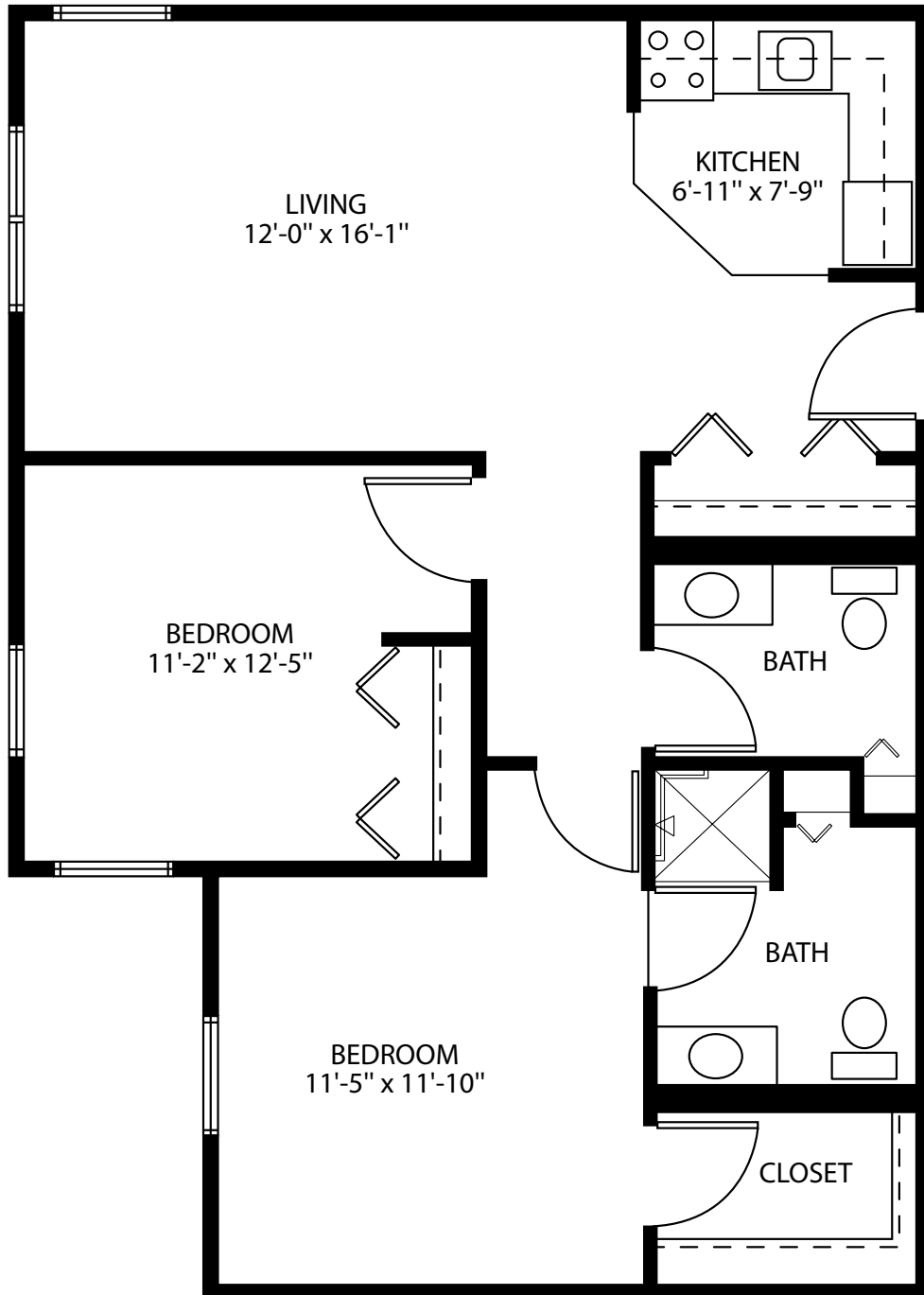
# One Bedroom

496 Sq. Ft.



## Two Bedroom

865 Sq. Ft.



*Floor plans, features and amenities are subject to change without notice. Stated dimensions and square footage are approximate. Additional floor plans may be available. Please ask about availability.*

At The Deerfield, we know each individual is just that—an individual. And our services reflect that philosophy. Select from a broad range of options depending on your personal preferences. It's all based on the principle of choice.  
**And the choice is yours.**

### Monthly Personal Care Fee Ranges\*

Points from Assessment	Monthly Fee
0–9	\$420 (required)
10–101	\$840–\$2,100
102–239	\$2,520–\$4,200
240–354	\$4,410–\$5,250
355–492	\$5,460–\$6,510

*\*The care fee ranges above are for estimating purposes only.*

### Included in Your Personal Care Fees:

- Initial and ongoing nursing assessments
- Scheduled nursing hours and on-call nursing available for staff consultation
- Nurse liaison with health care professionals
- Nurse scheduling of lab draws
- Nurse maintaining clinical record information

## Monthly Rental Fee

Apartment	Sq. Ft.	Rate
Studio	415	\$3,150
Deluxe Studio	492	\$3,250
One Bedroom	496	\$3,675
Two Bedroom	865	\$4,365

## Assisted Living Service Fees

In addition to the monthly rental fee, a monthly personal care fee for assisted living services is required based on the amount of care provided. The following steps help to assess your care needs and guide you through the residency process:

**Step 1: Reserve an apartment at The Deerfield.** We will help you through the reservation process and provide you with essential information in preparation for the following steps.

**Step 2: Schedule an assisted living care assessment appointment.** A nurse will meet with you to complete an initial assessment and help create a personalized care plan. The assessment will include a review of your individualized needs and a recommendation of services that could be provided to meet those needs. Each service is assigned a point value and the assessment will give you an estimated total number of points.\* To view the care assessment, scan the QR code or visit [DeerfieldPHS.org](http://DeerfieldPHS.org) and click on "Resident Documents."



**Step 3: Schedule a residency agreement appointment.** We will review the residency agreement, payment information and other resources with you. Once the residency agreement process is complete, your move-in date will be confirmed.

*Pricing subject to change. Residency agreement available upon request.*



**715-243-3900**

1127 West Eighth Street  
New Richmond, WI 54017

**DeerfieldPHS.org**

## Living Options

- Senior apartments
- Assisted living apartments
- Memory care residence
- Care center
- Care center memory care

*Due to COVID-19 or other future circumstance, some features may be temporarily unavailable or offered in a different way. We anticipate features will become available in original form once it is prudent to do so. Presbyterian Homes & Services (PHS) communities comply with applicable federal civil rights laws and do not discriminate on the basis of race, color, national origin, age, disability or sex.*

PresHomes.org

Español (Spanish): *Llame al 1-844-558-6125*

Hmoob (Hmong): *Hu rau 1-844-558-6125*

Tagalog (Filipino): *Tumawag sa 1-844-558-6125*

Professional management by PHS Management, LLC © 2021 Presbyterian Homes and Services  
All faiths welcome. Equal housing opportunity.

9/23 

 **presbyterian  
homes & services**  
*freedom to live well®*