



Timber Hills

The Commons

Assisted Living

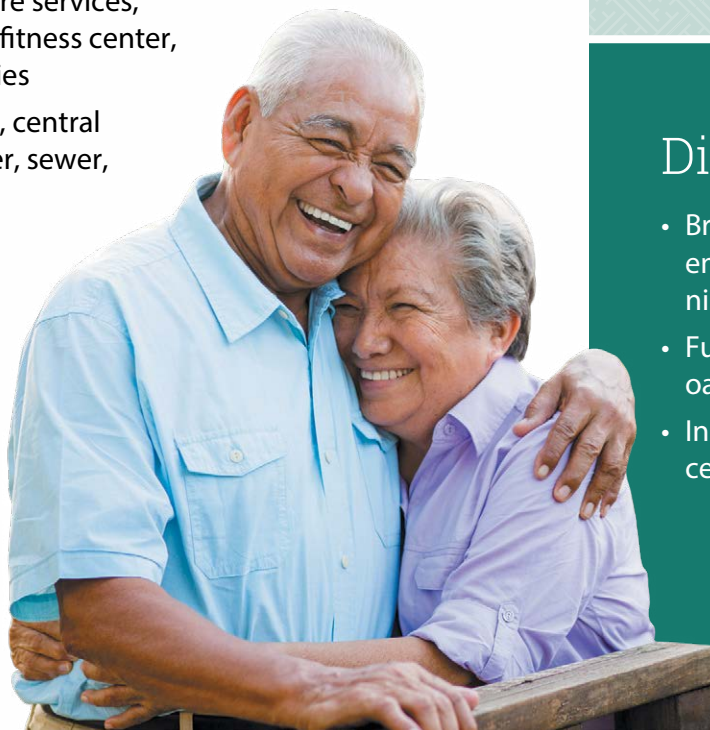
Welcome to Timber Hills

For a setting that offers freedom combined with the comfort of knowing supportive services are available, choose The Commons assisted living.

Shape your daily life as you desire with the support of Liberty Personally Designed Living™, an innovative approach to personal care and assistance. Nicely appointed common areas are well-suited for group or casual gatherings, while social and recreational opportunities create a sense of community.

Included Amenities

- Escorts to meals and activities for first 5 days
- Choice of three meals daily
- Continental breakfast, lunch and dinner
- Flexible dining hours
- Weekly light housekeeping and linen change
- Urgent call system
- 24 hour on-site Resident Assistant staffing
- Laundry facilities
- Designated complimentary transportation to shopping and outings
- Pastoral care
- Wings® wellness intellectually stimulating programs, spiritual care services, group fitness classes, fitness center, volunteer opportunities
- Utilities (heat, electric, central air conditioning, water, sewer, and trash)
- Basic cable television service
- Telephone service
- Priority access to other Presbyterian Homes & Services living and care options based on availability



Other Conveniences

Additional fees may apply

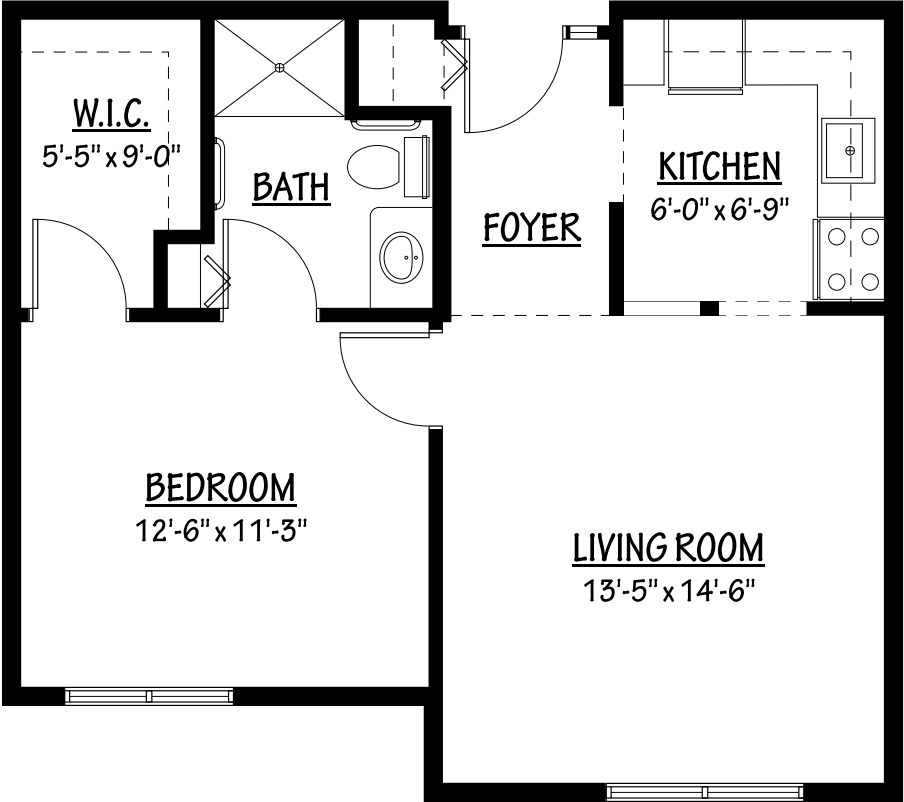
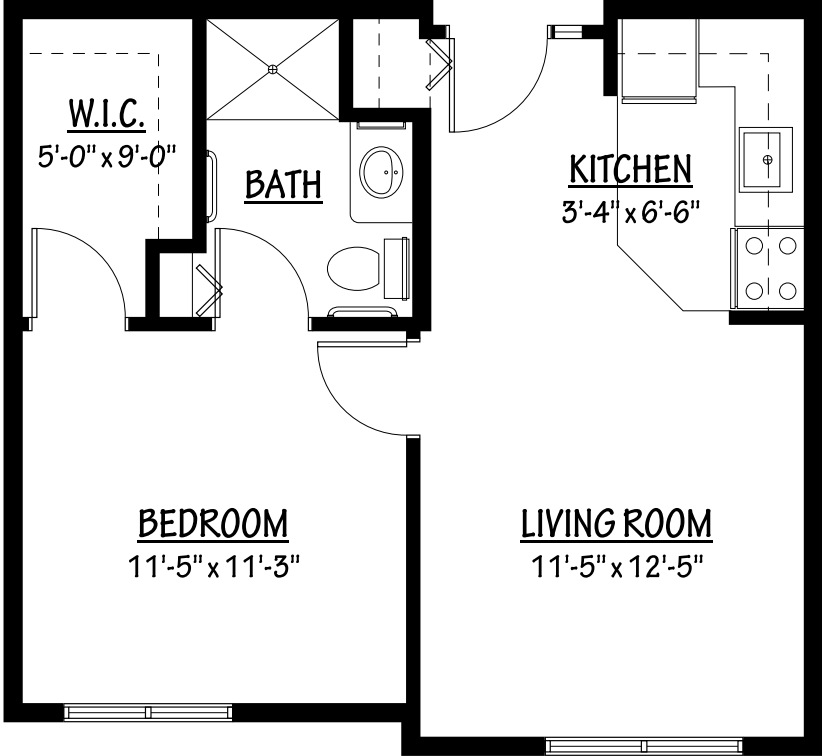
- Specialized nursing and therapy visits (physical, speech and occupational)
- Health and wellness clinic
- Transportation for shopping and outings
- Assistance with arranging transportation to medical and social service appointments
- Assistance with accessing community resources and social services
- Access to designated Physician or Nurse Practitioner for on-site services
- Additional home care and hospice services available through Optage®
- Pharmacy delivery (resident-specific)
- Laundry service
- Second occupant, \$800 plus personal care
- Guest dining
- Room service
- Guest suite
- Beauty and barber service
- Outpatient therapy — physical, occupational and speech therapy

Distinctive Details

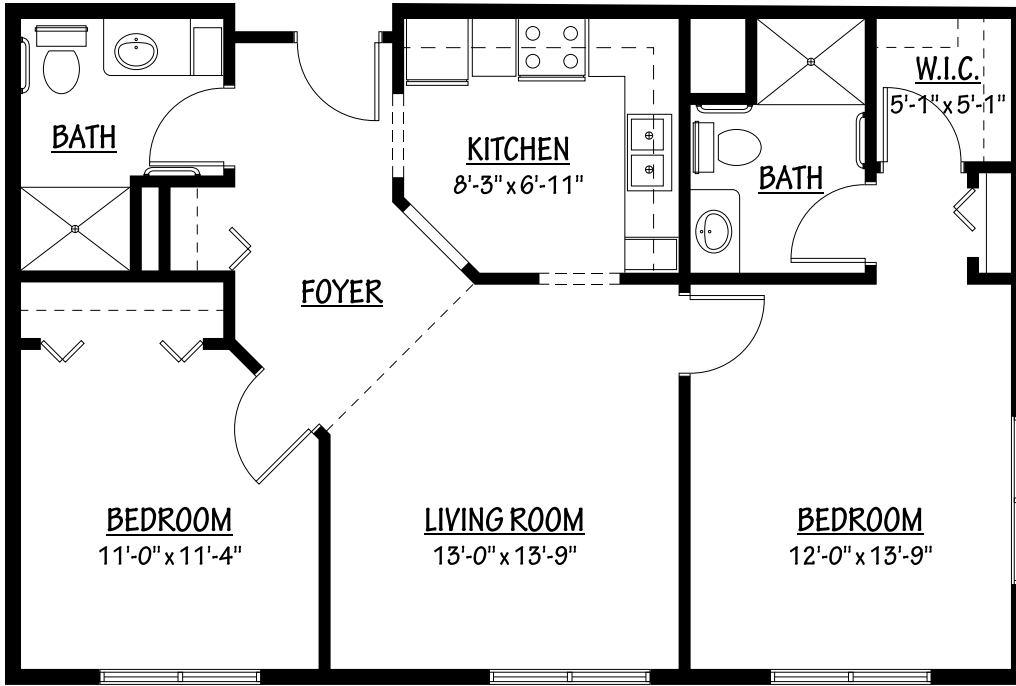
- Bright open floor plans emphasize spacious rooms with nine foot ceilings
- Fully equipped kitchens with oak cabinetry
- Individually controlled heat and central air conditioning

Sample Floor Plans

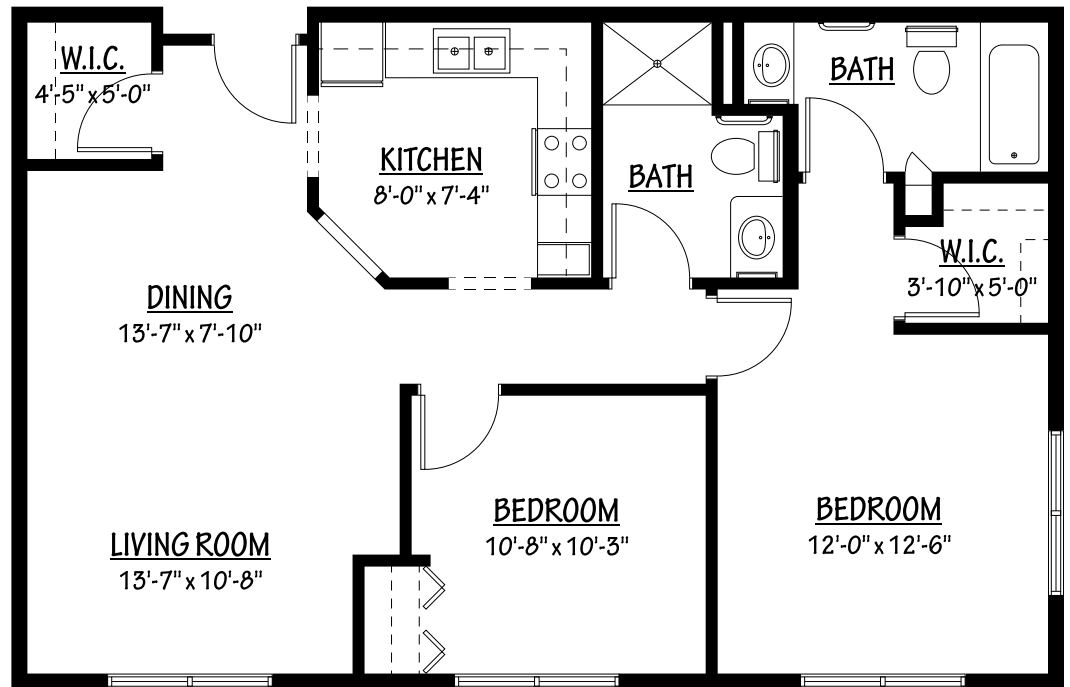
The Arrowhead
One Bedroom | 523 Sq. Ft.



The Caribou
One Bedroom | 621 Sq. Ft.



The Gunflint
Two Bedroom
908 Sq. Ft.



The North Shore
Two Bedroom
945 Sq. Ft.



Timber Hills
Assisted Living
651-552-2800

Floor plans, features and amenities are subject to change without notice. Stated dimensions and square footage are approximate. Additional floor plans may be available. Please ask about availability.

At Timber Hills, we know each individual is just that—an individual. And our services reflect that philosophy. Select from a broad range of options depending on your personal preferences. It's all based on the principle of choice.
And the choice is yours.

Monthly Personal Care Fee Ranges*

Points from Assessment	Monthly Fee
0–9	\$460 (required)
10–101	\$920–\$2,300
102–239	\$2,760–\$4,560
240–354	\$4,770–\$5,610
355–492	\$5,820–\$6,870

**The care fee ranges above are for estimating purposes only.*

Included in Your Personal Care Fees:

- Initial and ongoing nursing assessments
- Scheduled nursing hours and on-call nursing available for staff consultation
- Nurse liaison with health care professionals
- Nurse scheduling of lab draws
- Nurse maintaining clinical record information
- Daily reassurance check

Monthly Rental Fee

Apartment	Sq. Ft.	Rate
Suite	270	\$3,515
One Bedroom	523–775	\$4,175–\$4,705
Two Bedroom	908–1,226	\$5,100–\$5,755

Assisted Living Service Fees

In addition to the monthly rental fee, a monthly personal care fee for assisted living services is required based on the amount of care provided. The following steps help to assess your care needs and guide you through the residency process:

Step 1: Reserve an apartment at Timber Hills. We will help you through the reservation process and provide you with essential information in preparation for the following steps.

Step 2: Schedule an assisted living care assessment appointment. A nurse will meet with you to complete an initial assessment and help create a personalized care plan. The assessment will include a review of your individualized needs and a recommendation of services that could be provided to meet those needs. Each service is assigned a point value and the assessment will give you an estimated total number of points.* To view the care assessment, scan the QR code or visit TimberHillsPHS.org and click on "Resident Documents."



Step 3: Schedule a residency agreement appointment. We will review the residency agreement, payment information and other resources with you. Once the residency agreement process is complete, your move-in date will be confirmed.

Pricing subject to change. Residency agreement available upon request.



651-552-2800

6307 Burnham Circle
Inver Grove Heights, MN 55076

TimberHillsPHS.org

Living Options

- Townhomes
- Senior apartments
- Assisted living apartments
- Assisted living memory care residence

Due to COVID-19 or other future circumstance, some features may be temporarily unavailable or offered in a different way. We anticipate features will become available in original form once it is prudent to do so. Presbyterian Homes & Services (PHS) communities comply with applicable federal civil rights laws and do not discriminate on the basis of race, color, national origin, age, disability or sex.

PresHomes.org

Español (Spanish): Llame al 1-844-558-6125

Hmoob (Hmong): Hu rau 1-844-558-6125

Tagalog (Filipino): Tumawag sa 1-844-558-6125

Professional management by PHS Management, LLC © 2021 Presbyterian Homes and Services
All faiths welcome. Equal housing opportunity.

9/23 

 **presbyterian
homes & services**
freedom to live well®