



The **Village Homes**



One of a kind



Townhomes



A Lifestyle to Love

Boutwells Landing is a vibrant community with a host of services and amenities to enrich your life. Enjoy maintenance-free living and comfortable, convenient floor plans. Regardless of which plan you choose, it's sure to reflect your sense of style as you add your own personal touch.

DISTINCTIVE DETAILS

- One level living, some with lower level walkout or lookout (Side-by-side or detached homes)
- Bright, open floor plans emphasize spacious rooms with nine foot or vaulted ceilings
- Central air conditioning
- Gas fireplace
- Telephone & cable outlets in all bedrooms, living room and kitchen
- Convenient in-home laundry with full size washer and dryer
- Attached garage with remote opener
- Fully-equipped kitchen with raised panel oak cabinetry, Formica countertops, refrigerator, microwave, stove/self-cleaning oven, dishwasher and garbage disposal
- Bath with cultured marble vanity, tub & shower and grab bar
- Walk-in storage
- Four-season or screen porch in select models
- Private patio and/or deck

INCLUDED AMENITIES

- Telephone service
- Basic cable television service
- Utilities (water, sewer, and trash)
- Continental breakfast six days/week
- Monthly dining credit
- Monthly light housekeeping
- Wings® wellness intellectually stimulating programs, spiritual care services, group fitness classes, fitness center with pool, volunteer opportunities
- Professional on-site staff
- Pastoral care
- Designated complimentary transportation to shopping and outings
- Health and wellness clinic
- Access to Town Center amenities and programs
- Campus information channel
- Month-to-month residency agreement
- Property tax and building insurance
- Interior and exterior home maintenance
- Lawn care and snow removal
- Priority access to other Presbyterian Homes & Services living and care options based on availability
- Smoke-free community

OTHER CONVENIENCES (additional fees may apply)

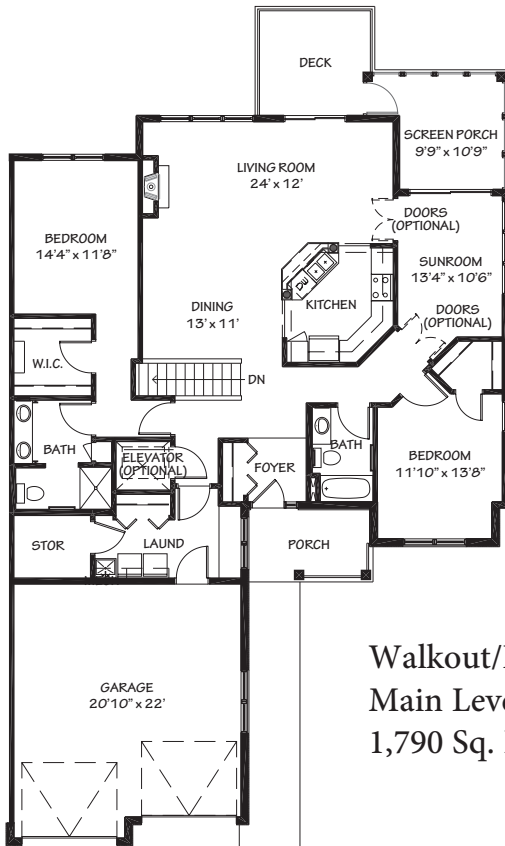
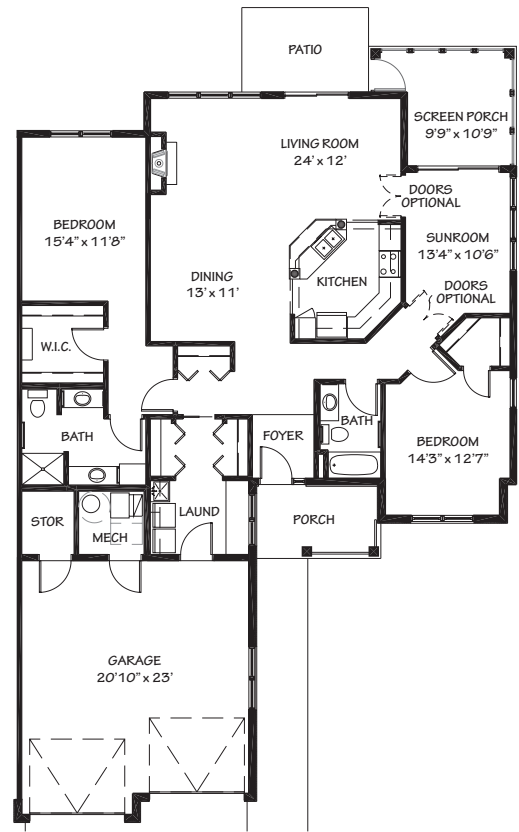
- Additional restaurant-style dining
- Room service and restaurant carry-out service
- Additional housekeeping
- Transportation for shopping and outings
- Additional cable channels
- Caller ID, call waiting and voicemail
- Certified personal trainers
- Home care and hospice services available through Optage®
- Guest suites
- On-site educational programs
- Pets are welcome (guidelines apply)



Sample Floor Plans

Hamilton

Single Level
1,790 Sq. Ft.



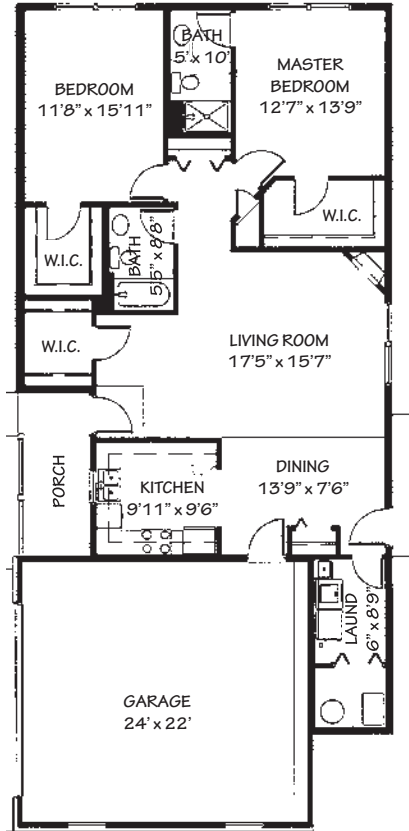
Walkout/Lookout
Main Level
1,790 Sq. Ft.



Walkout/Lookout
Lower Level
1,400 Sq. Ft. Finished

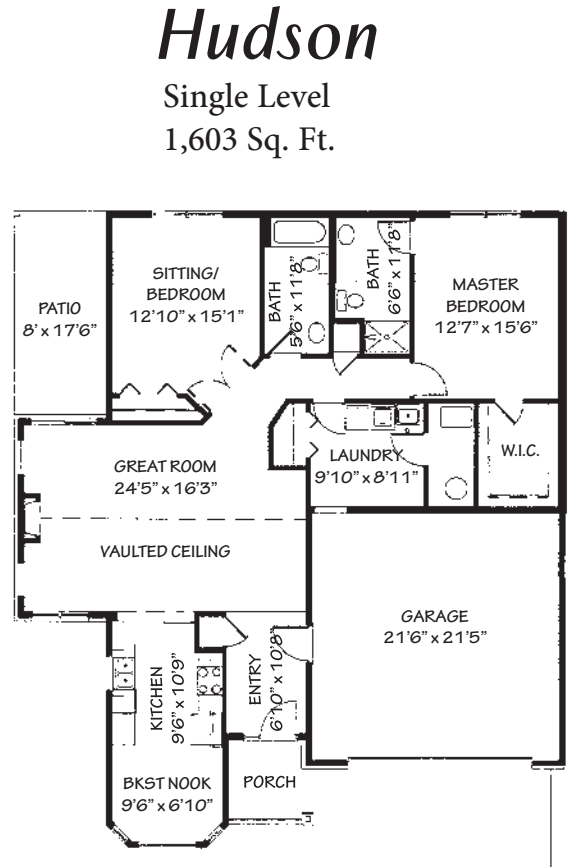
Floor plans, features and amenities are subject to change without notice. Stated dimensions and square footage are approximate. Most homes available with finished lower level walkout/lookout. Additional floor plans available.


BOUTWELLS LANDING
651.275.5000
The Village Homes



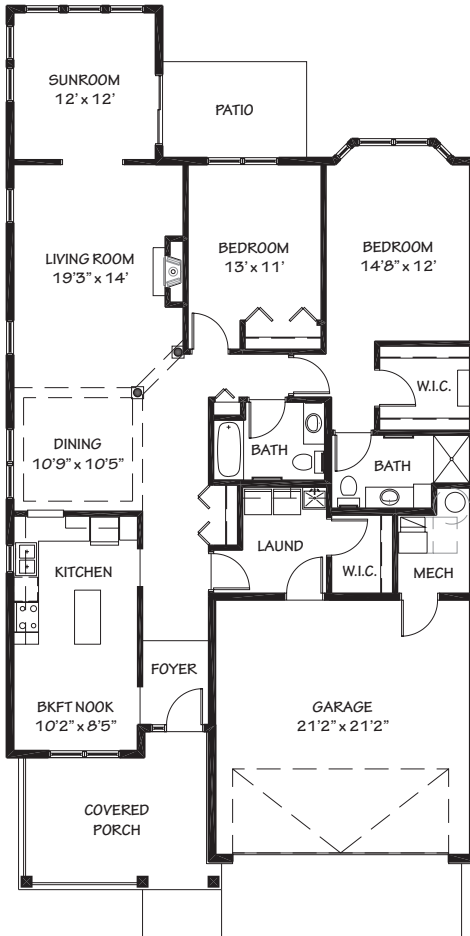
Bayport

Single Level
1,469 Sq. Ft.



Hudson

Single Level
1,603 Sq. Ft.



Wheeler

Single Level
1,765 Sq. Ft.

MONTHLY FEES

<i>Style</i>	<i>Square Feet</i>	<i>Entrance Deposit</i>	<i>Monthly Fee</i>
1 Bedroom	1,158	\$74,900	\$1,810
2 Bedroom	1,469 – 1,682	\$99,500 – \$112,700	\$2,445 – \$2,790
2 Bedroom Plus	1,753 – 2,475	\$131,100 – \$211,400	\$3,145 – \$5,035
3 Bedroom Plus	2,161 – 4,703	\$133,600 – \$244,200	\$2,970 – \$5,100

DEPOSITS

The entrance deposit essentially reduces the monthly fee and is 100% refundable. Ask about our “Monthly Fee Without Entrance Deposit” option.

*Pricing subject to change.
Residency agreement available upon request.*

Boutwells Landing is the premier standard for gracious senior living in the Midwest. With distinctive architecture and over 100 naturally beautiful acres, Boutwells Landing is truly a one-of-a-kind community.



LIVING & CARE OPTIONS

- Townhomes
- Row-style homes
- Senior apartments
- Assisted living apartments
- Assisted living memory care
- Transitional care
- Care center
- Care center memory care
- Adult and child day center

At Boutwells Landing, your home encompasses more than your individual residence and extends well beyond your front door.

COMMUNITY ATTRACTIONS

- Chapel
- Auditorium/banquet center
- The Market
- Boom Site Café
- Steamboat Lounge
- Library
- Gaming area
- Bank
- Beauty salon and barber shop
- Manicure and pedicure salon
- Medical, dental and chiropractic clinic
- Massage therapy suite
- Wings® Wellness Center
- Lap and therapy pools
- Technology learning center
- Movie theatre
- Observatory
- Located near historic Stillwater, Minnesota

Presbyterian Homes & Services (PHS) communities comply with applicable federal civil rights laws and do not discriminate on the basis of race, color, national origin, age, disability or sex. www.preshomes.org

Español (Spanish): Llame al 1-844-558-6125

Hmoob (Hmong): Hu rau 1-844-558-6125

Tagalog (Tagalog - Filipino): Tumawag sa 1-844-558-6125



*We warmly invite
you to call or visit.*

A Senior Living Community in the St. Croix Valley

BOUTWELLS LANDING IS A SHARED MISSION OF LAKEVIEW HOSPITAL,
CROIXDALE, AND PRESBYTERIAN HOMES & SERVICES.

Professional management by PHS Management, LLC
©2012 Presbyterian Homes and Services.

5600 Norwich Parkway
Oak Park Heights, MN 55082
www.boutwells.org 651.275.5000

Equal housing opportunity.