



# GracePointe Crossing

The Commons

Assisted Living

# Welcome to GracePointe Crossing

For a setting that offers freedom combined with the comfort of knowing supportive services are available, choose The Commons assisted living.

Shape your daily life as you desire with the support of Liberty Personally Designed Living™, an innovative approach to personal care and assistance. Nicely appointed common areas are well-suited for group or casual gatherings, while social and recreational opportunities create a sense of community.

---

## Included Amenities

- Escorts to meals and activities for first 5 days
- Choice of two meals daily served restaurant-style
- Flexible dining hours
- Weekly light housekeeping and linen change
- Laundry facilities
- Urgent call system
- 24 hour on-site Resident Assistant staffing
- Pastoral care
- Wings® wellness intellectually stimulating programs, spiritual care services, group fitness classes, fitness center, volunteer opportunities
- Designated complimentary transportation to shopping and outings
- Health and wellness clinic
- All utilities (heat, electric, central air conditioning, water, sewer, and trash)
- Telephone service
- Basic cable television service
- Open public Wi-Fi
- Priority access to other GracePointe Crossing and Presbyterian Homes & Services living and care options based on availability
- Smoke-free community



## Other Conveniences

*Additional fees may apply*

- Outpatient therapy (physical, occupational and speech)
- Access to designated Physician or Nurse Practitioner for on-site services
- Assistance with accessing community resources and social services
- Laundry service
- Additional housekeeping
- Transportation for shopping and outings
- Handyman
- On-site banking services
- Third meal option
- Guest suite
- Guest dining
- Second occupant, \$700 plus personal care
- Pets are welcome (guidelines apply)

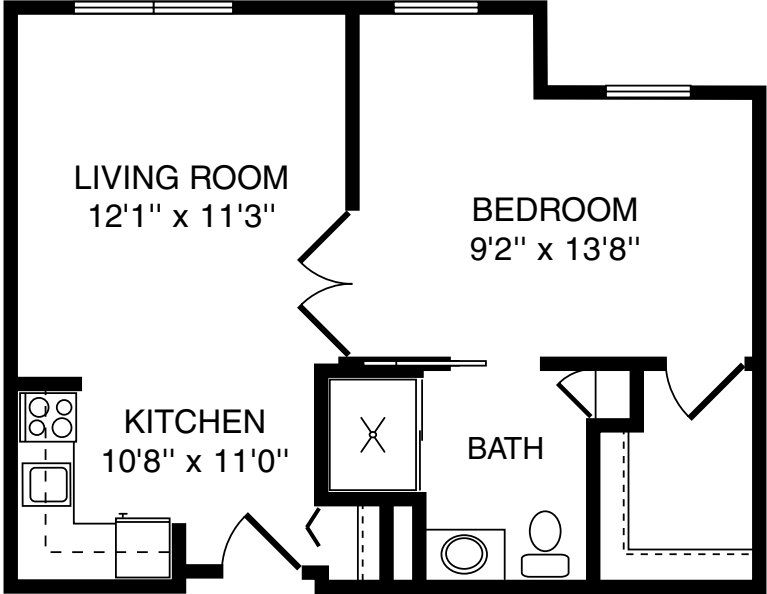
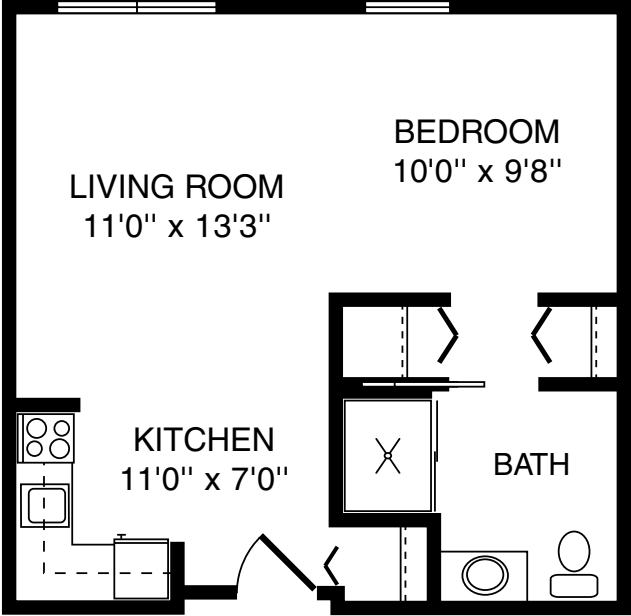
## Distinctive Details

- Bright open floor plans emphasize spacious rooms
- Kitchenette with refrigerator and stove
- Oak cabinetry throughout
- Blinds on all windows
- Walk-in storage in select apartments
- Individually controlled heat and central air conditioning
- Bathroom with roll-in shower and grab bar

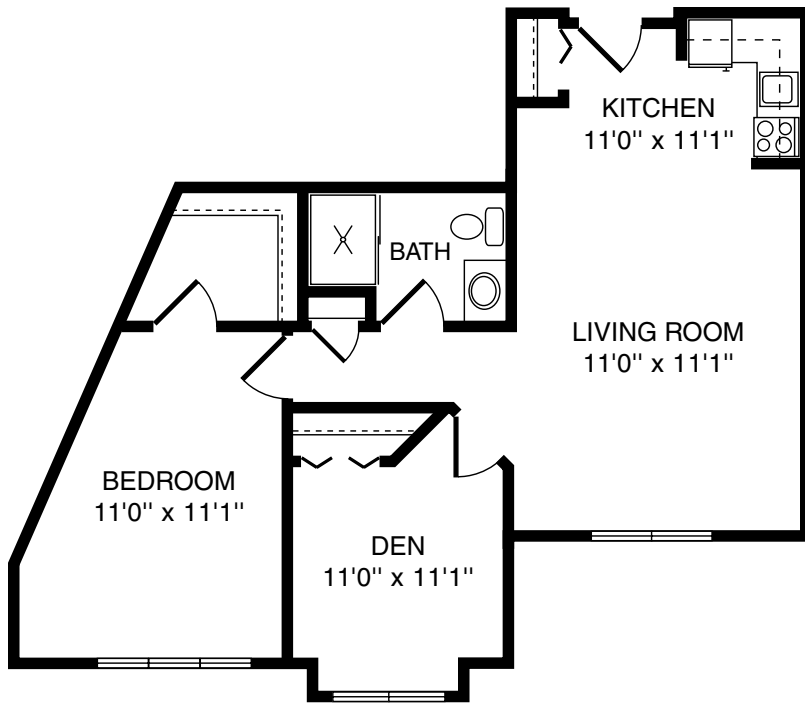
# Sample Floor Plans

---

**The Chicory**  
Studio | 448 Sq. Ft.



**The Violet**  
One Bedroom | 517 Sq. Ft.

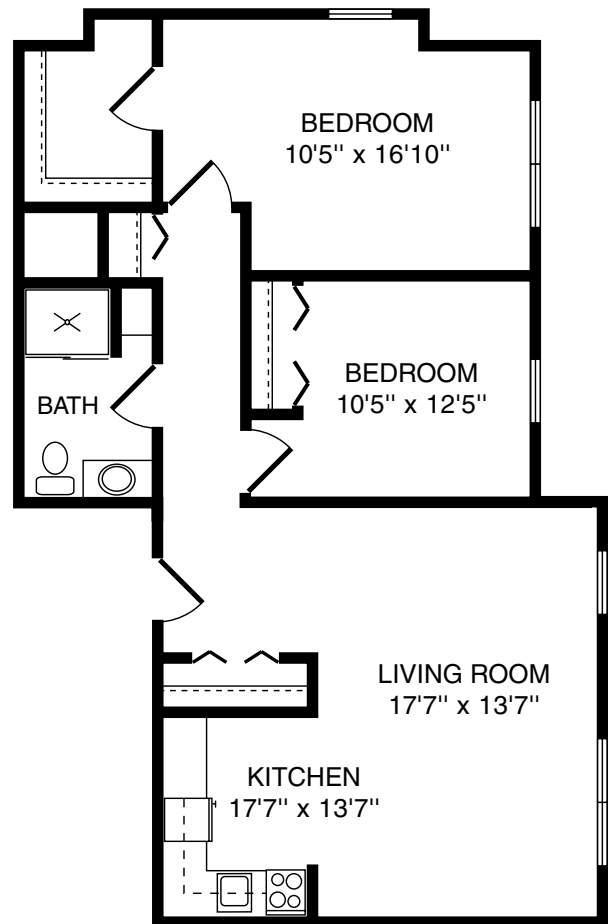


### The Ladyslipper

One Bedroom/Den | 835 Sq. Ft.

### The Baneberry

Two Bedroom | 923 Sq. Ft.



GracePointe Crossing

Assisted Living  
763-689-1474

*Floor plans, features and amenities are subject to change without notice. Stated dimensions and square footage are approximate. Additional floor plans may be available. Please ask about availability.*

At GracePointe Crossing, we know each individual is just that—an individual. And our services reflect that philosophy. Select from a broad range of options depending on your personal preferences. It's all based on the principle of choice. **And the choice is yours.**

## Monthly Personal Care Fee Ranges\*

| Points from Assessment | Monthly Fee      |
|------------------------|------------------|
| 0–9                    | \$370 (required) |
| 10–101                 | \$740–\$1,850    |
| 102–239                | \$2,220–\$3,750  |
| 240–354                | \$3,960–\$4,800  |
| 355–492                | \$5,010–\$6,060  |

\*The care fee ranges above are for estimating purposes only. Rates effective April 2022.

## Included in Your Personal Care Fees:

- Initial and ongoing nursing assessments
- Scheduled nursing hours and on-call nursing available for staff consultation
- Nurse liaison with health care professionals
- Nurse scheduling of lab draws
- Nurse maintaining clinical record information
- Daily reassurance check

## Monthly Rental Fee

| Apartment       | Sq. Ft. | Rate    |
|-----------------|---------|---------|
| Studio          | 396–448 | \$2,590 |
| One Bedroom     | 517–553 | \$2,910 |
| One Bedroom/Den | 804–835 | \$3,205 |
| Two Bedroom     | 923     | \$3,485 |

## Assisted Living Service Fees

In addition to the monthly rental fee, a monthly personal care fee for assisted living services is required based on the amount of care provided. The following steps help to assess your care needs and guide you through the residency process:

### Step 1: Reserve an apartment at GracePointe Crossing.

We will help you through the reservation process and provide you with essential information in preparation for the following steps.

### Step 2: Schedule an assisted living care assessment appointment.

A nurse will meet with you to complete an initial assessment and help create a personalized care plan. The assessment will include a review of your individualized needs and a recommendation of services that could be provided to meet those needs. Each service is assigned a point value and the assessment will give you an estimated total number of points.\* You can view the assessment by visiting [PresHomes.org/CGPC](http://PresHomes.org/CGPC) or scanning the QR code.



### Step 3: Schedule a residency agreement appointment.

We will review the residency agreement, payment information and other resources with you. Once the residency agreement process is complete, your move-in date will be confirmed.

*Pricing subject to change. Residency agreement available upon request.*



**763-689-1474**

1545 River Hills Parkway NW  
Cambridge, MN 55008

[GracePointeCrossing.org](http://GracePointeCrossing.org)

*Due to COVID-19 or other future circumstance, some features may be temporarily unavailable or offered in a different way. We anticipate features will become available in original form once it is prudent to do so. Presbyterian Homes & Services (PHS) communities comply with applicable federal civil rights laws and do not discriminate on the basis of race, color, national origin, age, disability or sex.*

[PresHomes.org](http://PresHomes.org)

Español (Spanish): *Llame al 1-844-558-6125*

Hmoob (Hmong): *Hu rau 1-844-558-6125*

Tagalog (Filipino): *Tumawag sa 1-844-558-6125*

Professional management by PHS Management, LLC © 2021 Presbyterian Homes and Services  
All faiths welcome. Equal housing opportunity.

## Living Options

- Townhomes
- Senior apartments
- Assisted living apartments
- Assisted living memory care residence
- Care center
- Care center memory care

 **presbyterian  
homes & services**  
*freedom to live well®*