

The Commons

ASSISTED LIVING



HEARTWOOD

A SENIOR LIVING COMMUNITY

Nestle into the comfort of a Heartwood lifestyle, where thoughtfully designed homes are accompanied by supportive services like housekeeping, dining, and personal care to provide carefree living at its best. With grand amenities and social opportunities just a step away, every day is yours to enjoy however you choose.

Distinctive Details

- Bright open floor plans emphasize spacious rooms with nine foot ceilings
- Kitchen with stove/oven, refrigerator and built-in microwave
- Blinds on all windows
- Individually controlled heat and central air conditioning
- Accessible bathroom with elevated toilet, roll-in shower and grab bar

Included Amenities

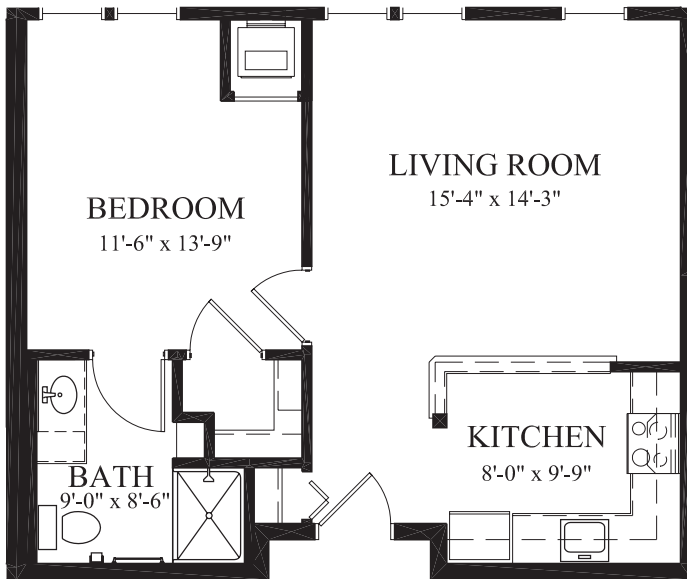
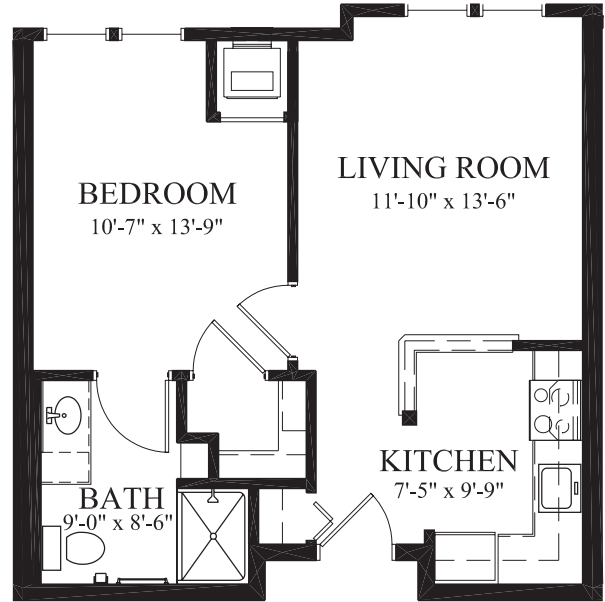
- Two meals daily served restaurant-style
- Flexible dining hours
- Weekly light housekeeping and linen change
- Urgent call system
- 24 hour on-site Resident Assistant staffing
- Designated complimentary transportation to shopping and outings
- Social programs and events
- Pastoral care
- Health and wellness clinic
- Telephone service
- Basic cable television service
- Utilities (heat, electric, central air conditioning, water, sewer and trash)
- Laundry facilities
- Priority access to other Cuyuna Regional Medical Care Center and Presbyterian Homes & Services living and care options based on availability
- Smoke-free community

Other Conveniences (additional fees may apply)

- Specialized nursing and therapy visits (physical, occupational and speech)
- On-site laboratory services
- Assistance with arranging transportation to medical and social service appointments
- Assistance with accessing community resources and social services
- Additional housekeeping
- Laundry service
- Transportation for shopping and outings
- Underground heated parking and car wash bay
- Additional storage
- Third meal option
- Guest dining
- Guest suites
- Second occupant, \$700 plus personal care fee
- Pets are welcome (guidelines apply)

Sample Floor Plans

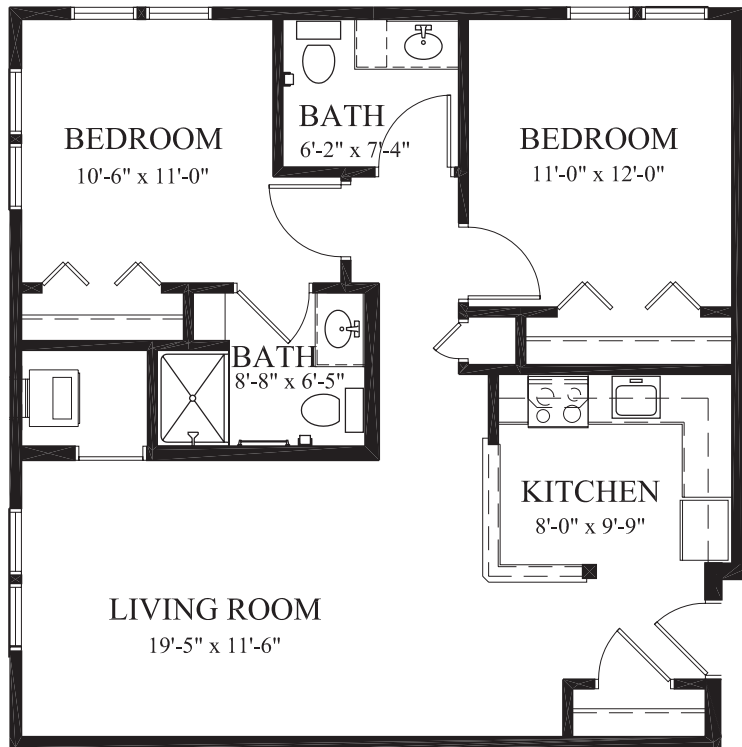
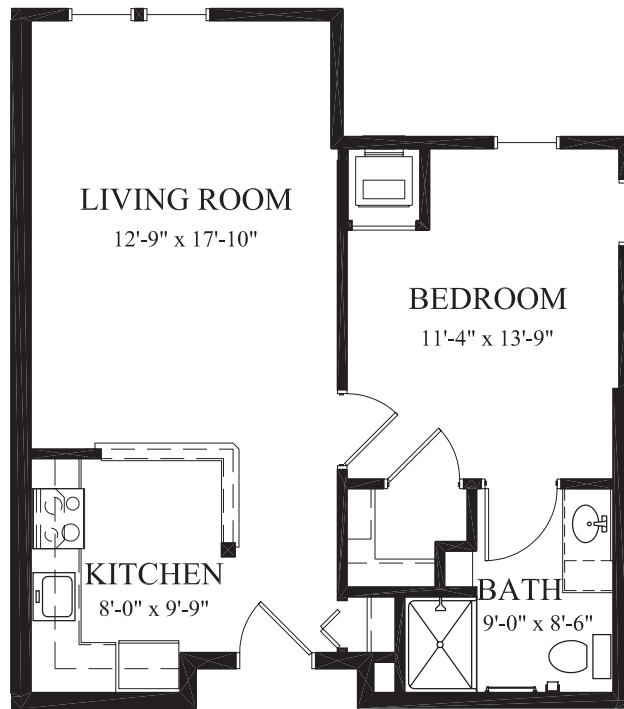
Balsam Fir
561 Sq. Ft.
One Bedroom



Cedar
650 Sq. Ft.
One Bedroom

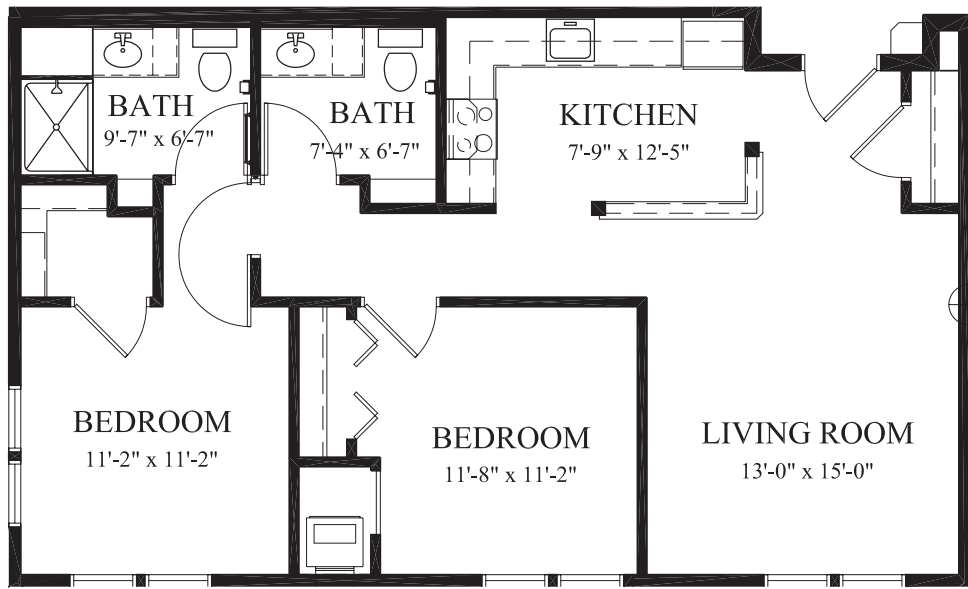
Floor plans, features and amenities are subject to change without notice.
Stated dimensions and square footage are approximate. Please ask about availability.

Hickory
658 Sq. Ft.
One Bedroom



Magnolia
950 Sq. Ft.
Two Bedroom

Walnut
951 Sq. Ft.
Two Bedroom



Monthly Fees

Apartment	Square Feet	Monthly Fee
One Bedroom	561—658	\$3,150—\$3,410
Two Bedroom/Two Bath	950	\$3,700

Monthly Personal Care Fees

In addition to the monthly fee, a monthly Points of Care Fee is required. A nurse will meet with you to assess your personal care needs, following a reservation deposit.

All Points of Care levels include:

- Initial nursing assessment
- Scheduled Nursing hours and on-call staff consultation
- Nurse liaison with health care professionals
- Quarterly Nurse review
- Nurse coordination of laboratory requests
- Nurse maintains clinical record information
- Escorts to meals, activities and appointments on premises as needed

Points of Care Fees

Refer to the following page for a menu of the most common services and the points assigned to each.

Compare your total points of care from the next page with these ranges to estimate your monthly service fee:	Points	Monthly Fee
	0-9	\$285 (required)
	10-32	\$570
	33-55	\$855
	56-78	\$1,140
	79-101	\$1,425
	102-124	\$1,710
	125-147	\$1,995
148-170	\$2,280	
171-193	\$2,565	
<hr/>		
For each additional 23 points, add \$180.		

Pricing subject to change.

Residency agreement available upon request.

Below is a sampling of personal care services that are available and the associated points. Please inquire to learn about additional services.

Shower

Multiply the # of desired showers/week by the rating

_____ [5] Per shower – no transfer assist

_____ [7] Per shower – 1 person transfer

_____ [10] Per shower – mechanical lift

Bath

Multiply the # of desired baths/week by the rating

_____ [9] Per bath – 1 person transfer

_____ [12] Per bath – mechanical lift

Light Breakfast or Snack Preparation in Apartment

_____ [11] Food & supplies provided by resident

Meal Assistance

_____ [42] Consistent assistance with dining

Bathroom Assistance

_____ [55] Standard – (1-6 times daily)

_____ [86] Standard – (7+ times daily)

_____ [86] Extensive – (1-6 times daily)

_____ [114] Extensive – (7+ times daily)

Morning and Bedtime

Dressing and Grooming

_____ [42] Standard – no transfer assist

_____ [70] Extensive – 1 person transfer

_____ [84] Extensive – mechanical lift

Medication

_____ [15] Medication set-up (1-8 medications)

_____ [20] Medication set-up (9+ medications)

_____ [25] Syringe set-up (includes medication set-up)

_____ [10] Medication assistance (multiply # of times medications are given/day by the rating)

_____ [33] Sliding scale insulin set-up (includes medication set-up)

Diabetes Management

_____ [7] Blood sugar monitoring/insulin injections (1 time daily)

Tasks – 1 Time Daily

_____ [7] Standard – for example: reassurance checks and vital signs

_____ [11] Extensive – for example: nebulizer treatments; wound, ostomy or catheter care

Please inquire about other available services.

_____ **TOTAL ESTIMATED POINTS**

This estimate is offered for planning purposes only. A nurse will meet with you prior to move-in to determine services. Other charges may apply.

Building on the experience and integrity of its founders, Heartwood brings you the finest senior living community in the heart of Minnesota.

Housing Choices

- Terrace senior apartments
- Commons assisted living apartments
- Arbor assisted living memory care residence
- Hallett Cottages assisted living memory care

At Heartwood, your home embraces the beauty of its scenic surroundings and extends well beyond your front door.

Community Attractions

- General store*
- Wellness center*
- Meditation chapel*
- Library/computer lab*
- Billiards room*
- Lounge*
- Activity room*
- Beauty/barber salon*
- Deli*
- Private family dining*
- Guest suites*
- Conference center*
- Located on the Medical Campus in Crosby
- Access to Cuyuna Lakes Bike Trail

Heartwood is a non-profit senior living community rooted in the shared vision of its two founding organizations, Cuyuna Regional Medical Center and Presbyterian Homes & Services. Both have a decades-rich history of providing progressive, personal care and promoting all aspects of health and well-being for those they serve. Professional management by PHS Management, LLC.

Presbyterian Homes & Services (PHS) communities comply with applicable federal civil rights laws and do not discriminate on the basis of race, color, national origin, age, disability or sex. www.preshomes.org

Español (Spanish): Llame al 1-844-558-6125

Hmoob (Hmong): Hu rau 1-844-558-6125

Tagalog (Tagalog – Filipino): Tumawag sa 1-844-558-6125

© 2008 Presbyterian Homes and Services. All faiths welcome.

Equal housing opportunity.

9/20



*Due to COVID-19 or other future circumstance, this and other features may be temporarily unavailable or offered in a different way. We anticipate features will become available in original form once it is prudent to do so. Please refer to the Special Message attachment for a list of the most common modifications to standard practices and offerings.

Address: 500 Heartwood Drive, Crosby, MN 56441

Phone: 218-545-8500 | Website: www.heartwoodliving.org