



# Johanna Shores

The Commons

Assisted Living

# Welcome to Johanna Shores

For a setting that offers freedom combined with the comfort of knowing supportive services are available, choose The Commons assisted living.

Shape your daily life as you desire with the support of Liberty Personally Designed Living™, an innovative approach to personal care and assistance. Nicely appointed common areas are well-suited for group or casual gatherings, while social and recreational opportunities create a sense of community.

---

## Included Amenities

- Choice of two meals daily (served restaurant-style)
- Weekly light housekeeping and linen change
- Escorts to meals and activities for first 5 days
- Urgent call system
- 24 hour on-site Resident Assistant staffing
- Designated complimentary transportation to shopping and outings
- Wings® wellness intellectually stimulating programs, spiritual care services, group fitness classes, fitness center with pool, volunteer opportunities
- Pastoral care
- Laundry facilities
- Monitored smoke detector
- Controlled entrance
- Month-to-month residency agreement
- Utilities (heat, electric, central air conditioning, water, sewer, and trash)
- Telephone service
- Basic cable television service
- Open public Wi-Fi
- Priority access to other Presbyterian Homes & Services living and care options based on availability
- Smoke-free community



## Other Conveniences

*Additional fees may apply*

- Restaurant-style dining
- Transportation for shopping and outings
- Assistance with arranging transportation to medical and social service appointments
- Assistance with accessing community resources and social services
- Access to designated Physician or Nurse Practitioner for on-site services
- Additional home care and hospice services available through Optage®
- Coordination of specialized nursing and therapy visits
- Additional housekeeping
- Laundry service
- Second occupant, \$775 plus personal care
- Third meal option
- Guest dining / Guest suite
- Pets are welcome (guidelines apply)

## Distinctive Details

- Bright open floor plans emphasize spacious rooms with nine foot ceilings
- Refrigerator, stove/oven and microwave
- Blinds on all windows
- Wood cabinetry throughout
- Individually controlled heat and central air conditioning
- Bathroom with roll-in shower and grab bar

# Sample Floor Plans

**Chippewa**  
Studio | 451 Sq. Ft.



**Clearwater**  
Studio | 486 Sq. Ft.

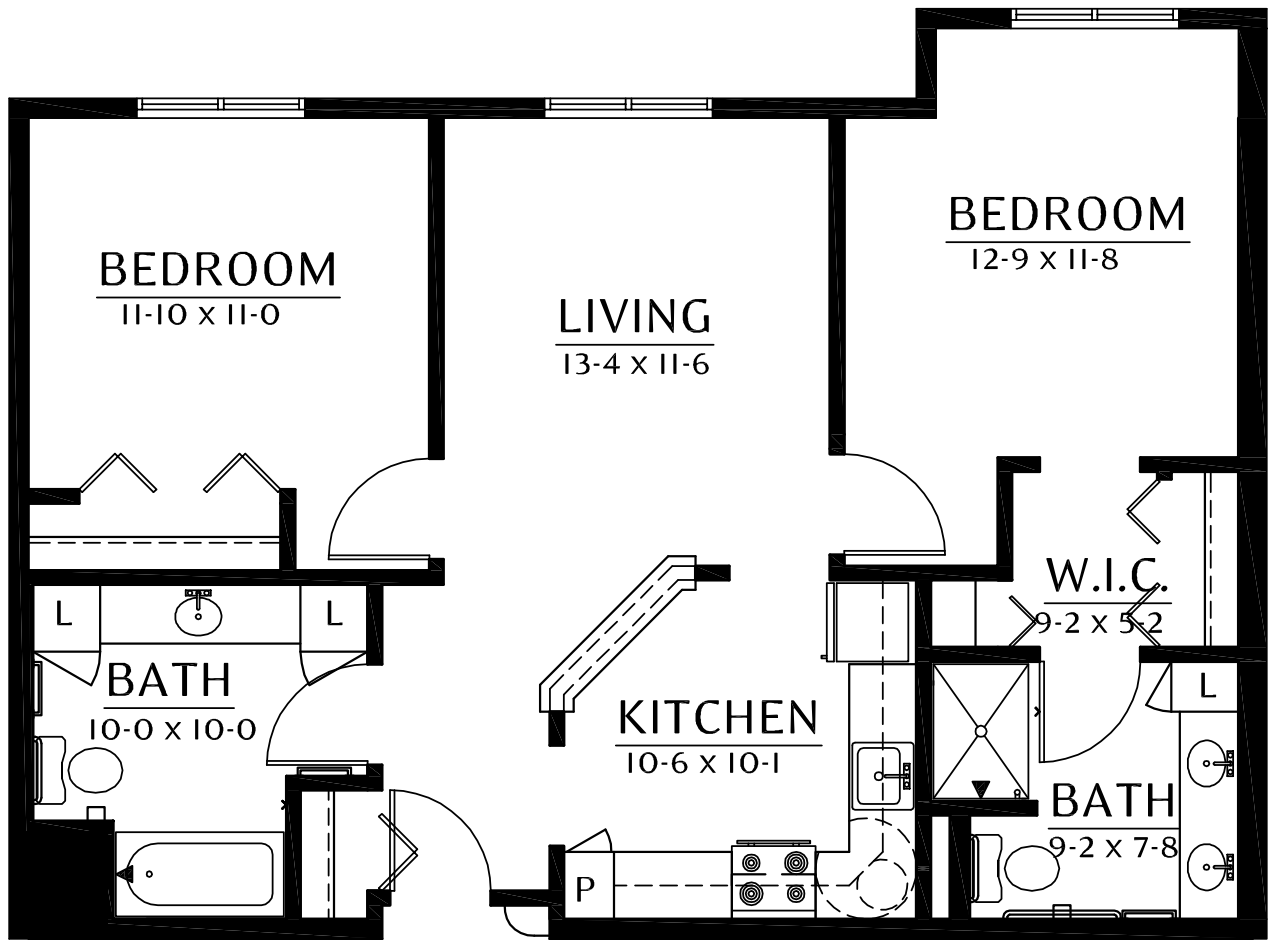
# Minnesota

One Bedroom | 655 Sq. Ft.



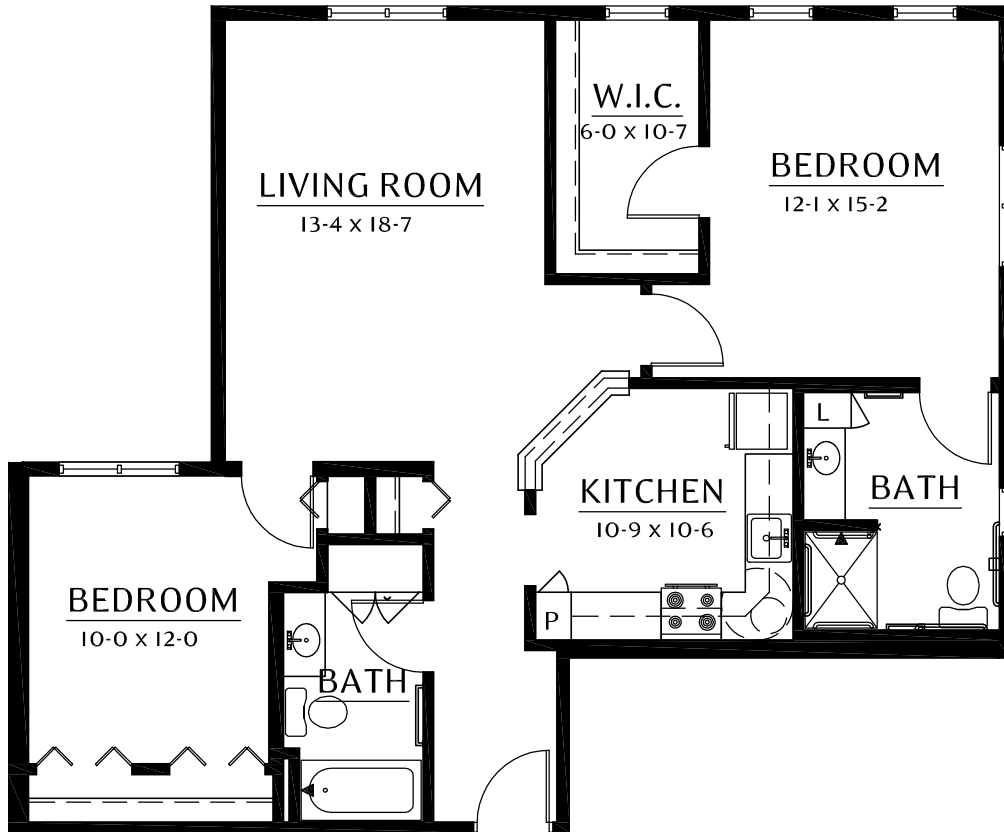
# St. Croix

Two Bedroom | 947 Sq. Ft.



# Zumbro

Two Bedroom | 1,140 Sq. Ft.



*Floor plans, features and amenities are subject to change without notice. Stated dimensions and square footage are approximate. Additional floor plans may be available. Please ask about availability.*

At Johanna Shores, we know each individual is just that—an individual. And our services reflect that philosophy. Select from a broad range of options depending on your personal preferences. It's all based on the principle of choice. **And the choice is yours.**

## Monthly Personal Care Fee Ranges\*

Points from Assessment	Monthly Fee
0–9	\$435 (required)
10–101	\$870–\$2,175
102–239	\$2,610–\$4,335
240–354	\$4,545–\$5,385
355–492	\$5,595–\$6,645

\*The care fee ranges above are for estimating purposes only.

## Included in Your Personal Care Fees:

- Initial and ongoing nursing assessments
- Scheduled nursing hours and on-call nursing available for staff consultation
- Nurse liaison with health care professionals
- Nurse scheduling of lab draws
- Nurse maintaining clinical record information
- Daily reassurance check

## Monthly Rental Fee

Apartment	Sq. Ft.	Rate
Studio	445–503	\$3,715–\$3,795
One Bedroom	617–705	\$4,250–\$4,445
Two Bedroom/Two Bath	947–1,140	\$5,375–\$5,550

Lakeside differential is an additional monthly fee.

## Assisted Living Service Fees

In addition to the monthly rental fee, a monthly personal care fee for assisted living services is required based on the amount of care provided. The following steps help to assess your care needs and guide you through the residency process:

**Step 1: Reserve an apartment at Johanna Shores.** We will help you through the reservation process and provide you with essential information in preparation for the following steps.

**Step 2: Schedule an assisted living care assessment appointment.** A nurse will meet with you to complete an initial assessment and help create a personalized care plan. The assessment will include a review of your individualized needs and a recommendation of services that could be provided to meet those needs. Each service is assigned a point value and the assessment will give you an estimated total number of points.\* To view the care assessment, scan the QR code or visit [JohannaShores.org](http://JohannaShores.org) and click on "Resident Documents."



**Step 3: Schedule a residency agreement appointment.** We will review the residency agreement, payment information and other resources with you. Once the residency agreement process is complete, your move-in date will be confirmed.

Pricing subject to change. Residency agreement available upon request.



**651-631-6070**

3200 Lake Johanna Boulevard  
Arden Hills, MN 55112

**JohannaShores.org**

*Due to COVID-19 or other future circumstance, some features may be temporarily unavailable or offered in a different way. We anticipate features will become available in original form once it is prudent to do so. Presbyterian Homes & Services (PHS) communities comply with applicable federal civil rights laws and do not discriminate on the basis of race, color, national origin, age, disability or sex.*

PresHomes.org

Español (Spanish): Llame al 1-844-558-6125

Hmoob (Hmong): Hu rau 1-844-558-6125

Tagalog (Filipino): Tumawag sa 1-844-558-6125

Professional management by PHS Management, LLC © 2021 Presbyterian Homes and Services  
All faiths welcome. Equal housing opportunity.

## Living Options

- Row-style homes
- Senior apartments
- Assisted living
- Assisted living memory care
- Care center
- Care center memory care

 **presbyterian  
homes & services**  
*freedom to live well®*

9/22 