



# SummerHouse of Shoreview

Senior Apartments

# Welcome to SummerHouse of Shoreview

At SummerHouse of Shoreview, your ideal residence is complemented by an assortment of conveniences and amenities to enrich your life.

Enjoy maintenance-free living and comfortable, convenient floor plans. Regardless of which plan you choose, it's sure to reflect your sense of style as you add your own personal touch.

---

## Included Amenities

- Utilities (water, sewer, and trash)
- Controlled entrance
- Designated complimentary transportation to shopping and outings
- Pastoral care
- Wings® wellness intellectually stimulating programs, spiritual care services, group fitness classes, fitness center, volunteer opportunities
- Weekly continental breakfast
- Basic cable television service
- Month-to-month residency agreement
- Property tax and building insurance
- Apartment and building maintenance
- Lawn care and snow removal
- Priority access to other Presbyterian Homes & Services living and care options based on availability
- Smoke-free environment

## Other Conveniences

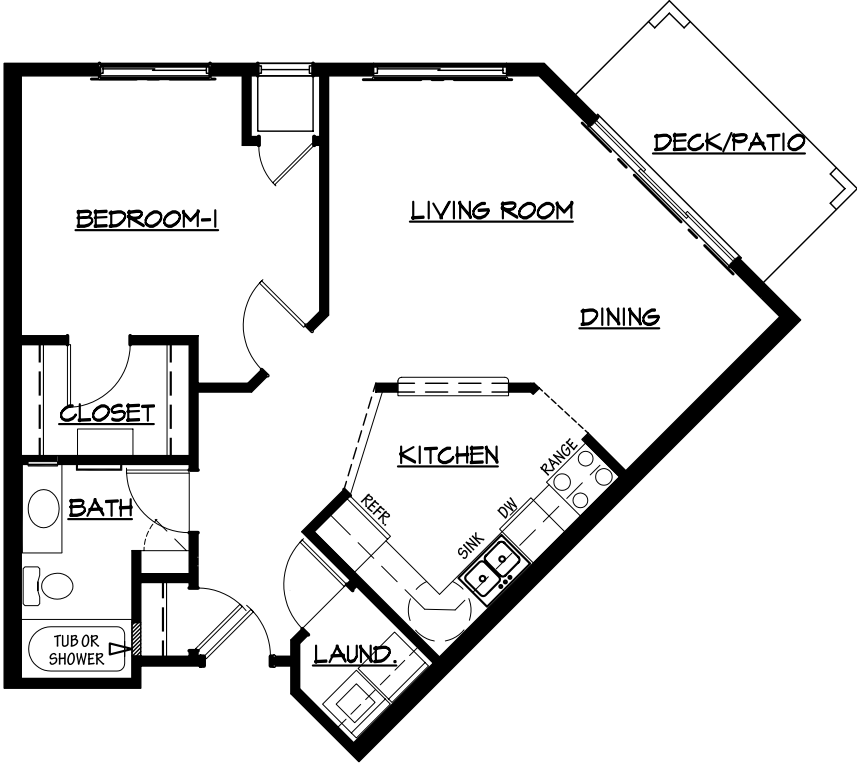
*Additional fees may apply*

- Heat and electric service
- Underground heated parking with car wash bay
- Handyman
- Transportation for shopping and outings
- Guest suite
- Home delivered meals, home care and hospice services available through Optage®
- Pets are welcome (guidelines apply)

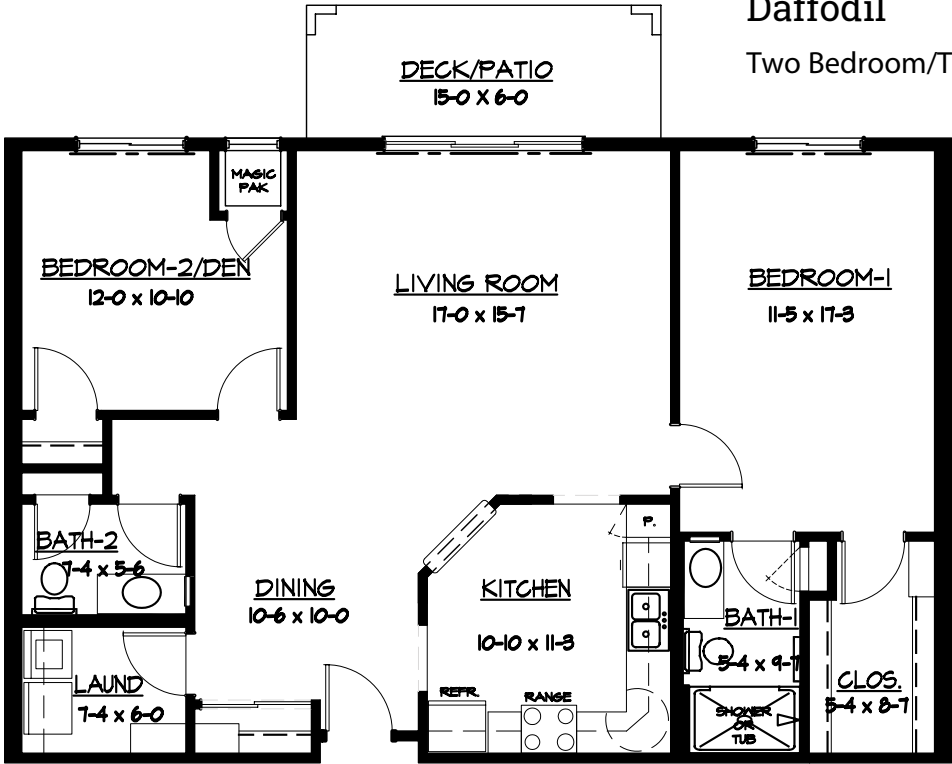


# Sample Floor Plans

**Buttercup**  
One Bedroom | 795 Sq. Ft.



**Daffodil**  
Two Bedroom/Two Bath | 1,175 Sq. Ft.



# Foxglove

Two Bedroom/Two Bath | 1,254 Sq. Ft.



SummerHouse of Shoreview

Senior Apartments  
651-765-3900

*Floor plans, features and amenities are subject to change without notice. Stated dimensions and square footage are approximate. Additional floor plans may be available. Please ask about availability.*

Our senior apartments offer maintenance-free living and comfortable floor plans with value and convenience. Nicely appointed common areas are well-suited for group events and casual gatherings. Social, recreational and volunteer opportunities help create a sense of community.

## Distinctive Details

- Bright open floor plans emphasize spacious rooms
- Fully equipped kitchen with stove, self-cleaning oven, refrigerator, microwave, dishwasher and garbage disposal
- Oak cabinetry throughout
- Blinds on all windows
- Thoughtfully designed bathroom with grab bar and either a tub with shower or walk-in shower
- Convenient in-home laundry with full size washer and dryer
- Walk-in storage
- Individually controlled heat and central air conditioning
- Deck or patio with most apartments
- Storage closet in garage area

## Monthly Rental Fee

| Apartment   | Sq. Ft.     | Entrance Deposit  | Rate                         |                                 |
|-------------|-------------|-------------------|------------------------------|---------------------------------|
|             |             |                   | <i>With Entrance Deposit</i> | <i>Without Entrance Deposit</i> |
| One Bedroom | 756–795     | \$35,700–\$37,700 | \$1,360–\$1,440              | \$1,539–\$1,629                 |
| Two Bedroom | 1,064–1,254 | \$50,000–\$59,200 | \$1,915–\$2,240              | \$2,165–\$2,536                 |

The entrance deposit essentially reduces the monthly fee and is 100% refundable; it is only required for the “Monthly Fee with Entrance Deposit” option.



*Pricing subject to change. Residency agreement available upon request.*



**651-765-3900**

4655 North Victoria Street  
Shoreview, MN 55126

[SummerHouseShoreview.org](http://SummerHouseShoreview.org)

*Due to COVID-19 or other future circumstance, some features may be temporarily unavailable or offered in a different way. We anticipate features will become available in original form once it is prudent to do so. Presbyterian Homes & Services (PHS) communities comply with applicable federal civil rights laws and do not discriminate on the basis of race, color, national origin, age, disability or sex.*

[PresHomes.org](http://PresHomes.org)

Español (Spanish): *Llame al 1-844-558-6125*

Hmoob (Hmong): *Hu rau 1-844-558-6125*

Tagalog (Filipino): *Tumawag sa 1-844-558-6125*

Professional management by PHS Management, LLC © 2021 Presbyterian Homes and Services  
All faiths welcome. Equal housing opportunity.

