



SummerWood of Plymouth

The Commons

Assisted Living

Welcome to SummerWood of Plymouth

For a setting that offers freedom combined with the comfort of knowing supportive services are available, choose The Commons assisted living.

Shape your daily life as you desire with the support of Liberty Personally Designed Living™, an innovative approach to personal care and assistance. Nicely appointed common areas are well-suited for group or casual gatherings, while social and recreational opportunities create a sense of community.

Included Amenities

- Escorts to meals and activities for first 5 days
- Choice of two meals daily served restaurant-style
- Flexible dining hours
- Weekly light housekeeping and linen change
- Urgent call system
- 24 hour on-site Resident Assistant staffing
- Wings® wellness intellectually stimulating programs, spiritual care services, group fitness classes, fitness center, volunteer opportunities
- Pastoral care
- Designated complimentary transportation to shopping and outings
- Private storage unit
- Open public Wi-Fi
- Basic satellite television service
- Utilities (heat, electric, central air conditioning, water, sewer, and trash)
- Priority access to other Presbyterian Homes & Services living and care options based on availability



Other Conveniences

Additional fees may apply

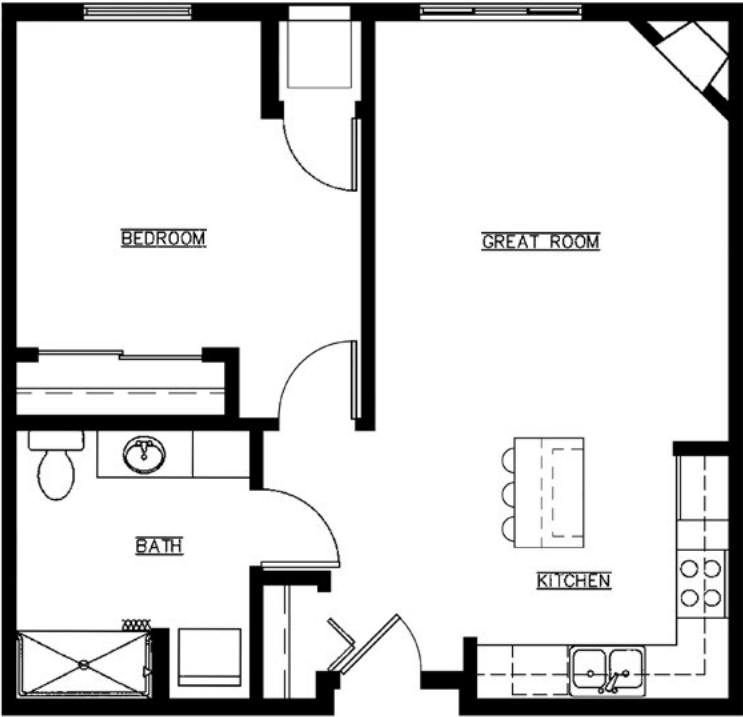
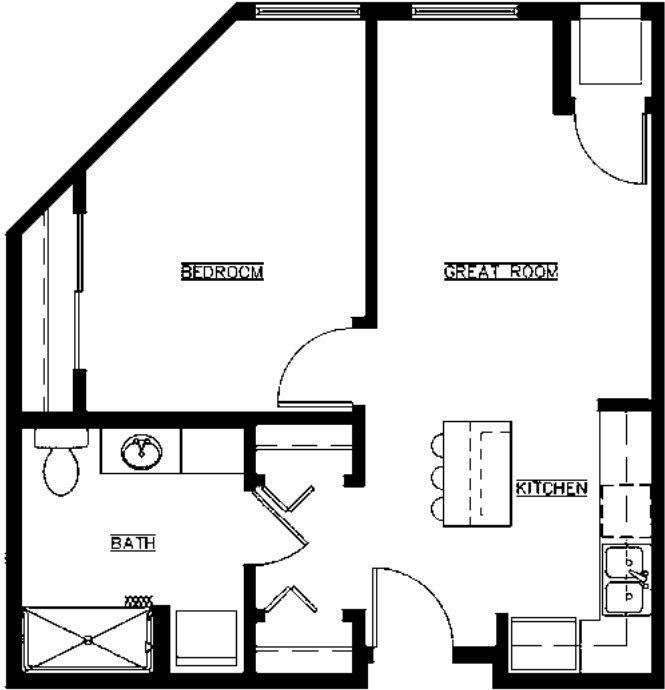
- Laundry service
- Transportation for shopping and outings
- Assistance with arranging transportation to medical and social service appointments
- Assistance with accessing community resources and social services
- Access to designated Physician or Nurse Practitioner for on-site services
- Coordination of specialized nursing and therapy visits
- Additional home care and hospice services available through Optage®
- Second occupant, \$775 plus personal care
- Pharmacy delivery (resident-specific)
- Enhanced satellite package
- Guest dining
- Handyman
- Underground heated parking
- Third meal option

Distinctive Details

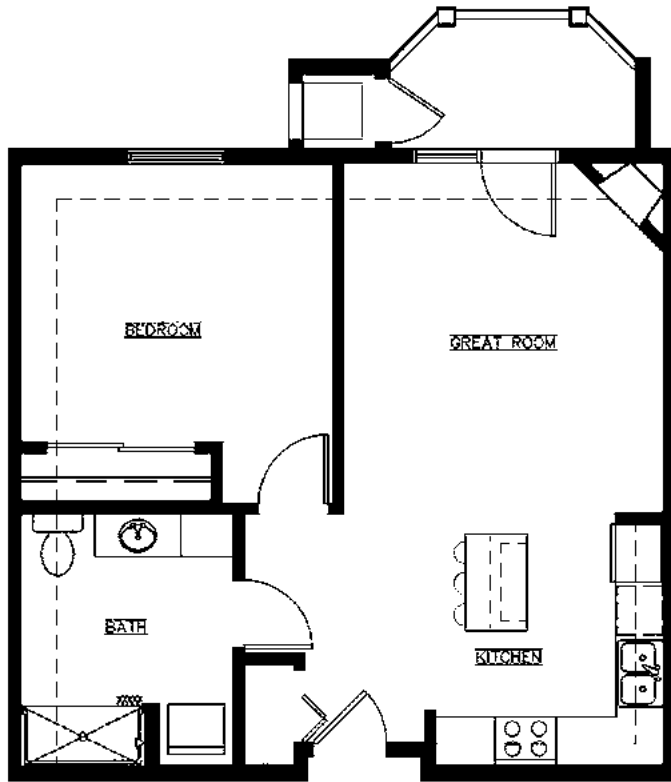
- Spacious one and two bedroom apartments
- Thoughtfully designed bathrooms with roll-in showers
- Convenient in-home laundry with washer and dryer
- Bright open floor plans
- Refrigerator, stove/self-cleaning oven, dishwasher, microwave and garbage disposal
- Individually controlled heat and central air conditioning
- Many homes with fireplace and/or screen porch

Sample Floor Plans

The Fiddlewood
One Bedroom | 600 Sq. Ft.



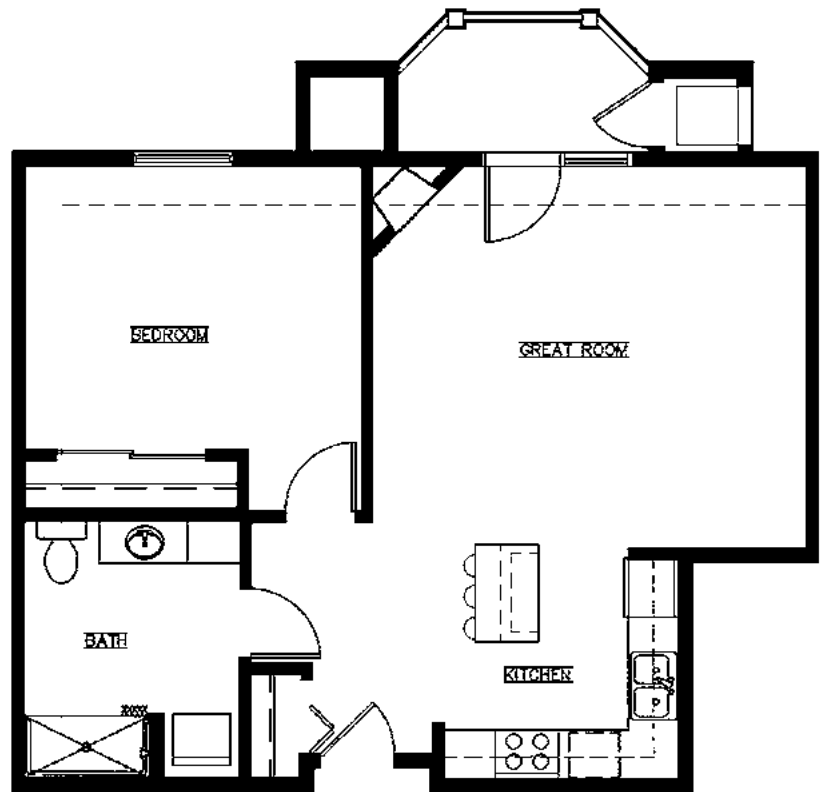
The Huckleberry
One Bedroom | 702 Sq. Ft.



The Lilac

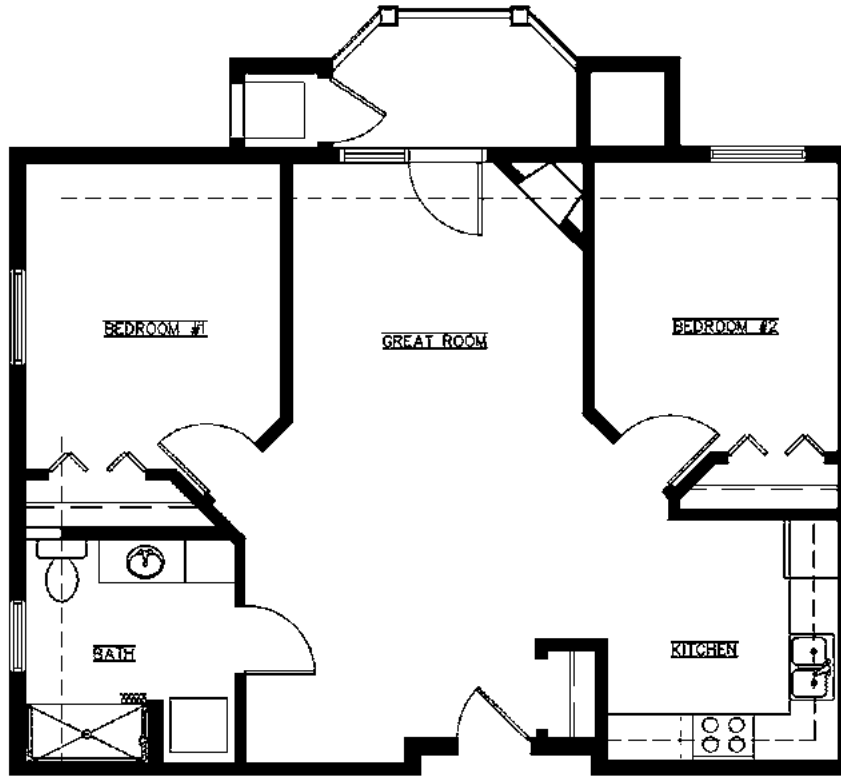
One Bedroom | 711 Sq. Ft.

The Myrtle
One Bedroom | 803 Sq. Ft.



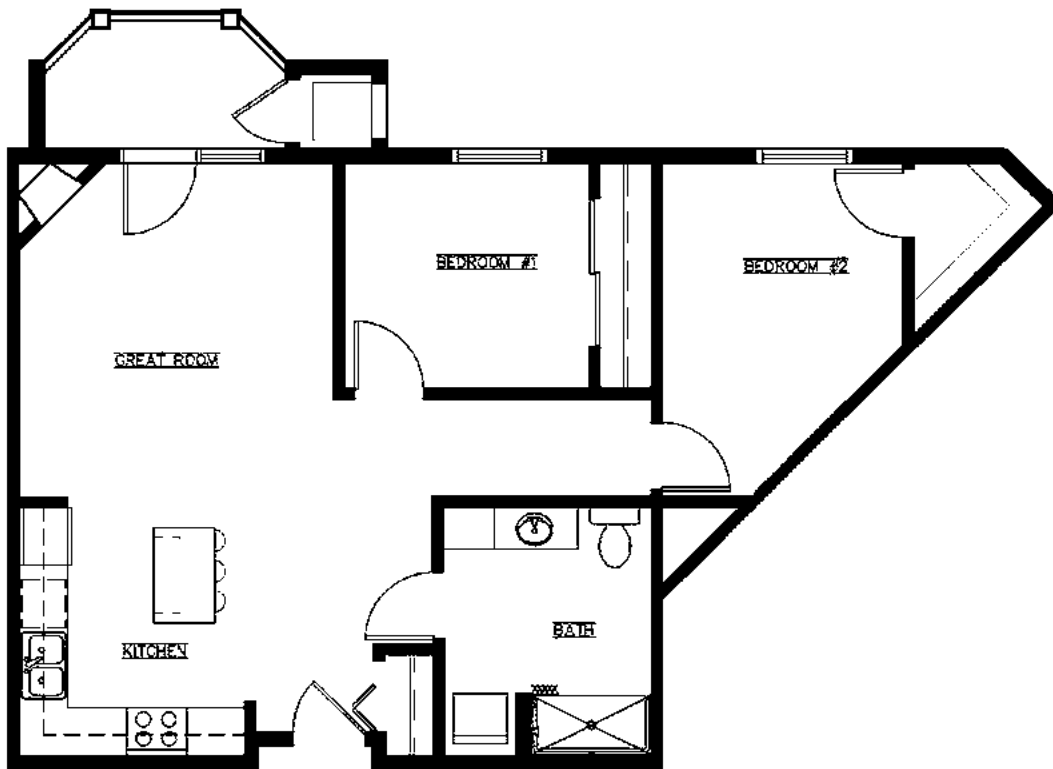
The Snowberry

Two Bedroom | 896 Sq. Ft.



The Periwinkle

Two Bedroom | 890 Sq. Ft.



Floor plans, features and amenities are subject to change without notice. Stated dimensions and square footage are approximate. Additional floor plans may be available. Please ask about availability.

At SummerWood of Plymouth, we know each individual is just that—an individual. And our services reflect that philosophy. Select from a broad range of options depending on your personal preferences. It's all based on the principle of choice. **And the choice is yours.**

Monthly Personal Care Fee Ranges*

Points from Assessment	Monthly Fee
0–9	\$435 (required)
10–101	\$870–\$2,175
102–239	\$2,610–\$4,335
240–354	\$4,545–\$5,385
355–492	\$5,595–\$6,645

*The care fee ranges above are for estimating purposes only.

Included in Your Personal Care Fees:

- Initial and ongoing nursing assessments
- Scheduled nursing hours and on-call nursing available for staff consultation
- Nurse liaison with health care professionals
- Nurse scheduling of lab draws
- Nurse maintaining clinical record information
- Daily reassurance check

Monthly Rental Fee

Apartment	Sq. Ft.	Rate
One Bedroom	600–803	\$3,960–\$4,860
Two Bedroom	890–896	\$5,315–\$5,470

Assisted Living Service Fees

In addition to the monthly rental fee, a monthly personal care fee for assisted living services is required based on the amount of care provided. The following steps help to assess your care needs and guide you through the residency process:

Step 1: Reserve an apartment at SummerWood of Plymouth. We will help you through the reservation process and provide you with essential information in preparation for the following steps.

Step 2: Schedule an assisted living care assessment appointment. A nurse will meet with you to complete an initial assessment and help create a personalized care plan. The assessment will include a review of your individualized needs and a recommendation of services that could be provided to meet those needs. Each service is assigned a point value and the assessment will give you an estimated total number of points.* To view the care assessment, scan the QR code or visit SummerWoodPlymouth.org and click on "Resident Documents."



Step 3: Schedule a residency agreement appointment. We will review the residency agreement, payment information and other resources with you. Once the residency agreement process is complete, your move-in date will be confirmed.

Pricing subject to change. Residency agreement available upon request.



763-383-8888

16205 36th Avenue North
Plymouth, MN 55446

SummerWoodPlymouth.org

Living Options

- Senior apartments
- Assisted living apartments
- Assisted living memory care residence

Due to COVID-19 or other future circumstance, some features may be temporarily unavailable or offered in a different way. We anticipate features will become available in original form once it is prudent to do so. Presbyterian Homes & Services (PHS) communities comply with applicable federal civil rights laws and do not discriminate on the basis of race, color, national origin, age, disability or sex.

PresHomes.org

Español (Spanish): *Llame al 1-844-558-6125*

Hmoob (Hmong): *Hu rau 1-844-558-6125*

Tagalog (Filipino): *Tumawag sa 1-844-558-6125*

Professional management by PHS Management, LLC © 2021 Presbyterian Homes and Services
All faiths welcome. Equal housing opportunity.

9/22 

 **presbyterian
homes & services**
freedom to live well®