



# Towner Crest

Assisted Living

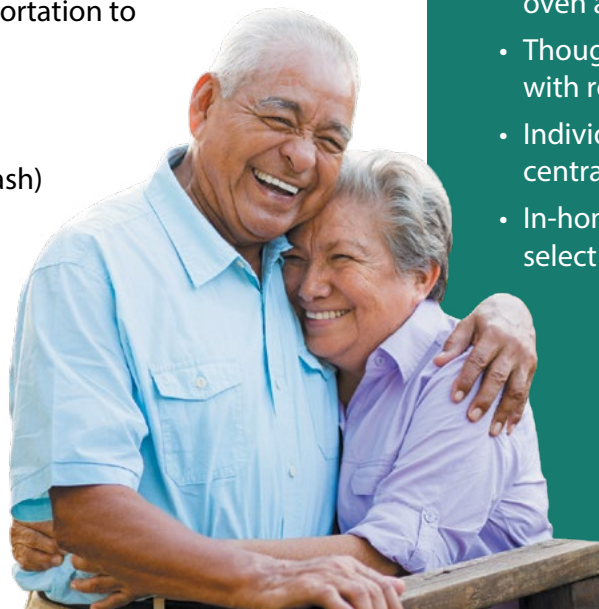
# Welcome to Towner Crest

For a setting that offers freedom combined with the comfort of knowing supportive services are available, choose The Commons assisted living.

Shape your daily life as you desire with the support of Liberty Personally Designed Living™, an innovative approach to personal care and assistance. Nicely appointed common areas are well-suited for group or casual gatherings, while social and recreational opportunities create a sense of community.

## Included Amenities

- Escorts to meals and activities for first 5 days
- Personal care package
- Choice of two meals daily
- Weekly light housekeeping and linen change (resident provides linens)
- Urgent call system
- 24 hour on-site Resident Assistant staffing
- Wings® Wellness: intellectually stimulating programs, spiritual care services, group fitness classes, fitness center, volunteer opportunities
- Campus Pastor
- Basic cable television service
- Laundry facilities
- Telephone service
- Open public Wi-Fi
- Designated complimentary transportation to shopping and outings
- Health and wellness
- Utilities (heat, electric, central air conditioning, water, sewer, and trash)
- Access to Town Center amenities and programs
- Priority access to other Towner Crest and Presbyterian Homes & Services living and care options based on availability
- Smoke-free community



## Other Conveniences

*Additional fees may apply*

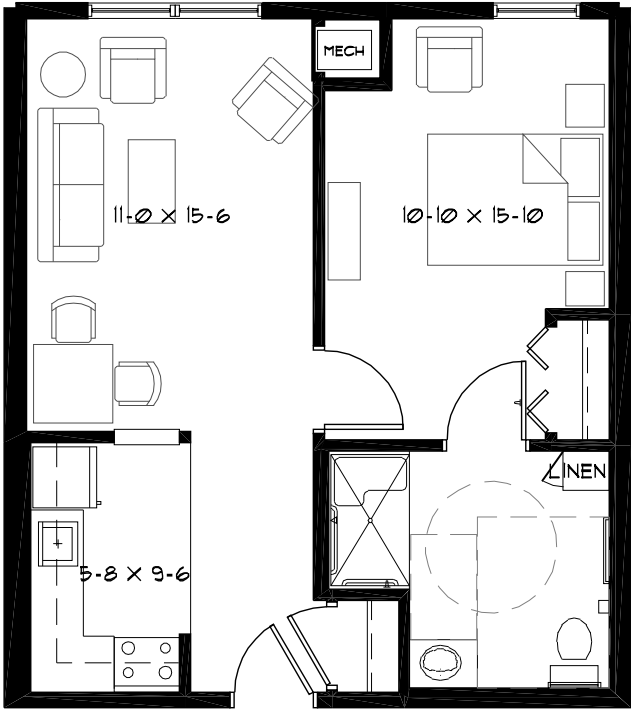
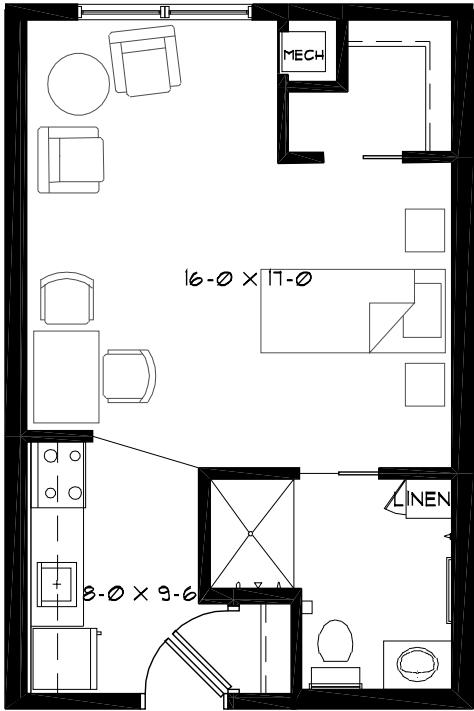
- Second occupant, \$1,180 plus personal care
- Personal care 24 hours a day
- Assistance with arranging transportation to medical and social service appointments
- Assistance with accessing community resources and social services
- Access to designated Physician or Nurse Practitioner
- Specialized diets
- Additional housekeeping
- Guest dining
- Internet
- Laundry service
- Additional storage
- Third meal option
- Pets are welcome (guidelines apply)

## Distinctive Details

- Spacious studio, one- and two-bedroom apartments
- Bright open floor plans
- Kitchen with refrigerator, stove, oven and microwave
- Thoughtfully-designed bathroom with roll-in shower and grab bar
- Individually controlled heat and central air conditioning
- In-home washer and dryer in select apartments

# Sample Floor Plans

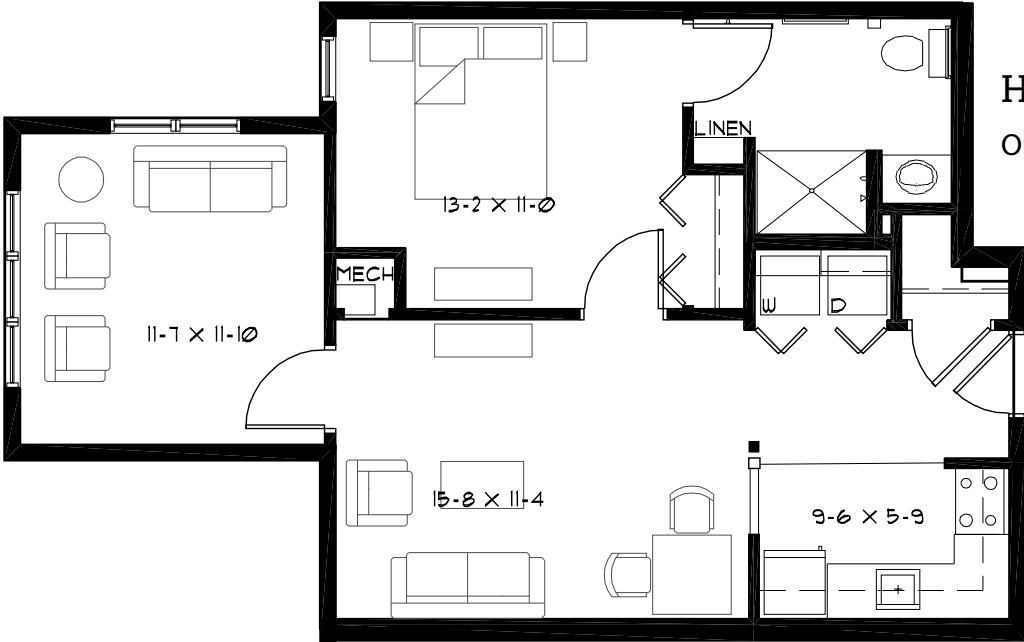
**Balsam**  
Studio | 450 Sq. Ft.



**Cedar**  
One Bedroom | 610 Sq. Ft.

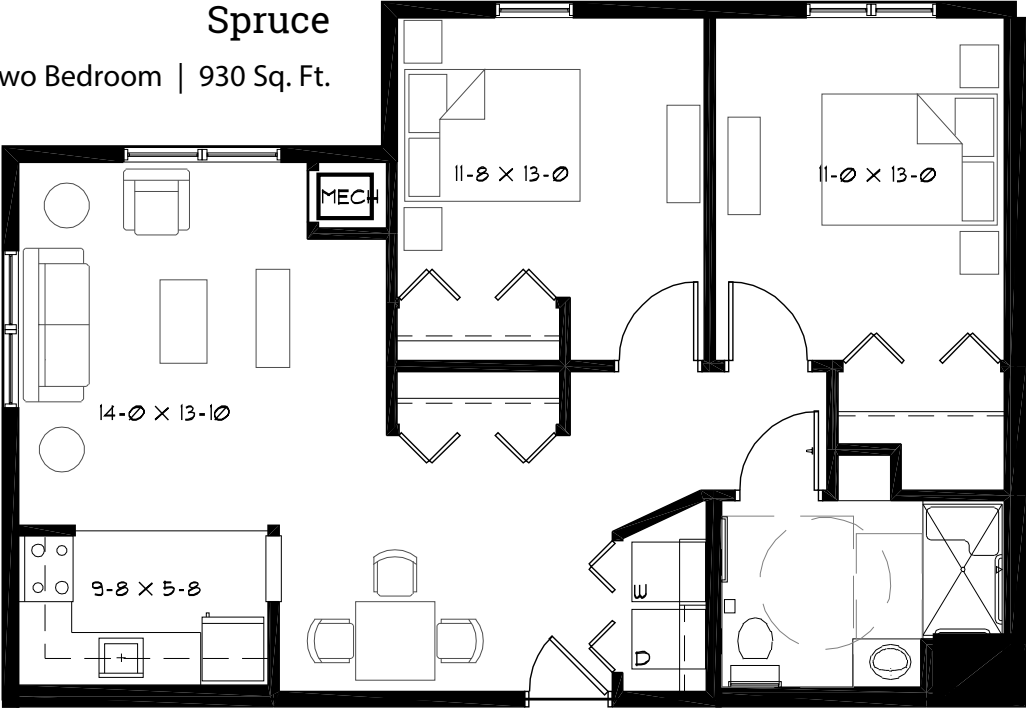
### Hemlock

One Bedroom/Den | 760 Sq. Ft.



### Spruce

Two Bedroom | 930 Sq. Ft.



Towner Crest  
Assisted Living  
262-468-2300

*Floor plans, features and amenities are subject to change without notice. Stated dimensions and square footage are approximate. Window placement may vary. Additional floor plans may be available. Please ask about availability.*



At Towner Crest, we know each individual is just that—an individual. And our services reflect that philosophy. Select from a broad range of options depending on your personal preferences. It's all based on the principle of choice.  
**And the choice is yours.**

## Monthly Personal Care Fee Ranges\*

Points from Assessment	Monthly Fee
0–9	Included in base rent
10–101	\$405–\$1,620
102–239	\$2,025–\$3,660
240–354	\$3,870–\$4,710
355–492	\$4,920–\$5,970

*\*The care fee ranges above are for estimating purposes only.*

## Included in Your Personal Care Fees:

- Initial and ongoing nursing assessments
- Scheduled nursing hours and on-call nursing available for staff consultation
- Nurse liaison with health care professionals
- Nurse scheduling of lab draws
- Nurse maintaining clinical record information
- Daily reassurance check
- Resident wellness monitoring

## Monthly Rental Fee

Apartment	Sq. Ft.	Rate
Studio	450	\$3,815
One Bedroom/ One Bedroom Plus	610–767	\$4,690–\$5,095
Two Bedroom	930	\$5,445

## Assisted Living Service Fees

In addition to the monthly rental fee, a monthly personal care fee for assisted living services is required based on the amount of care provided. The following steps help to assess your care needs and guide you through the residency process:

**Step 1: Reserve an apartment at Towner Crest.** We will help you through the reservation process and provide you with essential information in preparation for the following steps.

**Step 2: Schedule an assisted living care assessment appointment.** A nurse will meet with you to complete an initial assessment and help create a personalized care plan. The assessment will include a review of your individualized needs and a recommendation of services that could be provided to meet those needs. Each service is assigned a point value and the assessment will give you an estimated total number of points.\* To view the care assessment, scan the QR code or visit [TownerCrest.org](http://TownerCrest.org) and click on "Resident Documents."



**Step 3: Schedule a residency agreement appointment.** We will review the residency agreement, payment information and other resources with you. Once the residency agreement process is complete, your move-in date will be confirmed.

*Pricing subject to change. Residency agreement available upon request.*



**262-468-2300**

1205 E. Lisbon Road  
Oconomowoc, WI 53066

**TownerCrest.org**

## Living Options

- Senior apartments
- Assisted living apartments
- Memory care residences

*Due to COVID-19 or other future circumstance, some features may be temporarily unavailable or offered in a different way. We anticipate features will become available in original form once it is prudent to do so. Presbyterian Homes & Services (PHS) communities comply with applicable federal civil rights laws and do not discriminate on the basis of race, color, national origin, age, disability or sex.*

PresHomes.org

Español (Spanish): *Llame al 1-844-558-6125*

Hmoob (Hmong): *Hu rau 1-844-558-6125*

Tagalog (Filipino): *Tumawag sa 1-844-558-6125*

Professional management by PHS Management, LLC © 2021 Presbyterian Homes and Services  
All faiths welcome. Equal housing opportunity.

9/22 

 **presbyterian  
homes & services**  
*freedom to live well®*