



Highland Ridge

The Vista

Assisted Living

Welcome to Highland Ridge

For a setting that offers freedom combined with the comfort of knowing supportive services are available, choose The Vista assisted living.

Shape your daily life as you desire with the support of Liberty Personally Designed Living™, an innovative approach to personal care and assistance. Nicely appointed common areas are well-suited for group or casual gatherings, while social and recreational opportunities create a sense of community.

Included Amenities

- Escorts to meals and activities for first 7 days
- Continental breakfast
- Choice of two meals daily, restaurant style lunch and dinner
- Flexible dining hours
- Weekly light housekeeping and bi-weekly linen change
- Personal laundry (2 loads per week)
- Urgent call system
- 24 hour on-site Resident Assistant staffing
- Designated complimentary transportation to shopping, outings and medical appointments
- Social programs and events
- Pastoral care on-site
- Basic cable television service
- Open public Wi-Fi
- Utilities (heat, electric, central air conditioning, water, sewer, and trash)
- Access to Village Square and its wide range of community activities
- Priority access to other Presbyterian Homes & Services living and care options based on availability
- Smoke-free community
- Instructor led fitness classes
- Access to Kinze Wellness Center



Other Conveniences

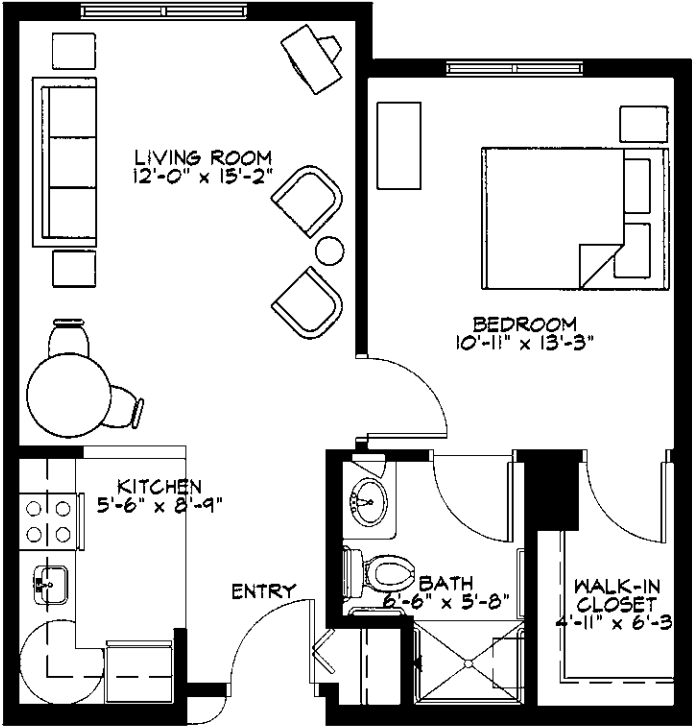
Additional fees may apply

- Telephone service
- Additional laundry service
- Transportation for specialty outings
- Assistance with arranging transportation to medical and social service appointments
- Assistance with accessing community resources and social services
- Second occupant, \$1,135 with no personal care package; \$1,565 with personal care package
- Third meal option
- Guest or individual dining
- Guest suite

Distinctive Details

- Bright open floor plans emphasize spacious rooms
- One and two bedroom apartments include kitchen with range and refrigerator
- Thoughtfully designed bathroom with elevated toilet, grab bar and roll-in shower
- Individually controlled heat and central air conditioning
- Blinds on all windows

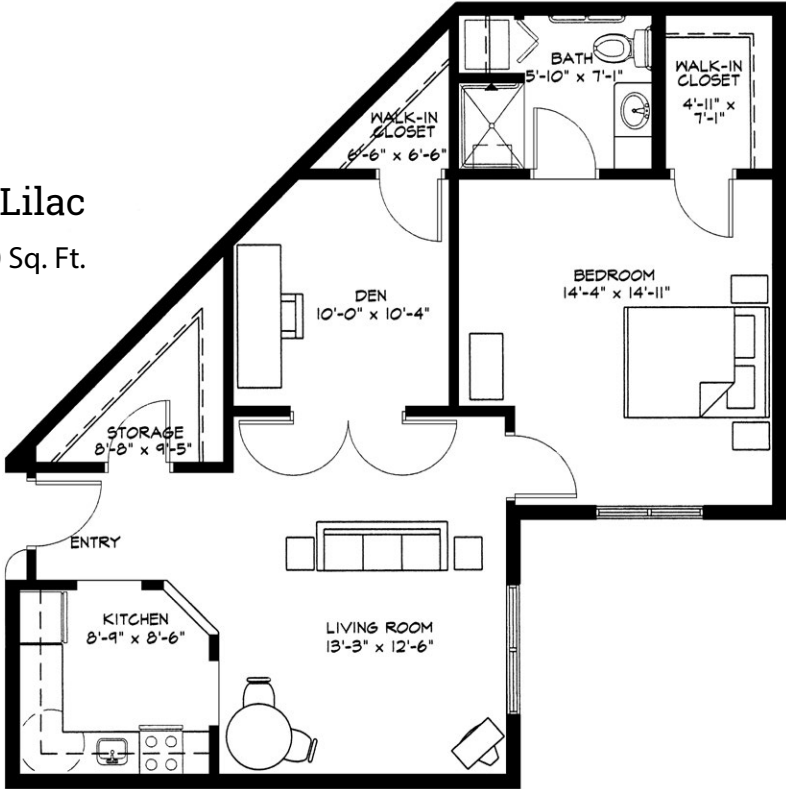
Sample Floor Plans



Jasmine

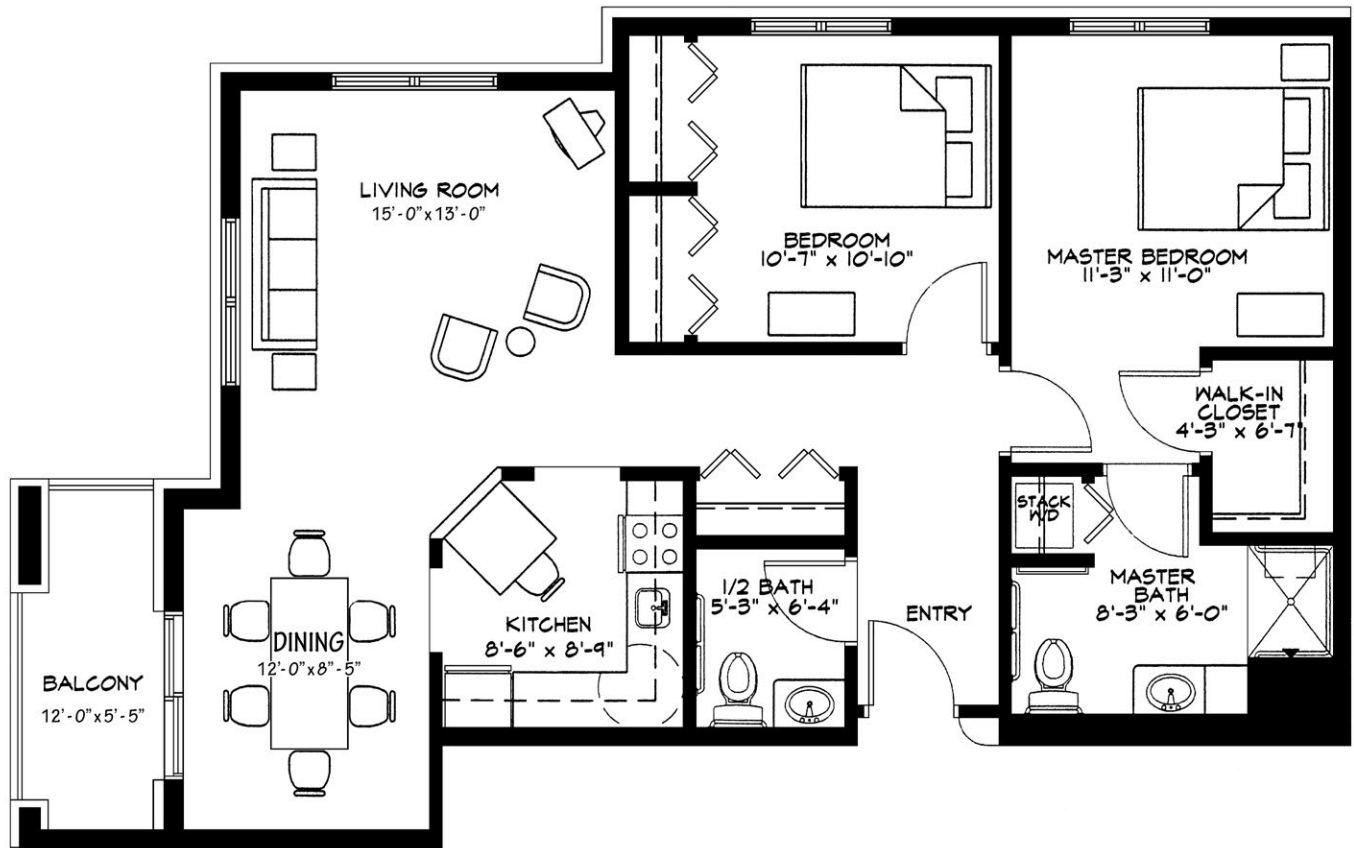
One Bedroom | 595 Sq. Ft.

Lilac
One Bedroom/Den | 910 Sq. Ft.



King Rose

Two Bedroom | 980 Sq. Ft.



Highland Ridge

Assisted Living
319-668-3800

Floor plans, features and amenities are subject to change without notice. Stated dimensions and square footage are approximate. Additional floor plans may be available. Please ask about availability. Some townhomes have finished basements.

At Highland Ridge, we know each individual is just that—an individual. And our services reflect that philosophy. Select from a broad range of options depending on your personal preferences. It's all based on the principle of choice. **And the choice is yours.**

Monthly Rental Fee

Apartment	Sq. Ft.	Rate
Suite	325	\$3,640
One Bedroom	595–1,060	\$4,210–\$4,935
Two Bedroom	980	\$5,000

Second occupant, \$1,135 with no personal care package; \$1,565 with personal care package.

Pricing subject to change. A \$2,000 reservation/damage deposit is required. Occupancy agreement available upon request.

Monthly Personal Care Fee Ranges*

Points from Assessment	Monthly Fee
0–32	Included in base rent
33–101	\$430–\$1,290
102–147	\$1,720–\$2,150
148–193	\$2,580–\$3,010
194–239	\$3,440–\$3,870

**The care fee ranges above are for estimating purposes only.*

Included in Your Personal Care Fees:

- Initial and ongoing nursing assessments
- Scheduled nursing hours and on-call nursing available for staff consultation
- Nurse liaison with health care professionals
- Nurse scheduling of lab draws
- Nurse maintaining clinical record information
- Daily reassurance check

Assisted Living Service Fees

In addition to the monthly rental fee, a monthly personal care fee for assisted living services is required based on the amount of care provided. The following steps help to assess your care needs and guide you through the residency process:

Step 1: Reserve an apartment at Highland Ridge. We will help you through the reservation process and provide you with essential information in preparation for the following steps.

Step 2: Schedule an assisted living care assessment appointment. A nurse will meet with you to complete an initial assessment and help create a personalized care plan. The assessment will include a review of your individualized needs and a recommendation of services that could be provided to meet those needs. Each service is assigned a point value and the assessment will give you an estimated total number of points.* To view the care assessment, scan the QR code or visit HighlandRidge.org and click on "Resident Documents."



Step 3: Schedule a residency agreement appointment. We will review the residency agreement, payment information and other resources with you. Once the residency agreement process is complete, your move-in date will be confirmed.



319-668-3800

100 Village View Circle
Williamsburg, IA 52361

HighlandRidge.org

Due to COVID-19 or other future circumstance, some features may be temporarily unavailable or offered in a different way. We anticipate features will become available in original form once it is prudent to do so. Presbyterian Homes & Services (PHS) communities comply with applicable federal civil rights laws and do not discriminate on the basis of race, color, national origin, age, disability or sex.

PresHomes.org

Español (Spanish): *Llame al 1-844-558-6125*

Hmoob (Hmong): *Hu rau 1-844-558-6125*

Tagalog (Filipino): *Tumawag sa 1-844-558-6125*

Professional management by PHS Management, LLC © 2021 Presbyterian Homes and Services
All faiths welcome. Equal housing opportunity.

Living Options

- Townhomes
- Senior apartments
- Assisted living apartments
- Skilled care center suites
- Care center suites
- Care center memory care suites

 **presbyterian
homes & services**
freedom to live well®