



Founders Ridge

The Brownstones

Row-style Homes

Welcome to Founders Ridge

At Founders Ridge, your ideal residence is complemented by an assortment of conveniences and amenities to enrich your life.

Enjoy maintenance-free living and comfortable, convenient floor plans. Regardless of which plan you choose, it's sure to reflect your sense of style as you add your own personal touch.

Included Amenities

- Utilities (heat, electric, central air conditioning, water, sewer, and trash)
- Telephone service
- Basic cable television service
- Open public Wi-Fi
- Continental breakfast 7 days/week (located on the main campus)
- Designated complimentary transportation to shopping and outings
- Wings® wellness intellectually stimulating programs, spiritual care services, group fitness classes, fitness center, volunteer opportunities
- Pastoral care
- Controlled entrance
- Lawn care and snow removal
- Property tax and building insurance
- Apartment and building maintenance
- Priority access to other Presbyterian Homes & Services living and care options based on availability
- Smoke-free community

Other Conveniences

Additional fees may apply

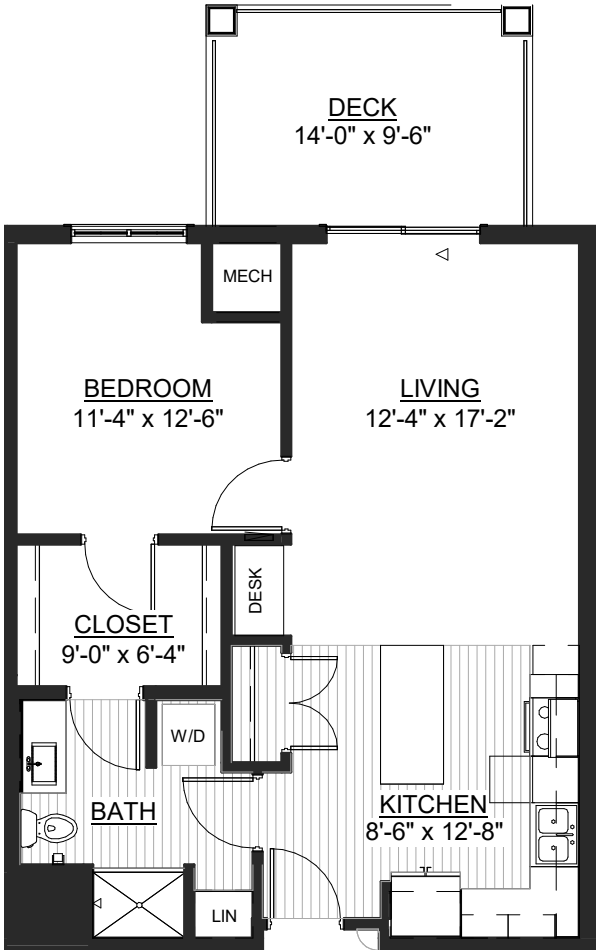
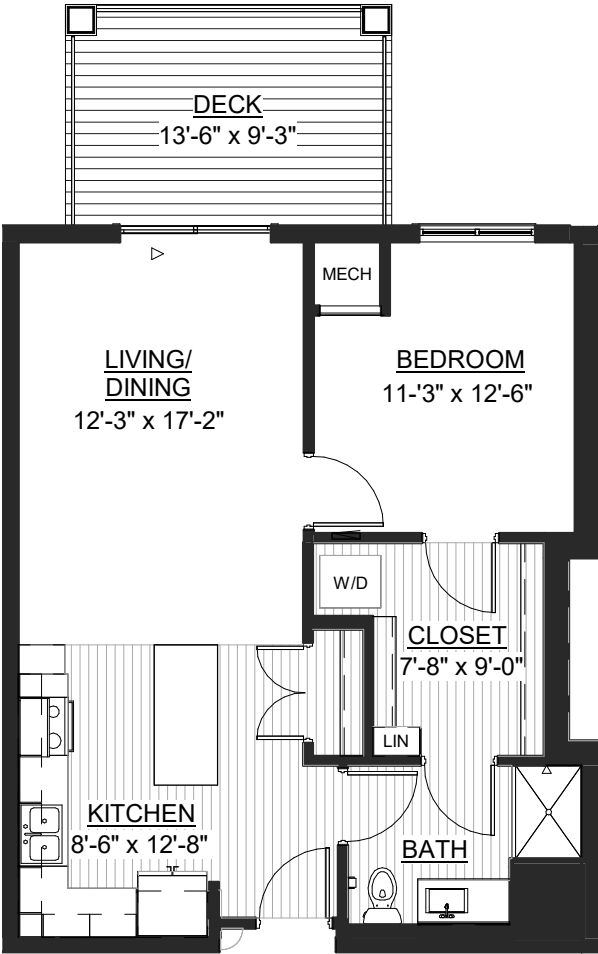
- Underground parking
- Restaurant-style dining (located on the main campus)
- Housekeeping
- Storage unit (based on availability)
- Guest dining
- Guest suite
- Community grill
- Pets are welcome (guidelines apply)
- Home care and hospice services available through Optage®
- Outpatient therapy — physical, occupational and speech therapy



Sample Floor Plans

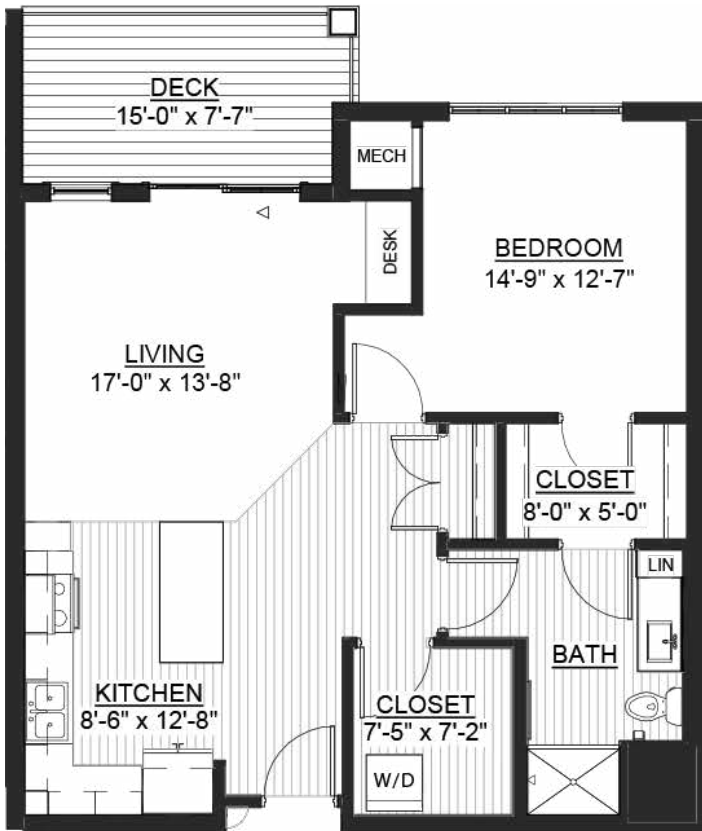
Anderson

One Bedroom | 756 Sq. Ft.



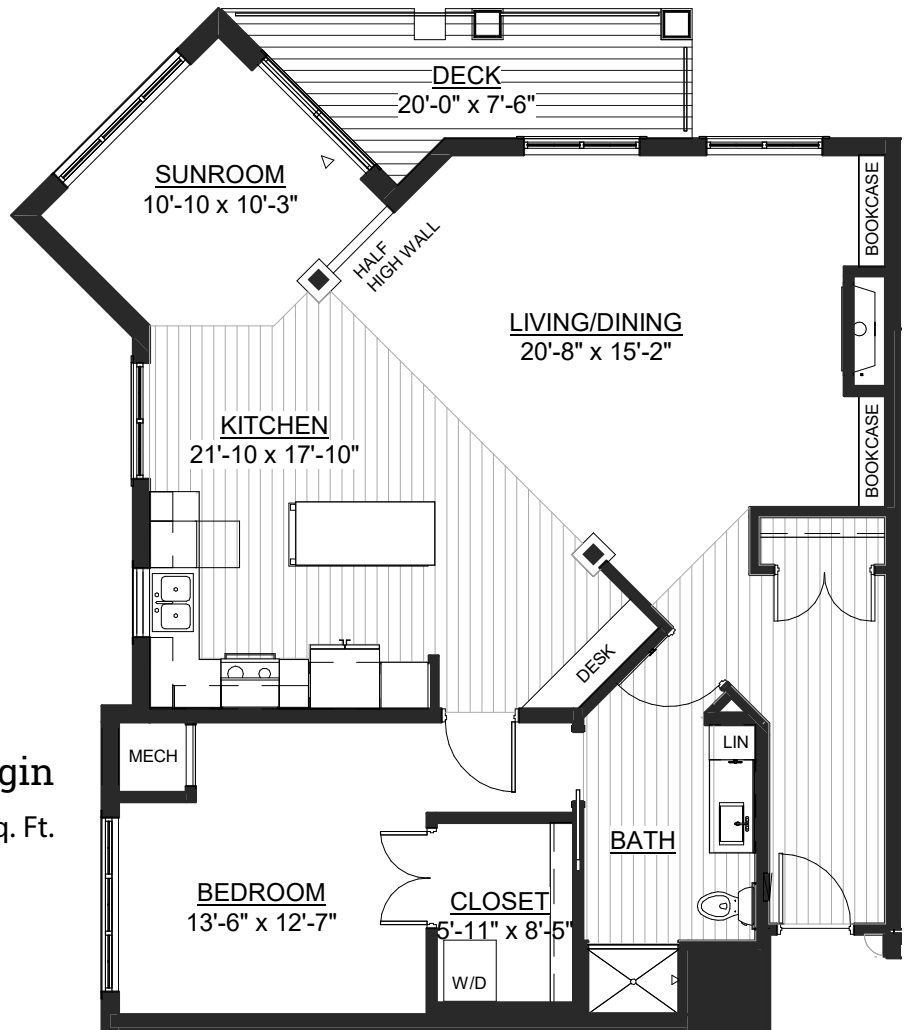
Breidenbach

One Bedroom | 768 Sq. Ft.



Dodgson

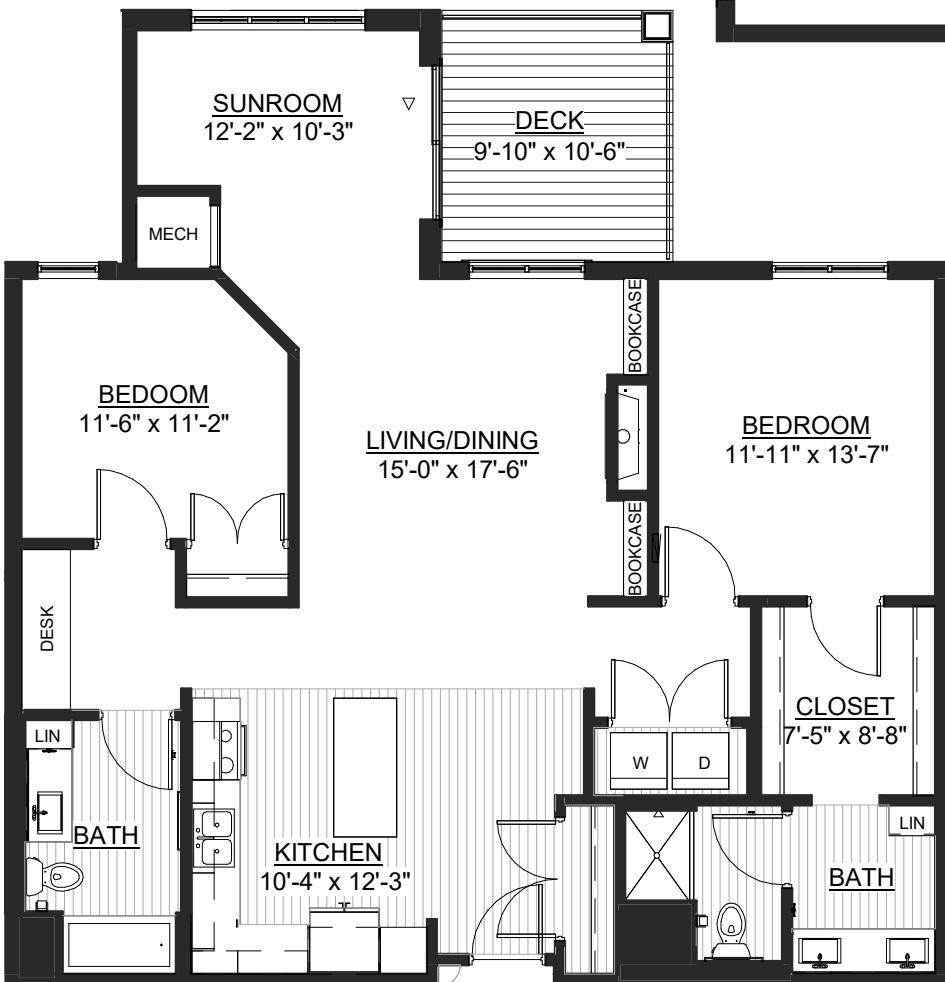
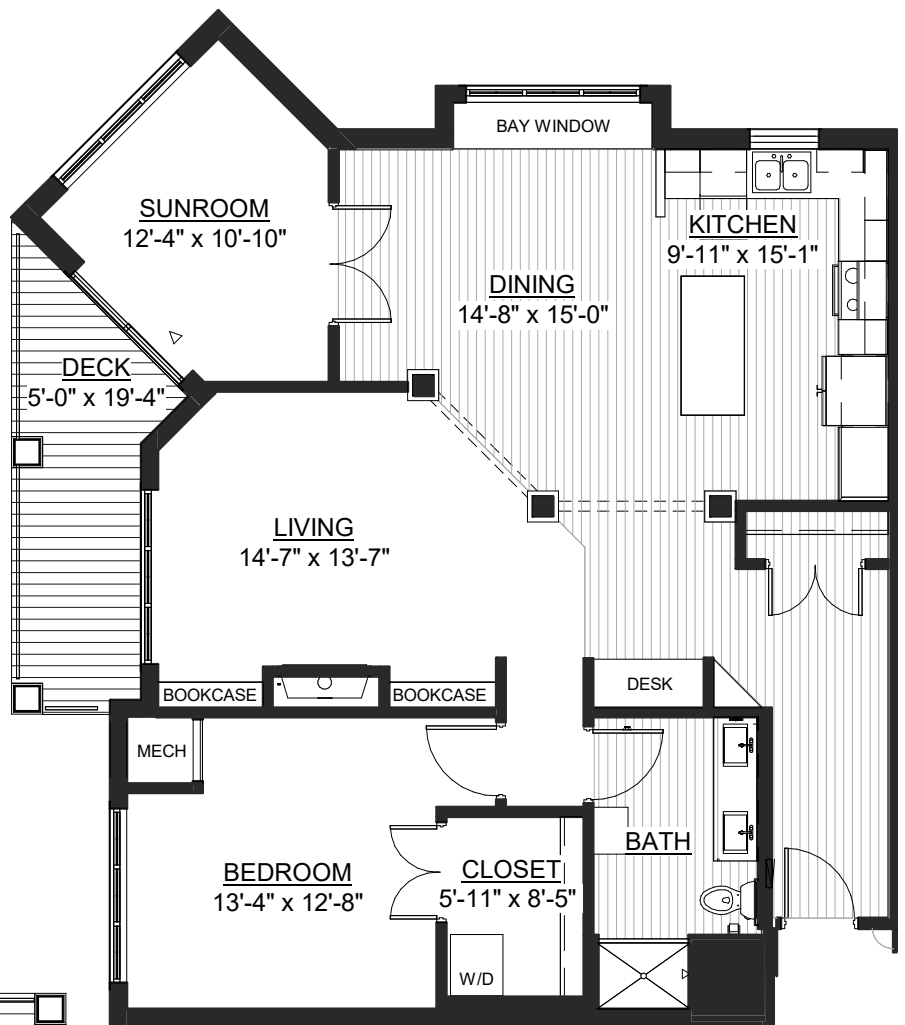
One Bedroom | 865 Sq. Ft.



Kagin

One Bedroom/Sunroom | 1,266 Sq. Ft.

Lindh
 One Bedroom/Sunroom
 1,281 Sq. Ft.



McKnight
 Two Bedroom/Sunroom
 1,376 Sq. Ft.



West

Two Bedroom/Sunroom | 1,794 Sq. Ft.

Floor plans, features and amenities are subject to change without notice. Stated dimensions and square footage are approximate. Additional floor plans may be available. Please ask about availability.

Reminiscent of historic row-style homes, the Brownstones feature one and two bedroom floor plans to blend gracious design and inviting style. This exceptional living option provides you with privacy, independence, and the freedom to pursue a life limited only by the number of hours in a day.

Distinctive Details

- Bright open floor plans emphasize spacious rooms with nine foot ceilings
- Refrigerator, stove/self-cleaning oven, dishwasher, microwave and garbage disposal
- Convenient in-home laundry with washer and dryer
- Blinds on all windows and patio doors
- Individually controlled heat and central air conditioning
- Walk-in storage in most apartments
- Private deck or patio on most apartments

Monthly Rental Fee

Apartment	Sq. Ft.	Rate	Entrance Deposit
One Bedroom	756–865	\$2,085–\$2,360	\$45,360–\$51,900
One Bedroom/Sunroom	1,266–1,281	\$3,425–\$3,470	\$75,960–\$76,860
Two Bedroom/Sunroom	1,376–1,794	\$3,585–\$4,645	\$82,560–\$107,640

The entrance deposit essentially reduces the monthly fee and is 100% refundable.



Pricing subject to change. Residency agreement available upon request.



952-946-2000

6600 Auto Club Road
Bloomington, MN 55438

FoundersRidgePHS.org

Due to COVID-19 or other future circumstance, some features may be temporarily unavailable or offered in a different way. We anticipate features will become available in original form once it is prudent to do so. Presbyterian Homes & Services (PHS) communities comply with applicable federal civil rights laws and do not discriminate on the basis of race, color, national origin, age, disability or sex.

PresHomes.org

Español (Spanish): *Llame al 1-844-558-6125*

Hmoob (Hmong): *Hu rau 1-844-558-6125*

Tagalog (Filipino): *Tumawag sa 1-844-558-6125*

Professional management by PHS Management, LLC © 2021 Presbyterian Homes and Services
All faiths welcome. Equal housing opportunity.

Living Options

- Brownstones
- Senior apartments
- Assisted living apartments
- Enhanced assisted living
- Assisted living memory care residence

 **presbyterian
homes & services**
freedom to live well®