



# GracePointe Crossing

The Terrace

Senior Apartments

# Welcome to GracePointe Crossing

At GracePointe Crossing, your ideal residence is complemented by an assortment of conveniences and amenities to enrich your life.

Enjoy maintenance-free living and comfortable, convenient floor plans. Regardless of which plan you choose, it's sure to reflect your sense of style as you add your own personal touch.

---

## Included Amenities

- Utilities (heat, electric, air conditioning, water, sewer and trash)
- Telephone service
- Basic cable television service
- Open public Wi-Fi
- Pastoral care
- Wings® wellness intellectually stimulating programs, spiritual care services, group fitness classes, fitness center, volunteer opportunities
- Designated complimentary transportation to shopping and outings
- Controlled entrance
- Month-to-month residency agreement
- Property tax and building insurance
- Apartment and building maintenance
- Lawn care and snow removal
- Priority access to other GracePointe Crossing and Presbyterian Homes & Services living and care options based on availability
- Smoke-free community

## Other Conveniences

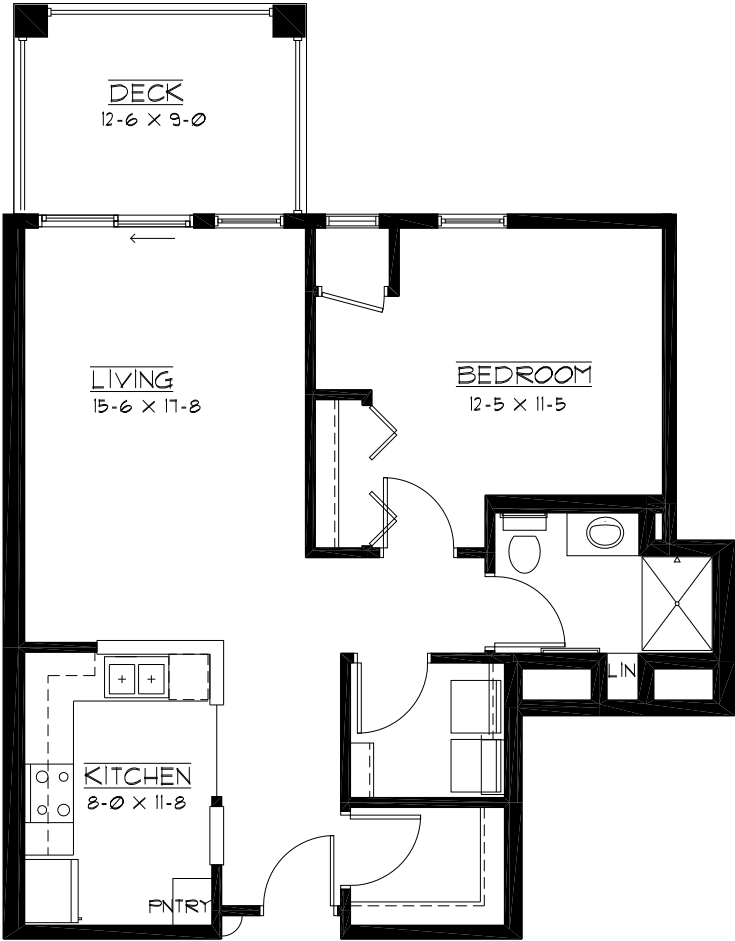
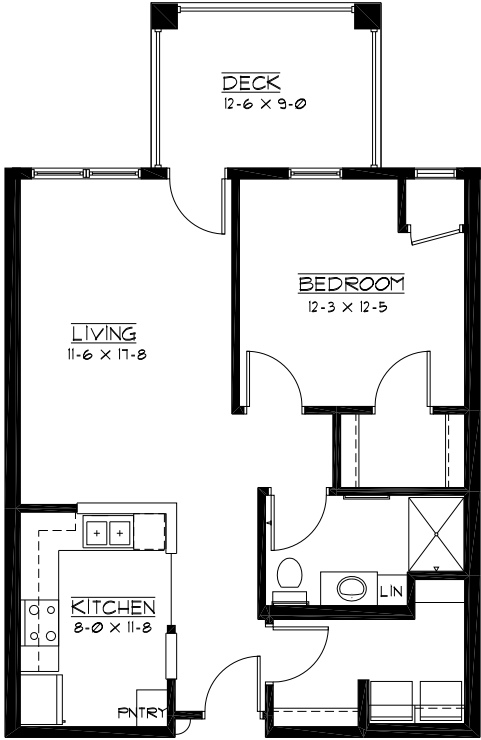
*Additional fees may apply*

- Underground heated parking
- Restaurant-style dining
- Private storage unit
- Housekeeping
- Transportation for shopping and outings
- On-site banking services
- Guest suite
- Pets are welcome (guidelines apply)
- Outpatient therapy — physical, occupational and speech therapy



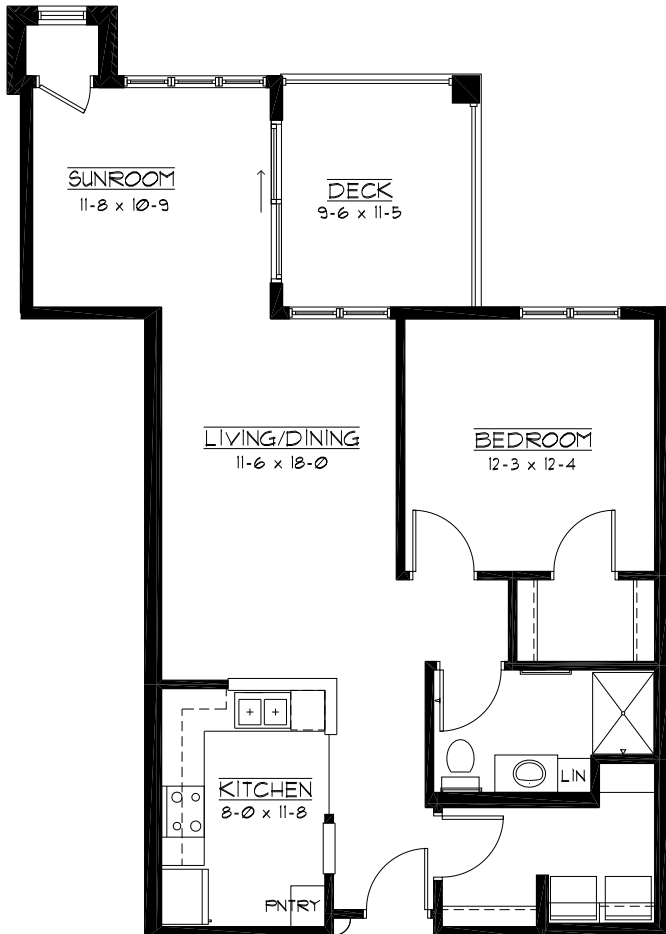
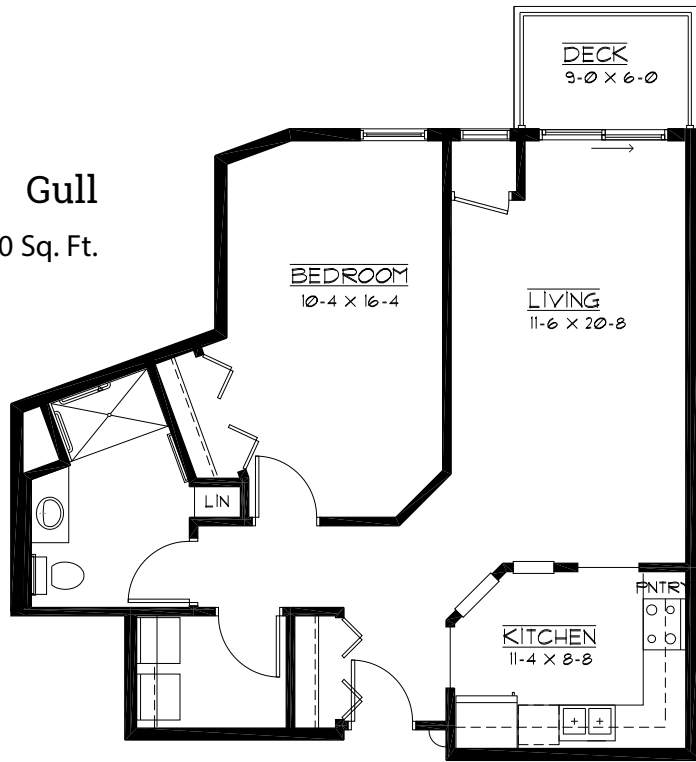
# Sample Floor Plans

**Cannon**  
One Bedroom | 765 Sq. Ft.

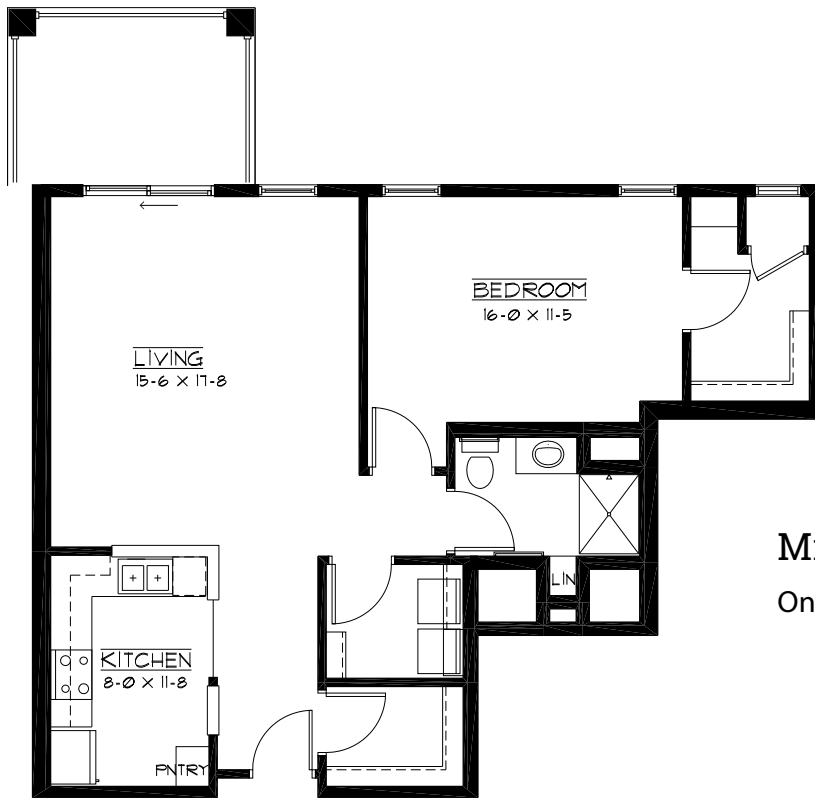


**Cloquet**  
One Bedroom | 790 Sq. Ft.

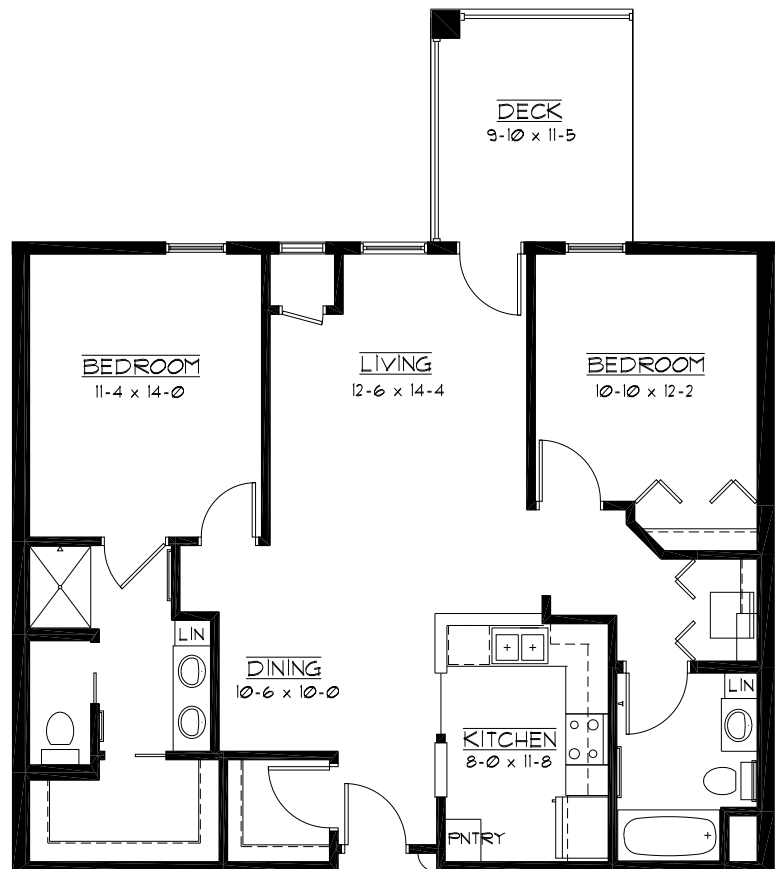
**Gull**  
One Bedroom Accessible | 850 Sq. Ft.



**Kettle**  
One Bedroom/Sunroom | 925 Sq. Ft.



**Minnesota**  
 One Bedroom | 970 Sq. Ft.

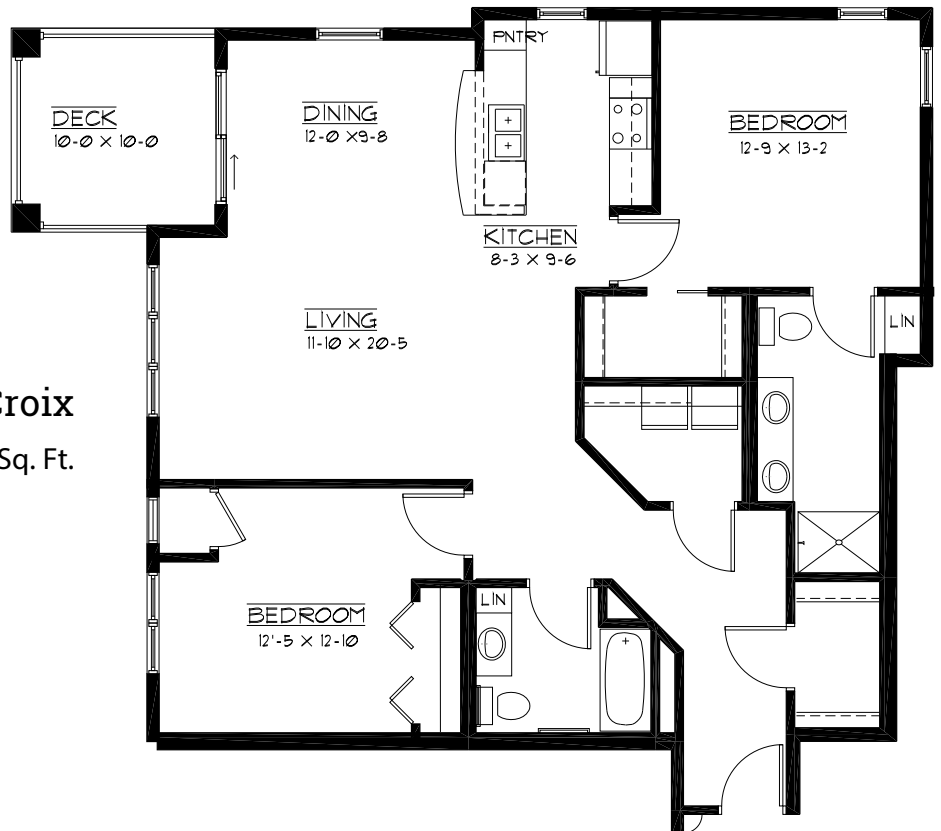


**Mississippi**  
 Two Bedroom | 1,120 Sq. Ft.



### Otter Tail

Two Bedroom | 1,255 Sq. Ft.



### St. Croix

Two Bedroom | 1,295 Sq. Ft.

*Floor plans, features and amenities are subject to change without notice. Stated dimensions and square footage are approximate. Additional floor plans may be available. Please ask about availability.*

Our senior apartments offer maintenance-free living and comfortable floor plans with value and convenience. Nicely appointed common areas are well-suited for group events and casual gatherings. Social, recreational and volunteer opportunities help create a sense of community.

## Distinctive Details

- Bright open floor plans emphasize spacious rooms with nine foot ceilings
- Fully equipped kitchen with refrigerator, stove/self cleaning oven, dishwasher, microwave and garbage disposal
- Individually-controlled heat and air conditioning
- Walk-in storage in most apartments
- Convenient in-home laundry with full size washer and dryer
- Private patio or balcony
- Blinds on all windows and patio door
- Thoughtfully designed bathroom with step-in shower and/or tub and shower

## Monthly Rental Fee

Apartment	Sq. Ft.	Rate
One Bedroom	765-925	\$2,085-\$2,505
Two Bedroom	1,120-1,295	\$2,805-\$3,315



*Pricing subject to change. Residency agreement available upon request.*



**763-689-1474**

1545 River Hills Parkway NW  
Cambridge, MN 55008

[GracePointeCrossing.org](http://GracePointeCrossing.org)

*Due to COVID-19 or other future circumstance, some features may be temporarily unavailable or offered in a different way. We anticipate features will become available in original form once it is prudent to do so. Presbyterian Homes & Services (PHS) communities comply with applicable federal civil rights laws and do not discriminate on the basis of race, color, national origin, age, disability or sex.*

[PresHomes.org](http://PresHomes.org)

Español (Spanish): *Llame al 1-844-558-6125*

Hmoob (Hmong): *Hu rau 1-844-558-6125*

Tagalog (Filipino): *Tumawag sa 1-844-558-6125*

Professional management by PHS Management, LLC © 2021 Presbyterian Homes and Services  
All faiths welcome. Equal housing opportunity.

## Living Options

- Townhomes
- Senior apartments
- Assisted living apartments
- Assisted living memory care residence
- Care center
- Care center memory care

 **presbyterian  
homes & services**  
*freedom to live well®*