

The Terrace

SENIOR APARTMENTS



HEARTWOOD
A SENIOR LIVING COMMUNITY

WELCOME TO HEARTWOOD

At Heartwood, your ideal residence is complemented by an assortment of conveniences and amenities to enrich your life.

Enjoy maintenance-free living and comfortable, convenient floor plans. Regardless of which plan you choose, it's sure to reflect your sense of style as you add your own personal touch.

INCLUDED AMENITIES

- Utilities (heat, electric, central air conditioning, water, sewer and trash)
- Telephone service
- Basic cable television service
- Social programs and events
- Pastoral care
- Designated complimentary transportation to shopping and outings
- Controlled entrance
- Health and wellness clinic
- Lawn care and snow removal
- Apartment and building maintenance
- Monitored smoke detector
- Month-to-month residency agreement
- Priority access to other Cuyuna Regional Medical Care Center and Presbyterian Homes & Services living and care options based on availability
- Smoke-free community

OTHER CONVENIENCES

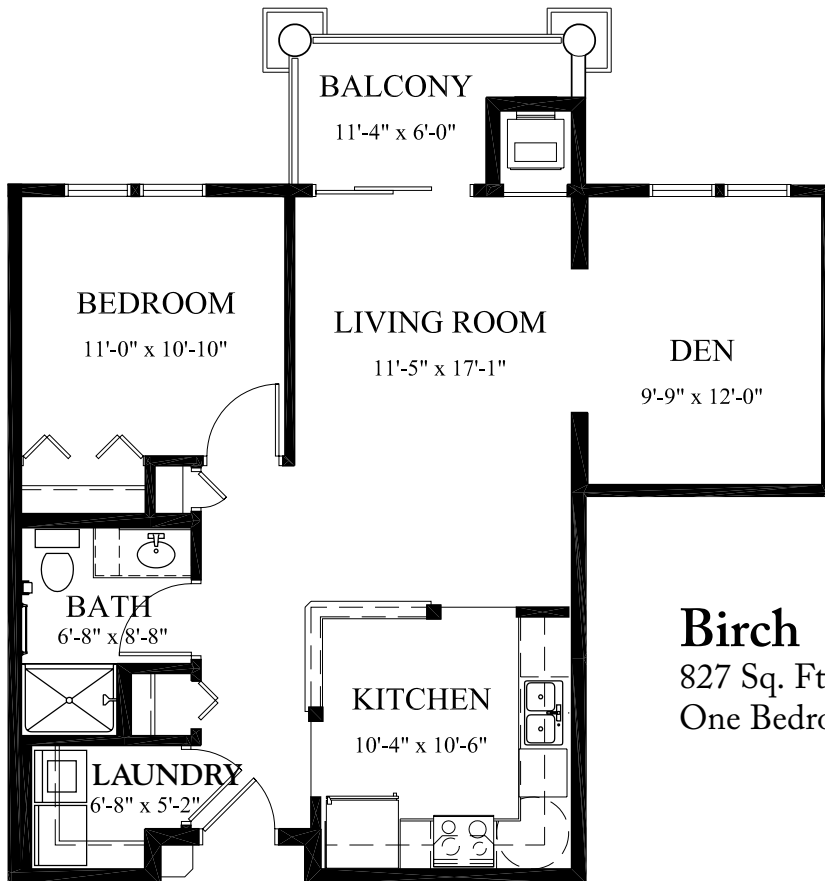
Additional fees may apply

- Restaurant-style dining
- Underground heated parking and car wash bay
- Additional storage
- Transportation for shopping and outings
- Housekeeping
- Guest dining
- Guest suites
- On-site laboratory services
- Pharmacy delivery
- Pets are welcome (guidelines apply)



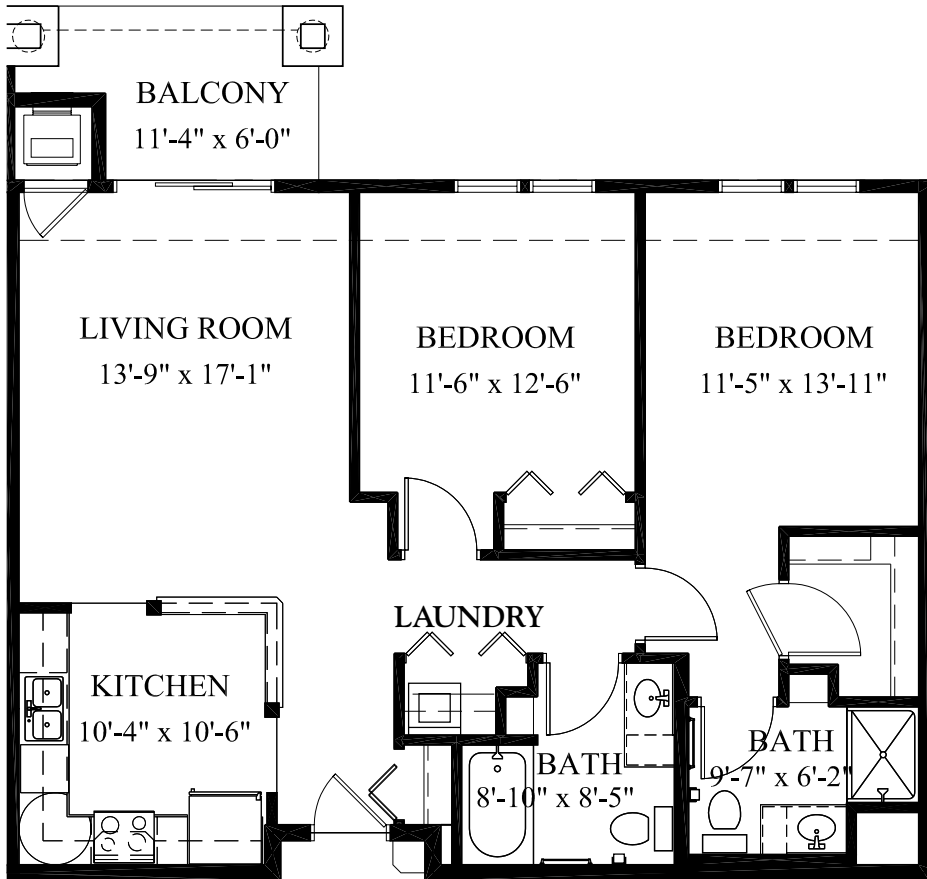
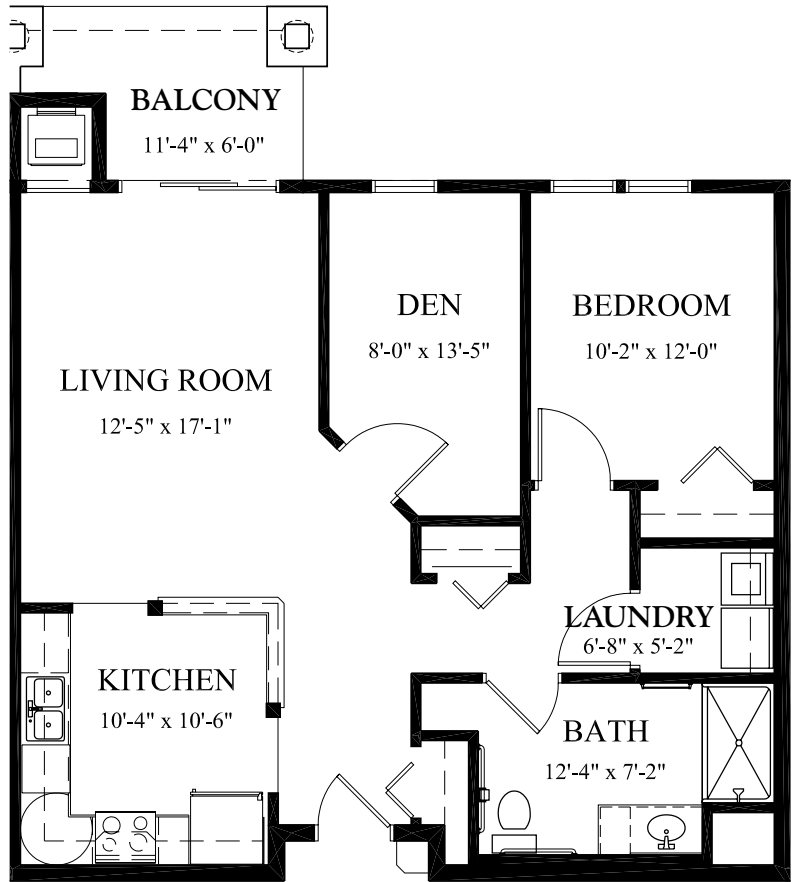
SAMPLE FLOOR PLANS

Alder
700 Sq. Ft.
One Bedroom



Birch
827 Sq. Ft.
One Bedroom/Den

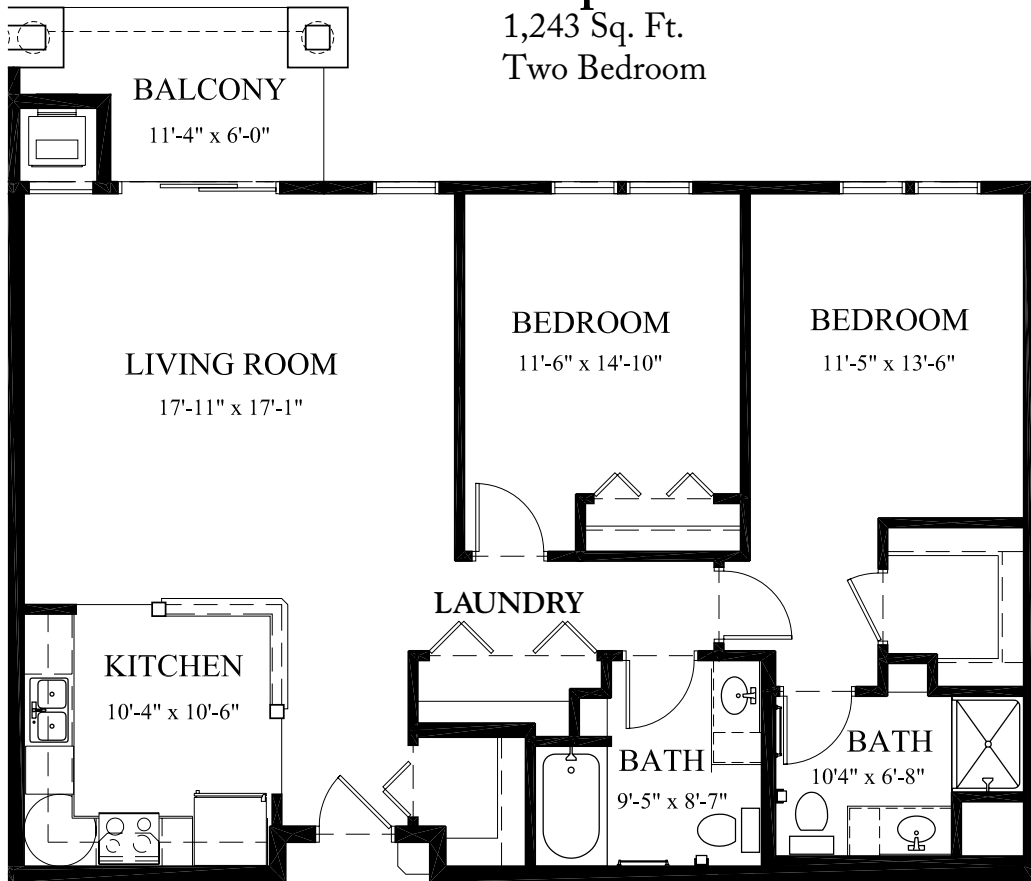
Elm
 945 Sq. Ft.
 One Bedroom/Den



Linden
 1,123 Sq. Ft.
 Two Bedroom

Maple

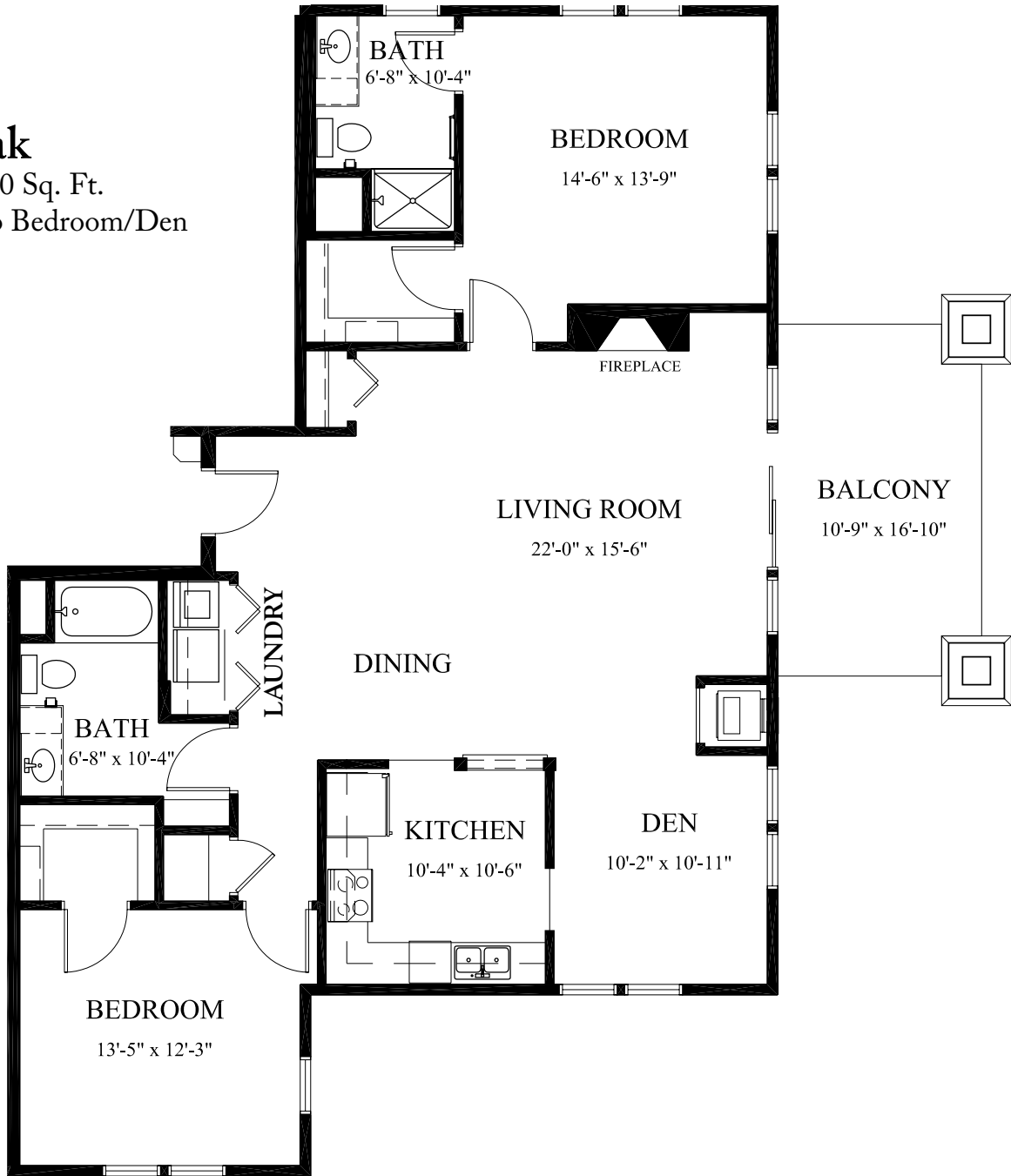
1,243 Sq. Ft.
Two Bedroom



Oak

1,550 Sq. Ft.

Two Bedroom/Den



Floor plans, features and amenities are subject to change without notice. Stated dimensions and square footage are approximate. Additional floor plans may be available. Please ask about availability.

Our senior apartments offer maintenance-free living and comfortable floor plans with value and convenience. Nicely appointed common areas are well-suited for group events and casual gatherings. Social, recreational and volunteer opportunities help create a sense of community.

DISTINCTIVE DETAILS

- Bright open floor plans emphasize spacious rooms with nine foot ceilings
- Refrigerator, stove/self-cleaning oven, dishwasher and microwave
- Convenient in-home laundry with washer and dryer
- Patio or balcony
- Blinds on all windows
- Individually controlled heat and central air conditioning
- Bathroom with step-in shower and grab bar
- Gas fireplace and walk-in closets in select apartments

MONTHLY RENTAL FEE

APARTMENT	SQ. FT.	ENTRANCE DEPOSIT	RATE
One Bedroom	700*-945	\$23,625	\$1,690-\$2,185
Two Bedroom	1,123-1,550	\$28,075-\$38,750	\$2,610-\$3,575

*Income guidelines apply. The entrance deposit essentially reduces the monthly fee and is 100% refundable.

Pricing subject to change. Residency agreement available upon request.





Heartwood is a non-profit senior living community rooted in the shared vision of its two founding organizations, Cuyuna Regional Medical Center and Presbyterian Homes & Services. Both have a decades-rich history of providing progressive, personal care and promoting all aspects of health and well-being for those they serve.

218-545-8500

500 Heartwood Drive
Crosby, MN 56441

HeartwoodLiving.org

Due to COVID-19 or other future circumstance, some features may be temporarily unavailable or offered in a different way. We anticipate features will become available in original form once it is prudent to do so. Presbyterian Homes & Services (PHS) communities comply with applicable federal civil rights laws and do not discriminate on the basis of race, color, national origin, age, disability or sex.

PresHomes.org

Español (Spanish): Llame al 1-844-558-6125

Hmoob (Hmong): Hu rau 1-844-558-6125

Tagalog (Filipino): Tumawag sa 1-844-558-6125

Professional management by PHS Management, LLC © 2021 Presbyterian Homes and Services
All faiths welcome. Equal housing opportunity.

LIVING OPTIONS

- Terrace senior apartments
- Commons assisted living apartments
- Arbor assisted living memory care residence
- Hallett Cottages assisted living memory care

