

Commons

Assisted Living



Welcome to Lexington Landing

For a setting that offers freedom combined with the comfort of knowing supportive services are available, choose the Commons assisted living.

Shape your daily life as you desire with the support of Liberty Personally Designed Living™, an innovative approach to personal care and assistance. Nicely appointed common areas are well-suited for group or casual gatherings, while social and recreational opportunities create a sense of community.

Included Amenities

- Utilities (heat, electric, central air conditioning, water, sewer, trash)
- Continental breakfast 7 days/week
- Choice of two meals daily, with flexible dining hours
- Escorts to meals and activities for first 5 days
- Weekly light housekeeping and linen change
- Basic cable television service
- Open public Wi-Fi
- Telephone service
- Wings® Wellness: intellectually stimulating programs, spiritual care services, group fitness classes, fitness center, volunteer opportunities
- Controlled entrance
- Designated complimentary transportation to shopping and outings
- Apartment and building maintenance
- Smoke-free community
- Equipped with pathogen-reducing air purification technology in targeted common areas
- Month-to-month residency agreement
- Urgent call system
- 24-hour on-site resident assistant staffing
- Preferred access to Presbyterian Homes & Services living and care options based on availability (guidelines apply)



Other Conveniences

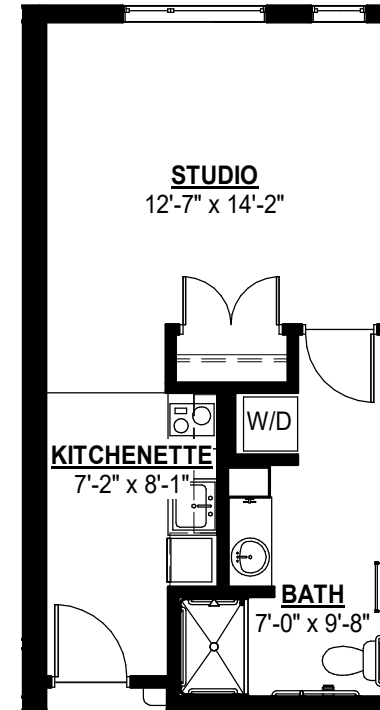
Additional fees may apply

- Assistance with arranging transportation to medical and social service appointments
- Assistance with accessing community resources and social services
- Access to designated Physician or Nurse Practitioner for on-site services
- Coordination of specialized nursing and therapy visits
- Response to urgent calls
- Third meal option
- Underground parking
- Storage unit
- Internet
- Upgrade cable television packages
- Additional home care and hospice services available through Optage®
- Second occupant, \$800 plus personal care
- Additional housekeeping
- Laundry service
- Transportation for shopping and outings
- Guest dining
- Guest suites
- Pets are welcome (guidelines apply)
- Outpatient therapy — physical, occupational and speech therapy

Distinctive Details

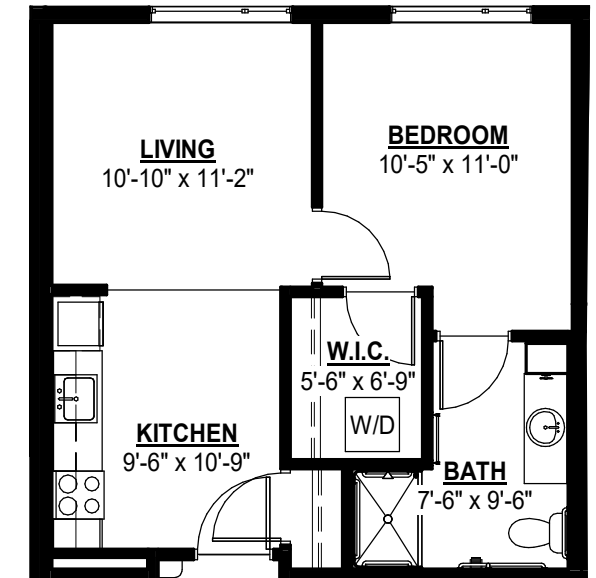
- Bright open floor plans emphasize spacious rooms with nine foot ceilings
- Fully equipped kitchen with refrigerator, stove/oven and microwave
- Bathroom with elevated toilet, grab bars and roll-in shower
- Blinds on all windows
- Individually controlled heat and central air conditioning
- Convenient in-home laundry with washer and dryer in most apartments

Sample Floor Plans



Cleveland

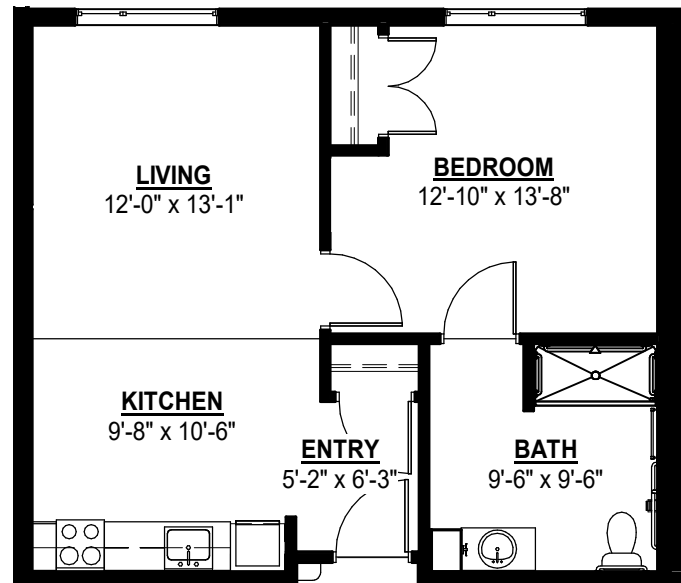
435 Sq. Ft.
Studio



Yorkshire

534 Sq. Ft.
One Bedroom

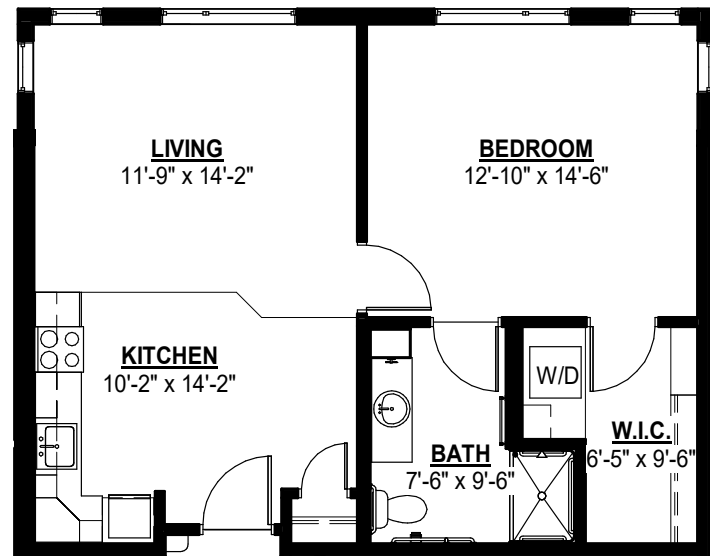
Floor plans, features and amenities are subject to change without notice. Stated dimensions and square footage are approximate. Additional floor plans may be available. Please ask about availability.



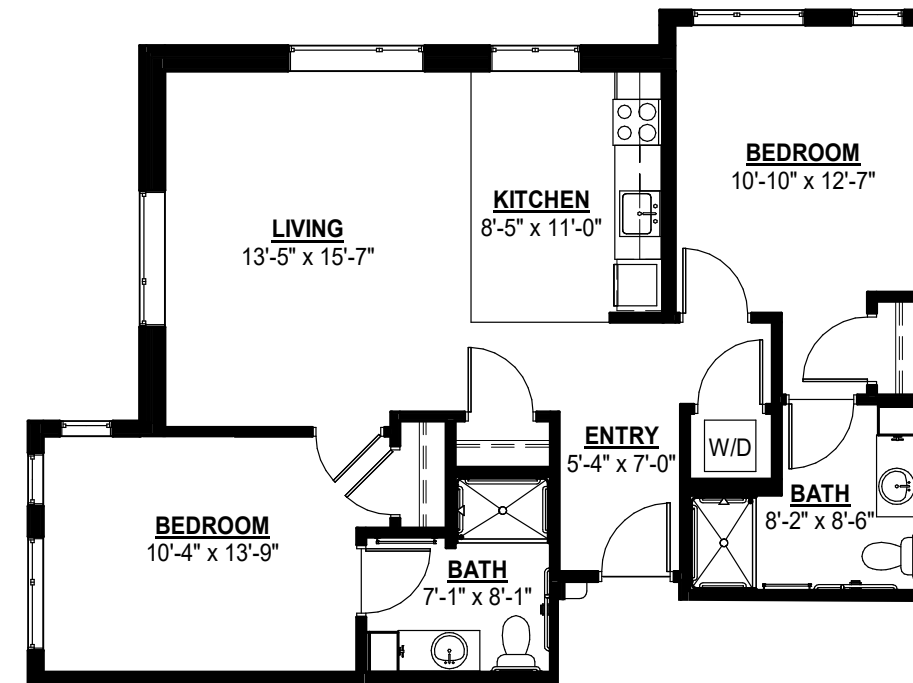
Shephard
639 Sq. Ft.
One Bedroom



Randolph
795 Sq. Ft.
One Bedroom

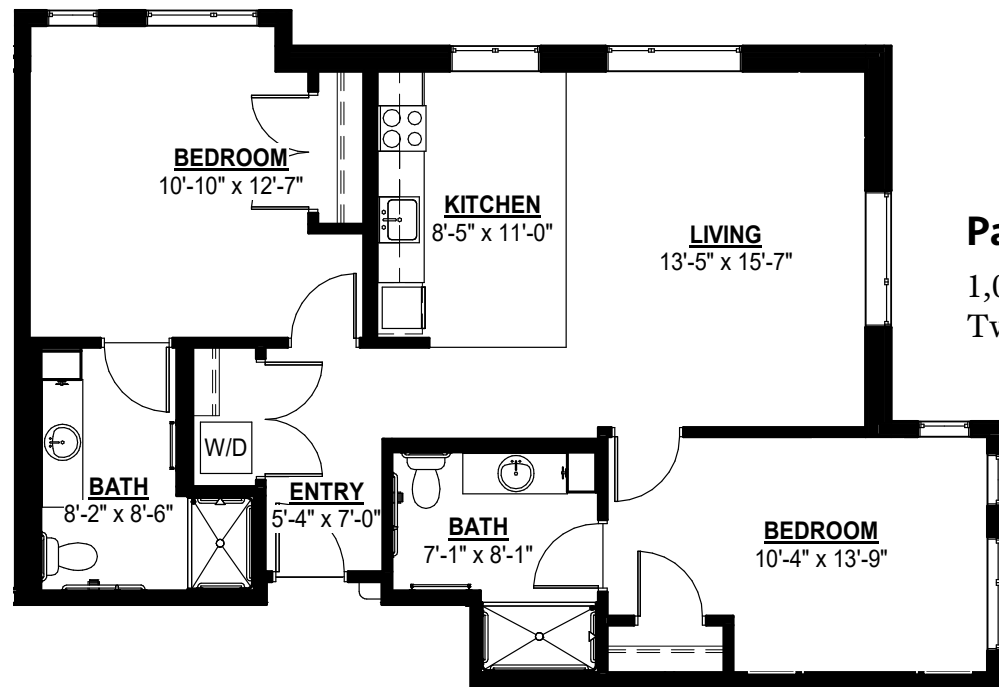


Hartford
710 Sq. Ft.
One Bedroom

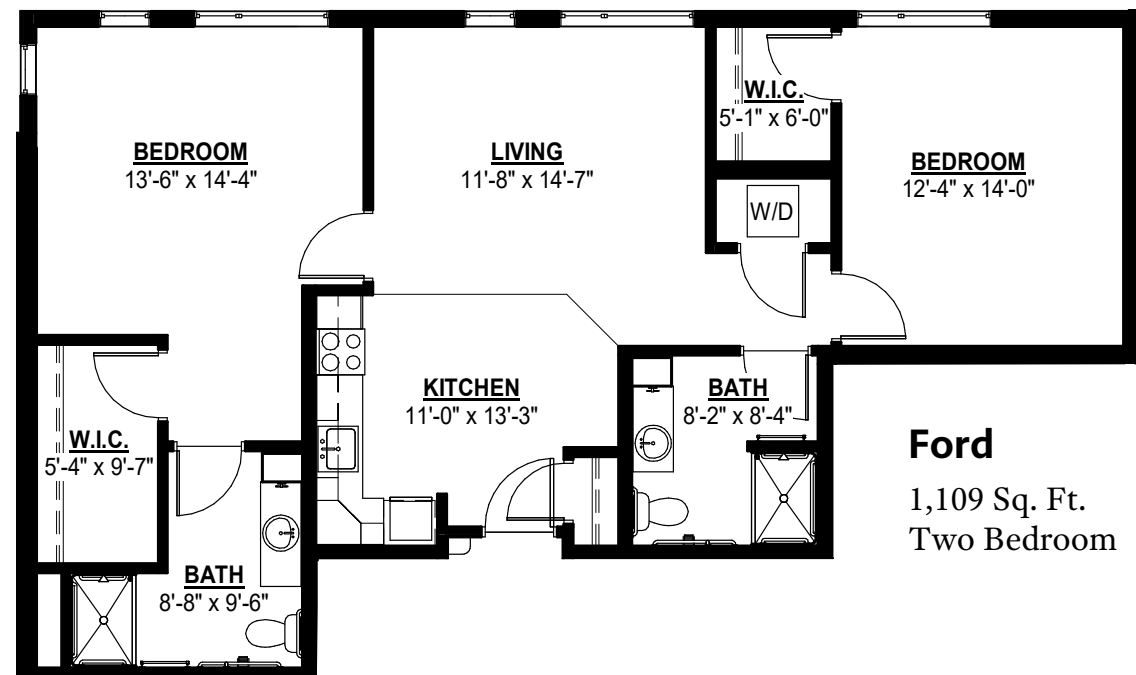


Juliet
963 Sq. Ft.
Two Bedroom





Palace
1,050 Sq. Ft.
Two Bedroom



Ford
1,109 Sq. Ft.
Two Bedroom

At Lexington Landing, we know each individual is just that—an individual. And our services reflect that philosophy. Select from a broad range of options depending on your personal preferences. It's all based on the principle of choice. And the choice is yours.

Monthly Rental Fee

Apartment	Sq. Ft.	Rate
Studio	435	\$4,000
One Bedroom	534-795	\$4,200-\$4,785
Two Bedroom	963-1,109	\$4,970-\$5,245

Assisted Living Service Fees

In addition to the monthly rental fee, a monthly personal care fee for assisted living services is required based on the amount of care provided. The following steps help to assess your care needs and guide you through the residency process:

Step 1: Reserve an apartment at Lexington Landing. We will help you through the reservation process and provide you with essential information in preparation for the following steps.

Step 2: Schedule an assisted living care assessment appointment. A nurse will meet with you to complete an initial assessment and help create a personalized care plan. The assessment will include a review of your individualized needs and a recommendation of services that could be provided to meet those needs. Each service is assigned a point value and the assessment will give you an estimated total number of points.* To view the care assessment, scan the QR code or visit LexingtonLanding.org and click on "Resident Documents."



Step 3: Schedule a residency agreement appointment. We will review the residency agreement, payment information and other resources with you. Once the residency agreement process is complete, your move-in date will be confirmed.

Monthly Personal Care Fee Ranges*

Points from Assessment	Monthly Fee
0-9	\$460 (required)
10-101	\$920-\$2,300
102-239	\$2,760-\$4,560
240-354	\$4,770-\$5,610
355-492	\$5,820-\$6,870

*The care fee ranges above are for estimating purposes only.

Included in Your Personal Care Fees:

- Initial and ongoing nursing assessments
- Scheduled nursing hours and on-call nursing available for staff consultation
- Nurse liaison with health care professionals
- Nurse scheduling of lab draws
- Nurse maintaining clinical record information
- Daily reassurance check

Pricing subject to change. Residency agreement available upon request.



The mission of the J. A. Wedum Foundation is to develop and utilize their resources to positively change and improve people's lives in the spirit of stewardship and generosity. Lexington Landing is one example of how we provide opportunities for people to live life to the fullest.

Living Options

- Senior apartments
- Assisted living apartments
- Assisted living memory care residence

651-695-6400

900 Old Lexington Avenue
Saint Paul, MN 55116

LexingtonLanding.org

All faiths welcome.
Equal housing opportunity.



Due to COVID-19 or other future circumstance, some features may be temporarily unavailable or offered in a different way. We anticipate features will become available in original form once it is prudent to do so. Presbyterian Homes & Services (PHS) communities comply with applicable federal civil rights laws and do not discriminate on the basis of race, color, national origin, age, disability or sex. **PresHomes.org**

Español (Spanish): Llame al 1-844-558-6125
Hmoob (Hmong): Hu rau 1-844-558-6125
Tagalog (Tagalog - Filipino): Tumawag sa 1-844-558-6125

Owned by the J. A. Wedum Foundation. Professional management by PHS Management, LLC. Optage® is a registered trademark of Presbyterian Homes and Services. ©2019 Presbyterian Homes and Services.