

Terrace II

Senior Apartments



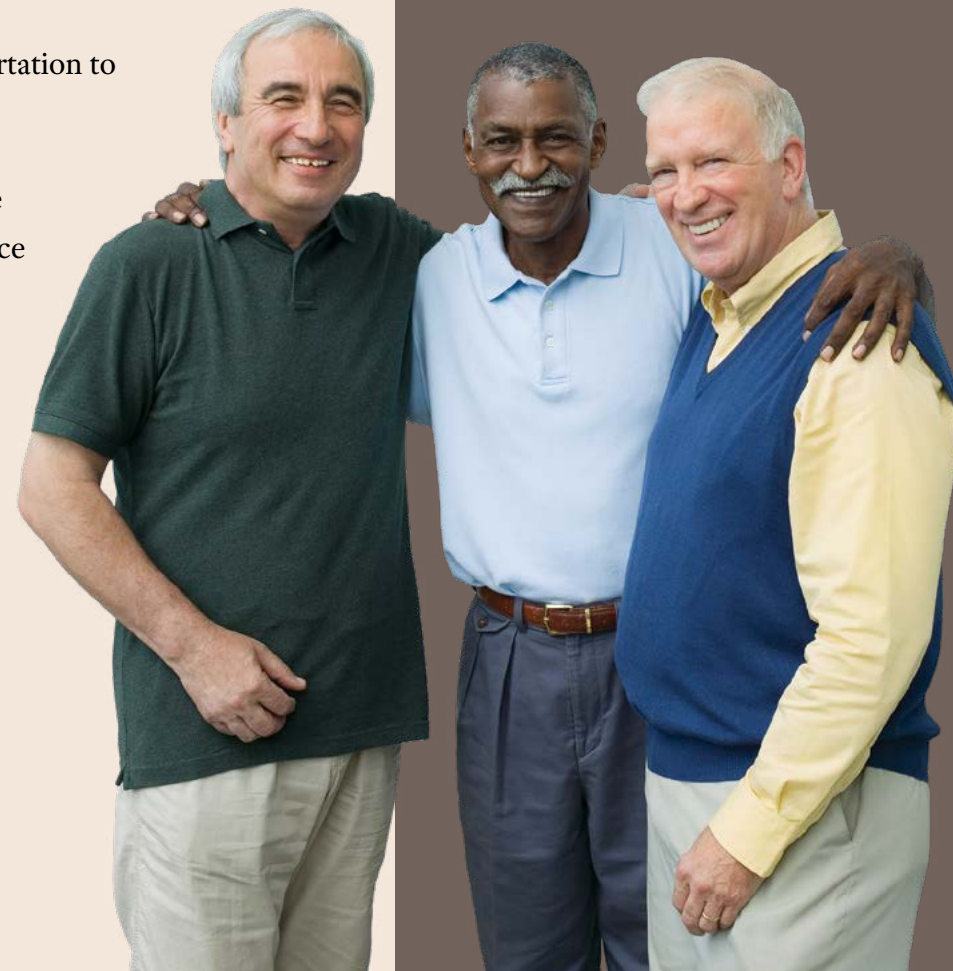
Welcome to Lexington Landing

At Lexington Landing, your ideal residence is complemented by an assortment of conveniences and amenities to enrich your life.

Enjoy maintenance-free living and comfortable, convenient floor plans. Regardless of which plan you choose, it's sure to reflect your sense of style as you add your own personal touch.

Included Amenities

- Utilities (heat, electric, central air conditioning, water, sewer, and trash)
- Continental breakfast
- Telephone service
- Basic cable television service
- Open public Wi-Fi
- Wings® Wellness: intellectually stimulating programs, spiritual care, group fitness classes, fitness center, volunteer opportunities
- Controlled entrance
- Designated complimentary transportation to shopping and outings
- Lawn care and snow removal
- Property tax and building insurance
- Apartment and building maintenance
- Preferred access to other Presbyterian Homes & Services living and care options based on availability (guidelines apply)
- Month-to-month residency agreement
- Smoke-free community

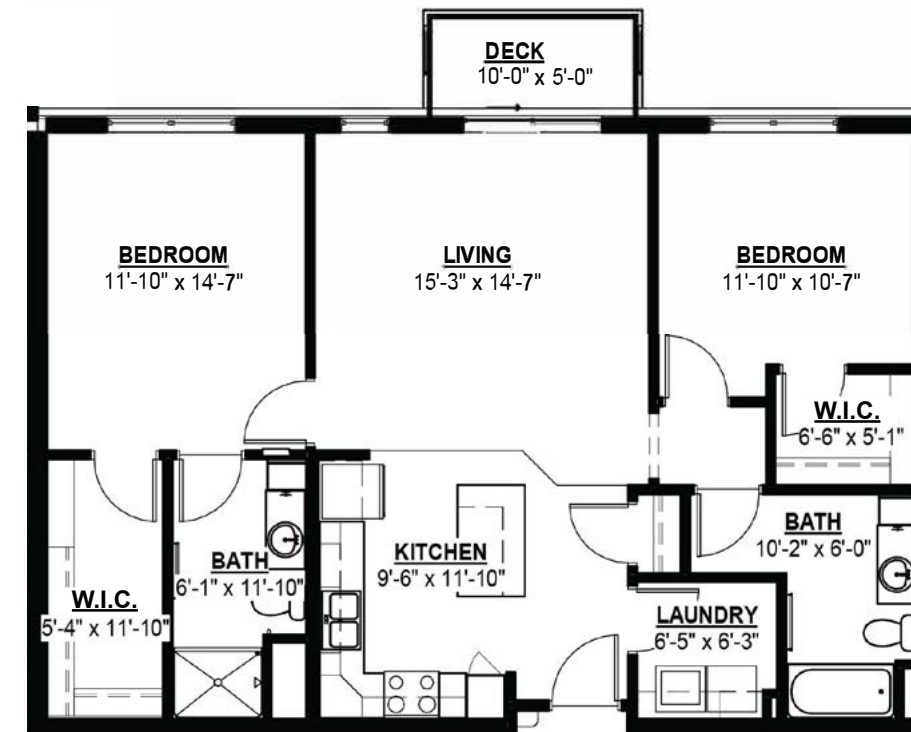


Other Conveniences

Additional fees may apply

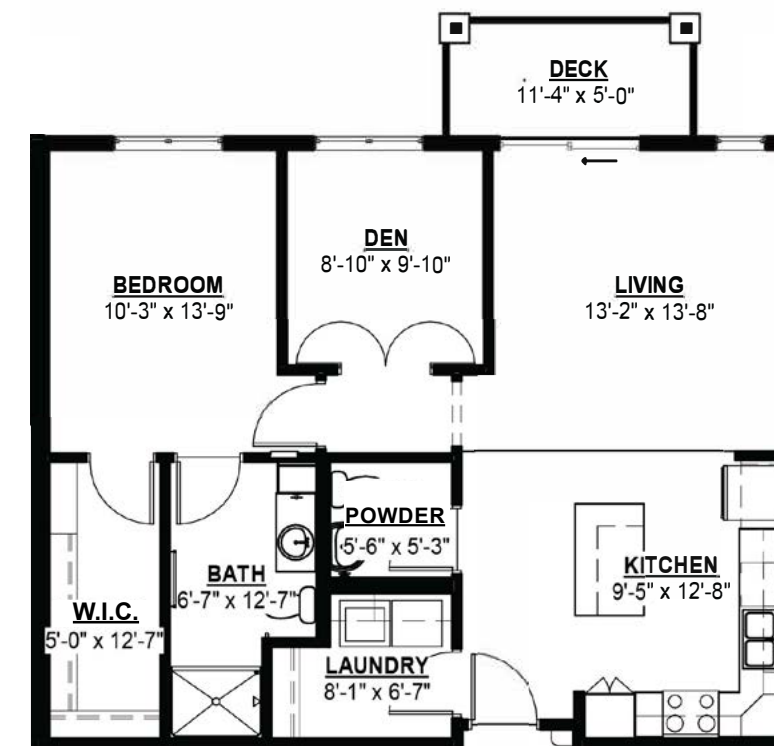
- Underground parking
- Restaurant-style dining
- Transportation for shopping and outings
- Housekeeping
- Guest dining
- Guest suites
- Storage unit
- Internet
- Upgrade cable television packages
- Home care and hospice services available through Optage®
- Pets are welcome (guidelines apply)
- Outpatient therapy — physical, occupational and speech therapy

Sample Floor Plans



Fairview II

1,137 Sq. Ft.
Two Bedroom

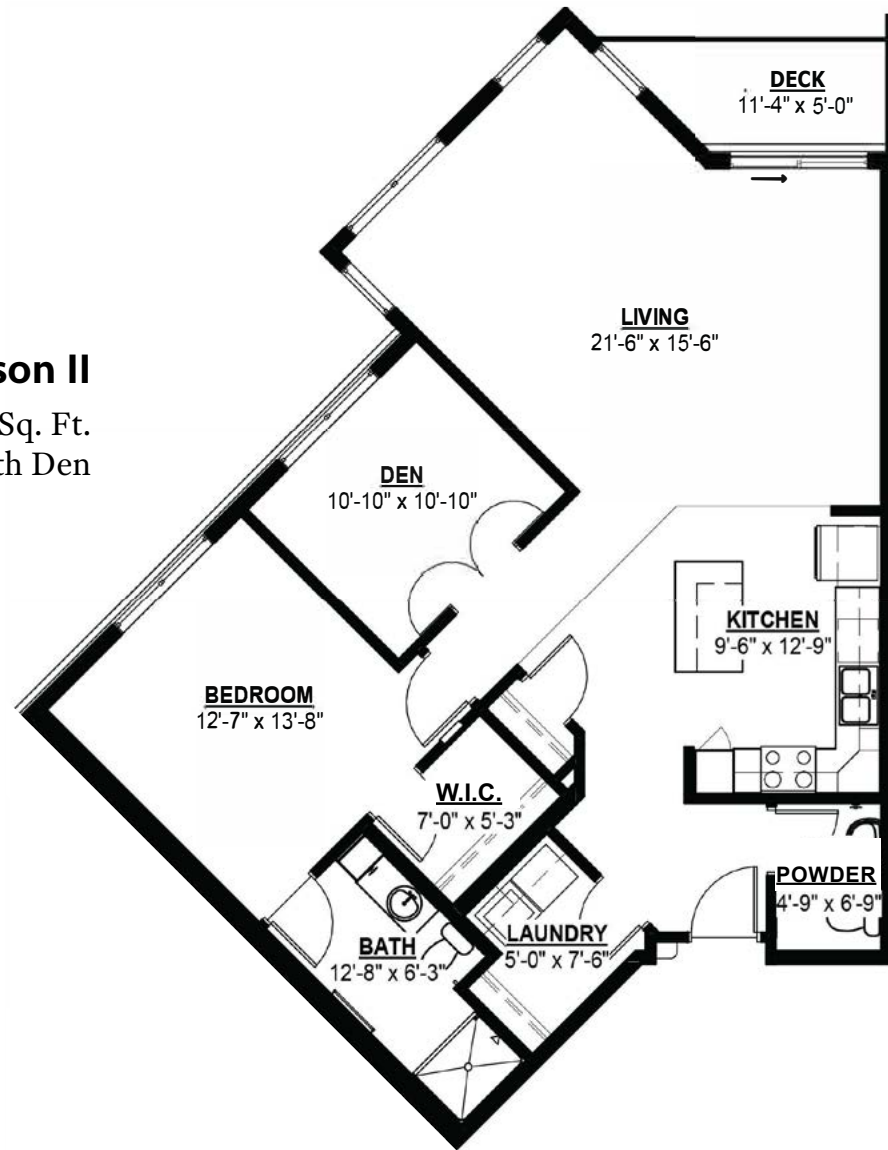


Hamline II

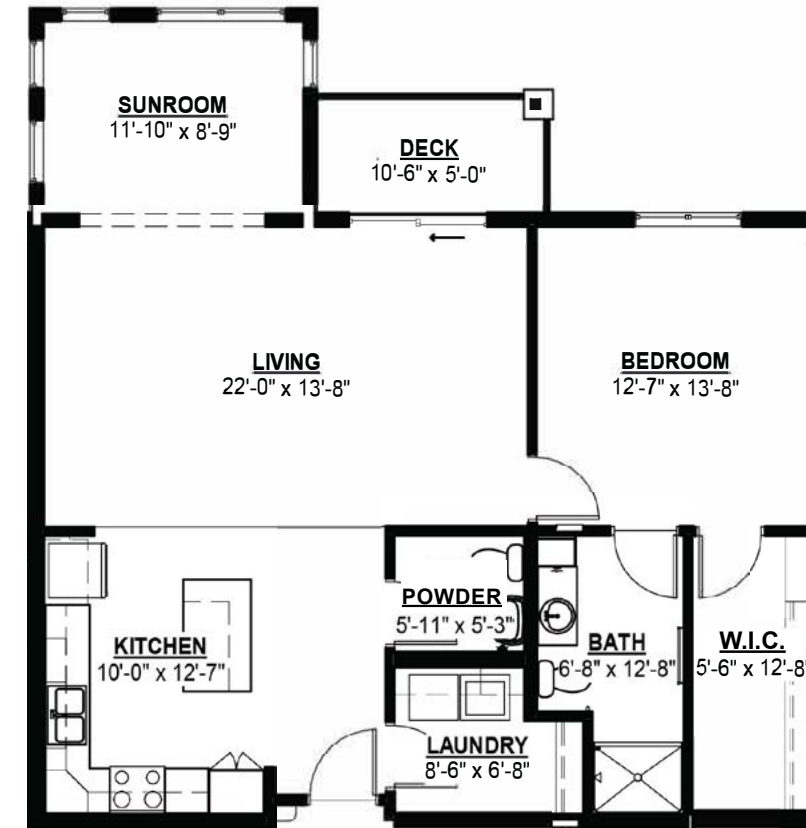
951 Sq. Ft.
One Bedroom with Den

Floor plans, features and amenities are subject to change without notice. Stated dimensions and square footage are approximate. Additional floor plans may be available. Please ask about availability.

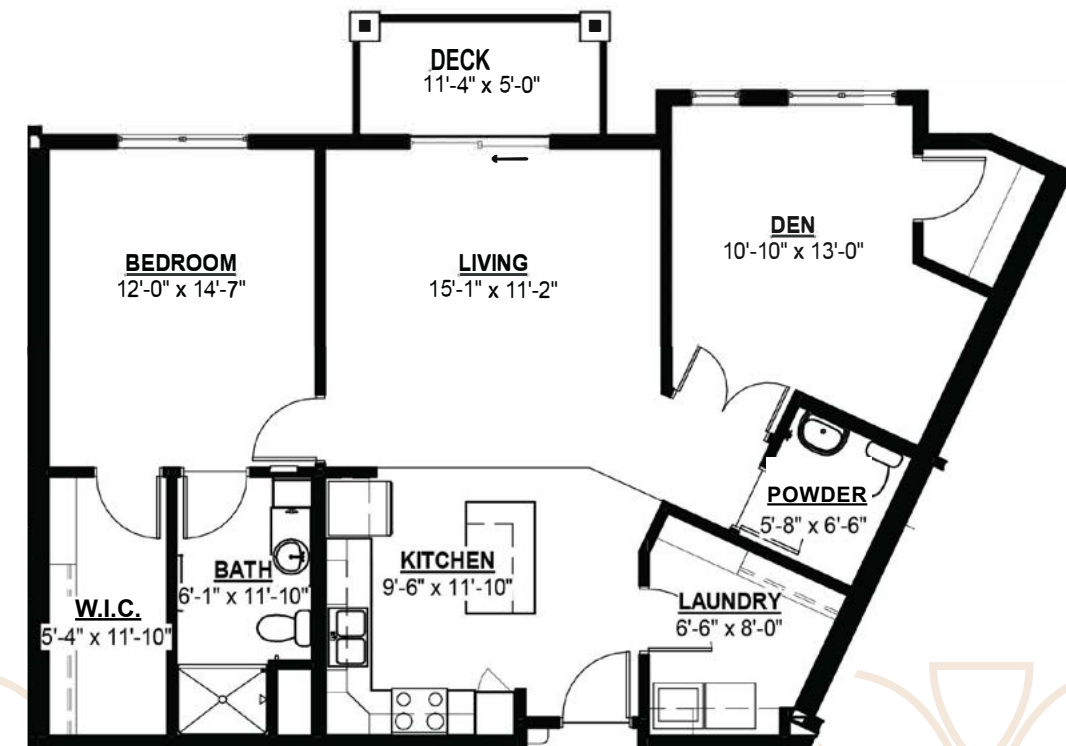
Jefferson II
1,223 Sq. Ft.
One Bedroom with Den



Montreal II
1,128 Sq. Ft.
One Bedroom
with Sunroom



Linwood II
1,255 Sq. Ft.
Two Bedroom
with Sunroom



Oxford II
1,143 Sq. Ft.
One Bedroom with Den

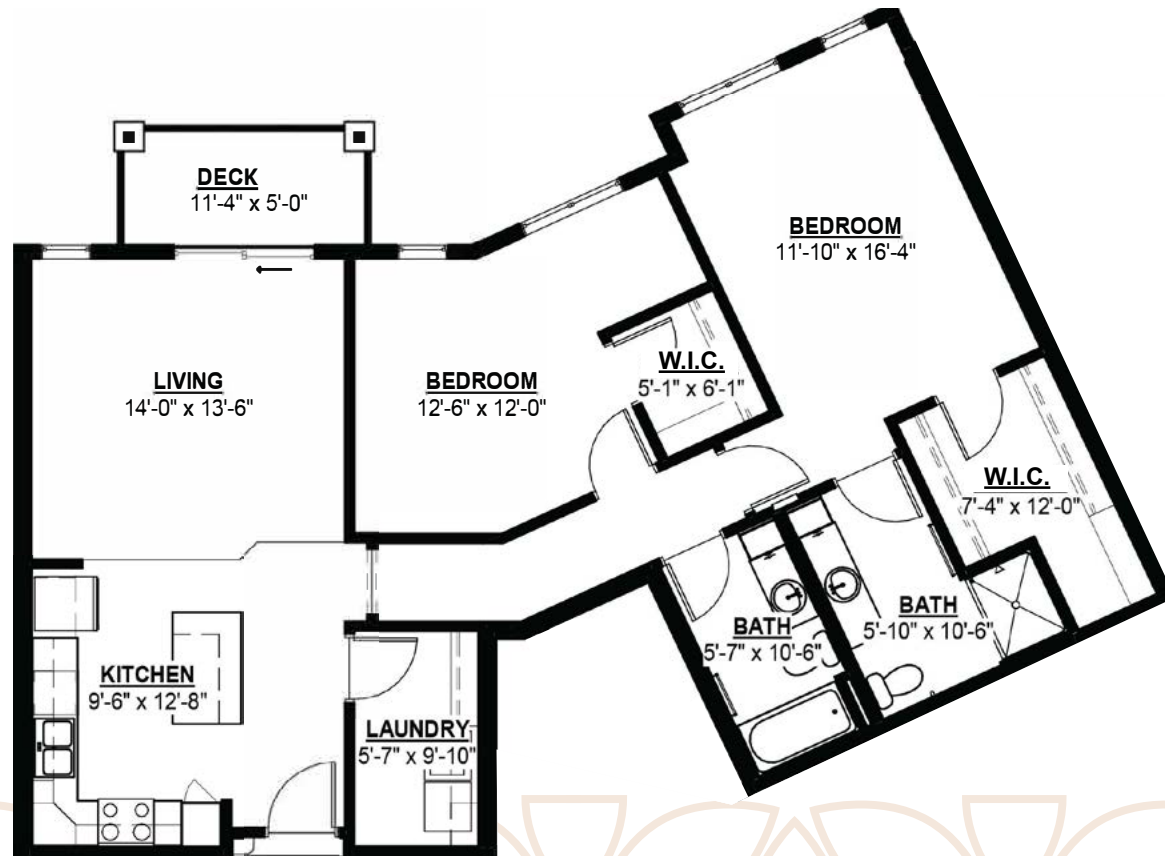
Pinehurst II

1,043 Sq. Ft.
One Bedroom
with Sunroom



Summit II

1,258 Sq. Ft.
Two Bedroom



Our senior apartments offer maintenance-free living and comfortable floor plans with value and convenience. Nicely appointed common areas are well-suited for group events and casual gatherings. Social, recreational and volunteer opportunities help create a sense of community.

Distinctive Details

- Bright open floor plans emphasize spacious rooms
- Fully equipped kitchen with refrigerator, stove/self-cleaning oven, dishwasher, microwave and garbage disposal
- Kitchens include stainless steel appliances and granite counter tops
- Maple cabinetry throughout
- Blinds on all windows and balcony/deck doors
- Convenient in-home laundry with washer and dryer
- Individually controlled heat and central air conditioning
- Private balcony/deck on most apartments

Monthly Rental Fee

Name	Apartment Type	Sq. Ft.	Rate
Hillcrest II	One Bedroom	769	\$2,525
Goodrich II	One Bedroom (Accessible)	951	\$2,935
Mount Curve II	One Bedroom	1,109	\$3,395
Hamline II	One Bedroom/Den	951	\$2,935
Jefferson II	One Bedroom/Den	1,223	\$3,785
Pinehurst II	One Bedroom/Sunroom	1,043	\$3,270
Montreal IIA	One Bedroom/Sunroom	1,103	\$3,500
Montreal II	One Bedroom/Sunroom	1,128	\$3,555
Oxford II	One Bedroom/Den	1,143	\$3,605
Fairview II	Two Bedroom	1,137	\$3,530
Grand II	Two Bedroom	1,232	\$3,835
Summit II	Two Bedroom	1,258	\$3,965
Juno II	Two Bedroom	1,314	\$4,095
Edgcumbe II	Two Bedroom/Sunroom	1,237	\$3,915
Linwood II	Two Bedroom/Sunroom	1,255	\$3,990
Highland II	Two Bedroom/Den	1,531	\$4,700

Pricing subject to change. Residency agreement available upon request.



The mission of the J. A. Wedum Foundation is to develop and utilize their resources to positively change and improve people's lives in the spirit of stewardship and generosity. Lexington Landing is one example of how we provide opportunities for people to live life to the fullest.

Living Options

- Senior apartments
- Assisted living apartments
- Assisted living memory care residence

651-695-6400

900 Old Lexington Avenue
Saint Paul, MN 55116

LexingtonLanding.org

All faiths welcome.
Equal housing opportunity.



Due to COVID-19 or other future circumstance, some features may be temporarily unavailable or offered in a different way. We anticipate features will become available in original form once it is prudent to do so. Presbyterian Homes & Services (PHS) communities comply with applicable federal civil rights laws and do not discriminate on the basis of race, color, national origin, age, disability or sex. preshomes.org

Español (Spanish): Llame al 1-844-558-6125
Hmoob (Hmong): Hu rau 1-844-558-6125
Tagalog (Tagalog - Filipino): Tumawag sa 1-844-558-6125

Owned by the J. A. Wedum Foundation. Professional management by PHS Management, LLC. Optage® is a registered trademark of Presbyterian Homes and Services. ©2023 Presbyterian Homes and Services. 12/23 ♿


Lexington
LANDING