

Terrace

Senior Apartments



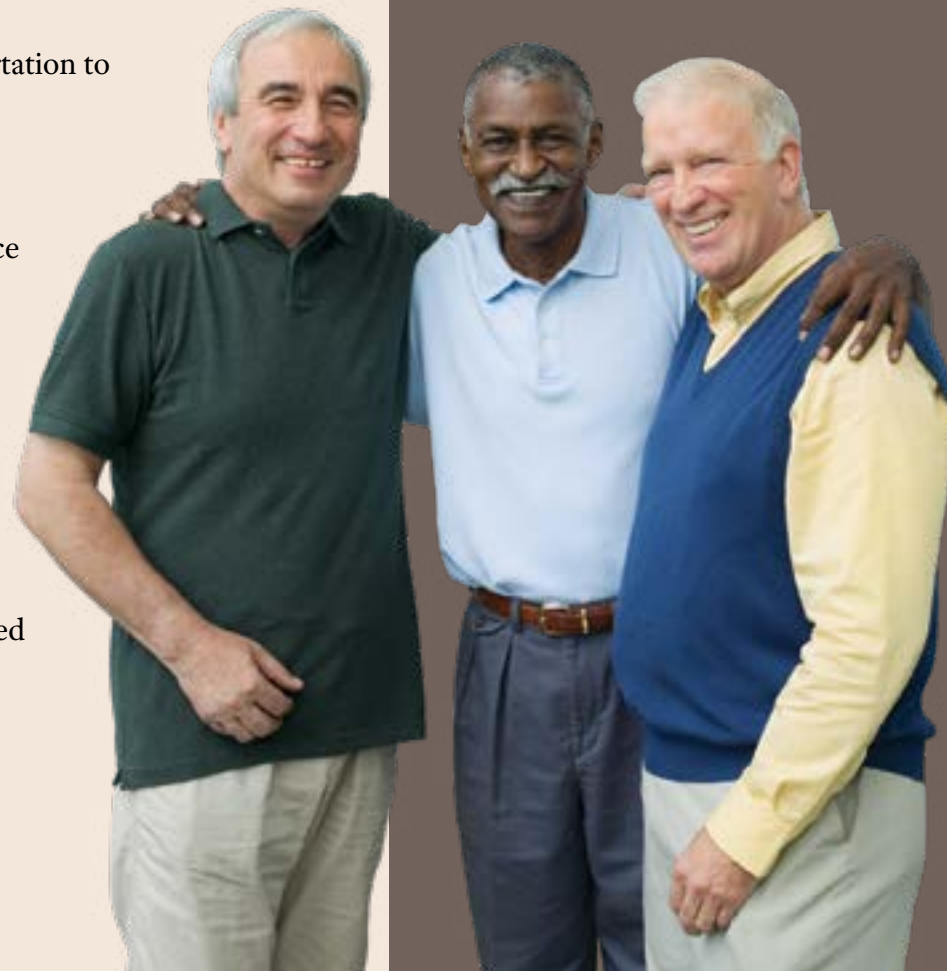
Welcome to Lexington Landing

At Lexington Landing, your ideal residence is complemented by an assortment of conveniences and amenities to enrich your life.

Enjoy maintenance-free living and comfortable, convenient floor plans. Regardless of which plan you choose, it's sure to reflect your sense of style as you add your own personal touch.

Included Amenities

- Utilities (heat, electric, central air conditioning, water, sewer, and trash)
- Continental breakfast 7 days/week
- Telephone service
- Basic cable television service
- Open public Wi-Fi
- Wings® Wellness: intellectually stimulating programs, spiritual care, group fitness classes, fitness center, volunteer opportunities
- Controlled entrance
- Designated complimentary transportation to shopping and outings
- Lawn care and snow removal
- Property tax and building insurance
- Apartment and building maintenance
- Preferred access to other Presbyterian Homes & Services living and care options based on availability (guidelines apply)
- Month-to-month residency agreement
- Smoke-free community
- Equipped with pathogen-reducing air purification technology in targeted common areas

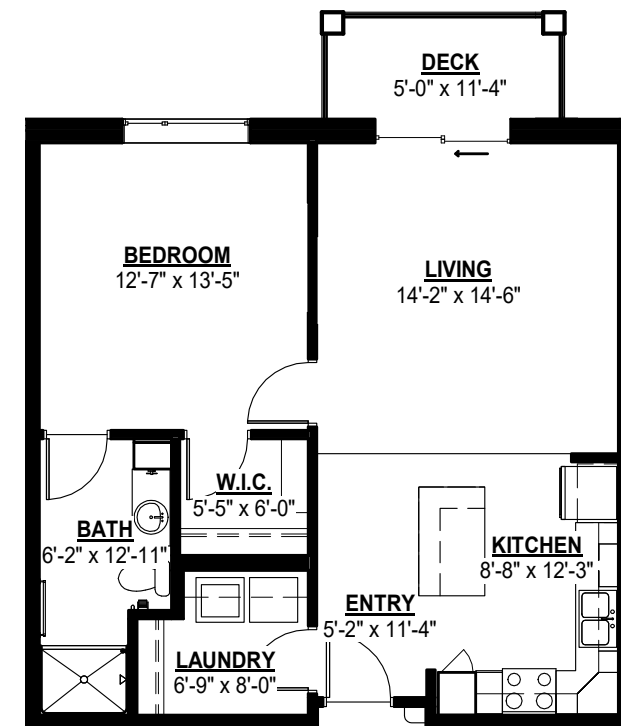


Other Conveniences

Additional fees may apply

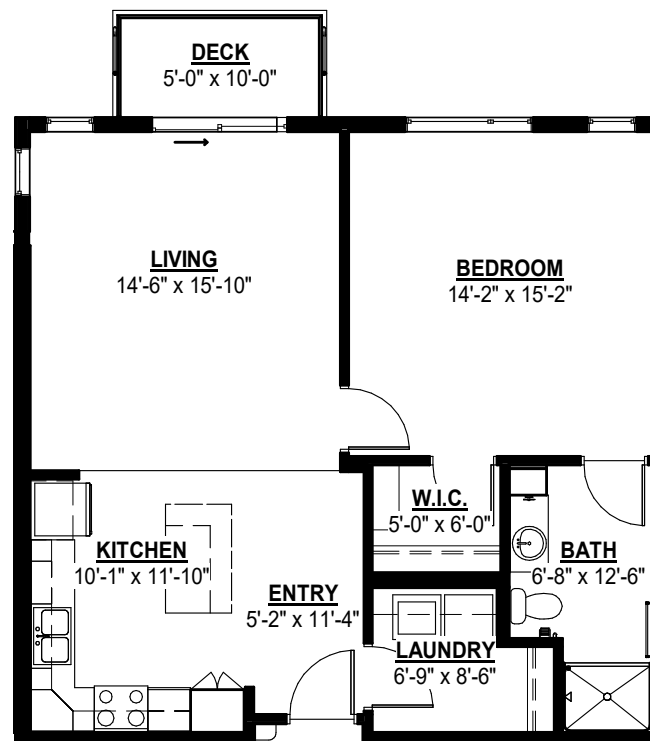
- Underground parking
- Restaurant-style dining
- Transportation for shopping and outings
- Housekeeping
- Guest dining
- Guest suites
- Storage unit
- Internet
- Upgrade cable television packages
- Home care and hospice services available through Optage®
- Pets are welcome (guidelines apply)
- Outpatient therapy — physical, occupational and speech therapy

Sample Floor Plans



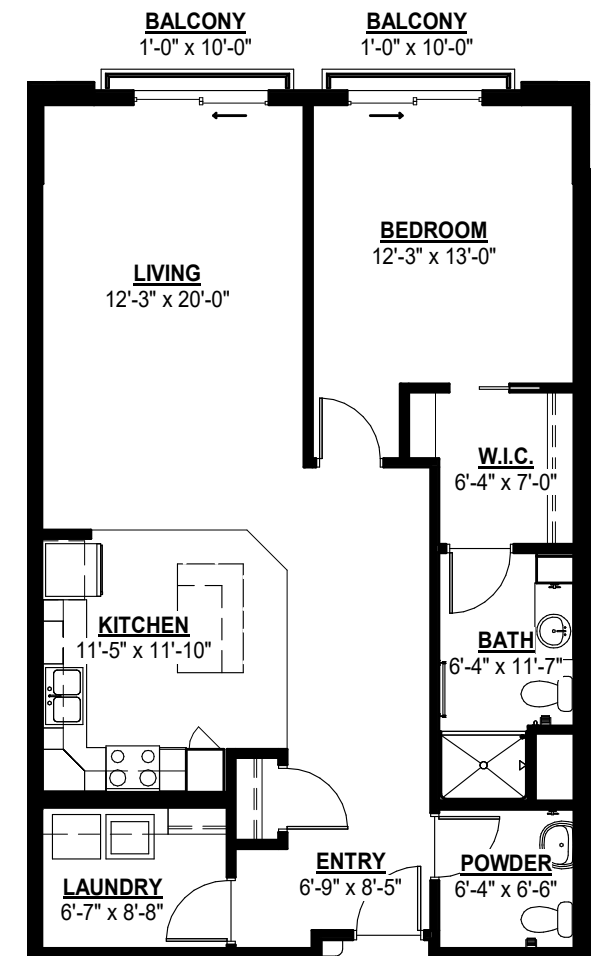
Hillcrest

778 Sq. Ft.
One Bedroom



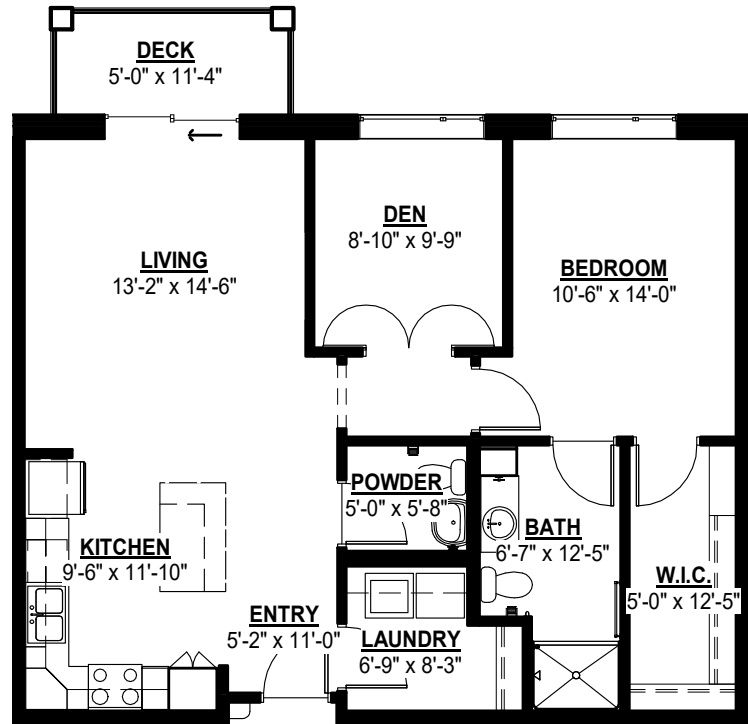
Pascal

876 Sq. Ft.
One Bedroom

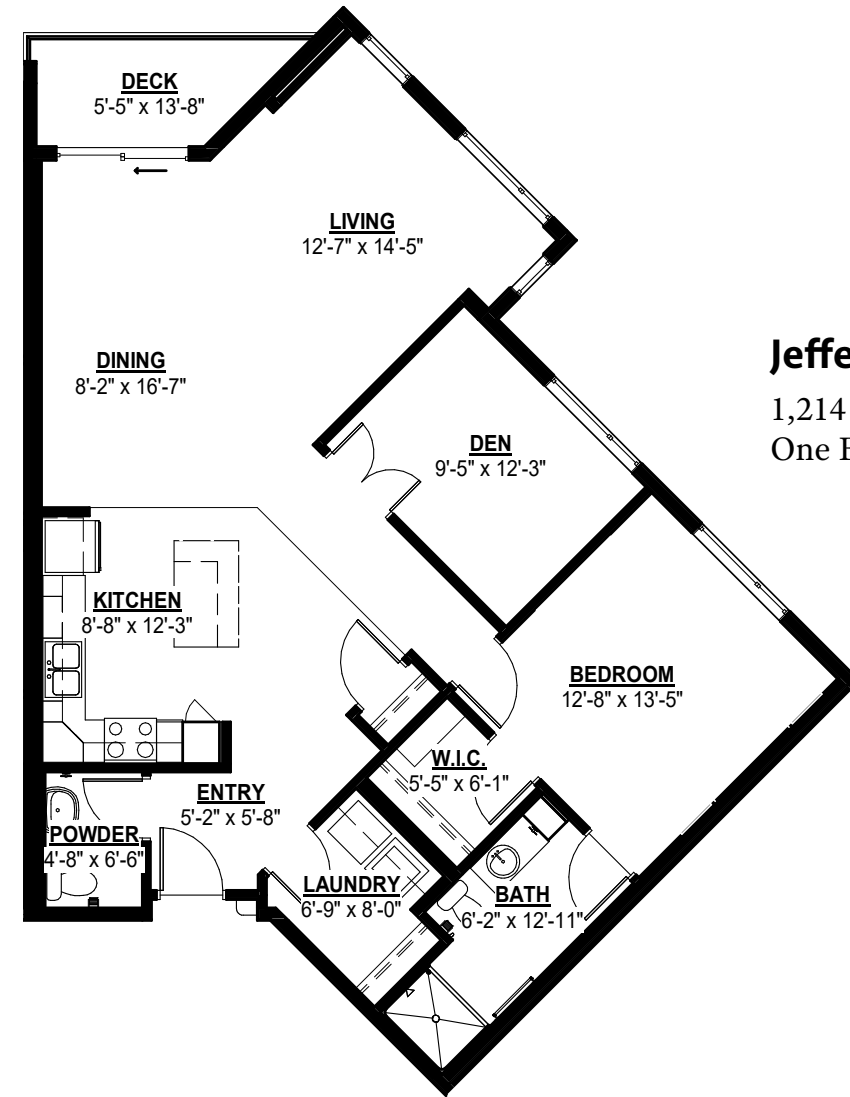


Mount Curve

1,048 Sq. Ft.
One Bedroom

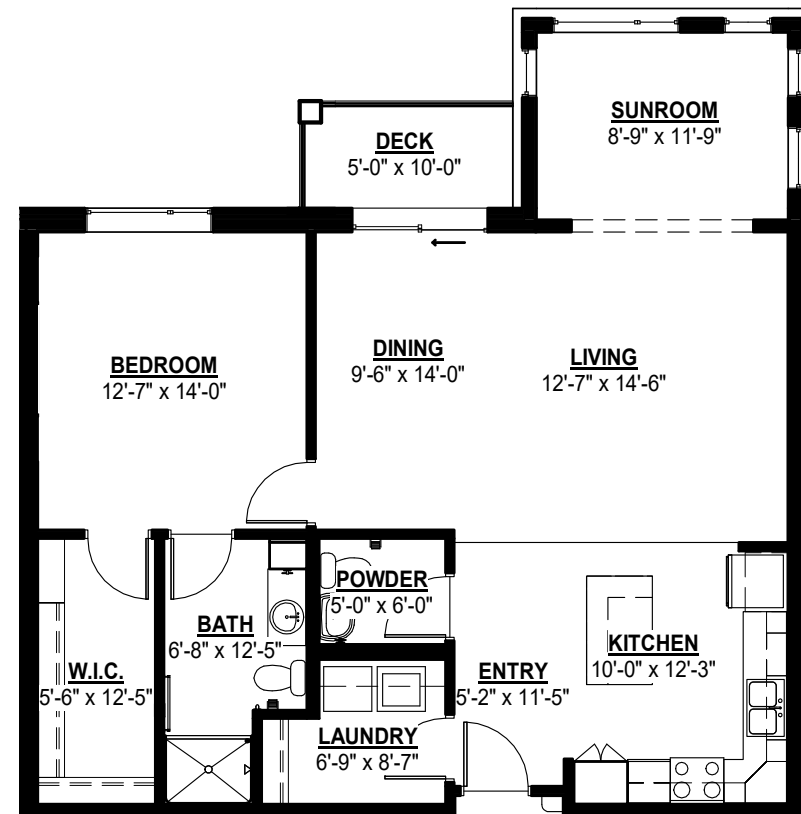


Hamline
952 Sq. Ft.
One Bedroom/Den

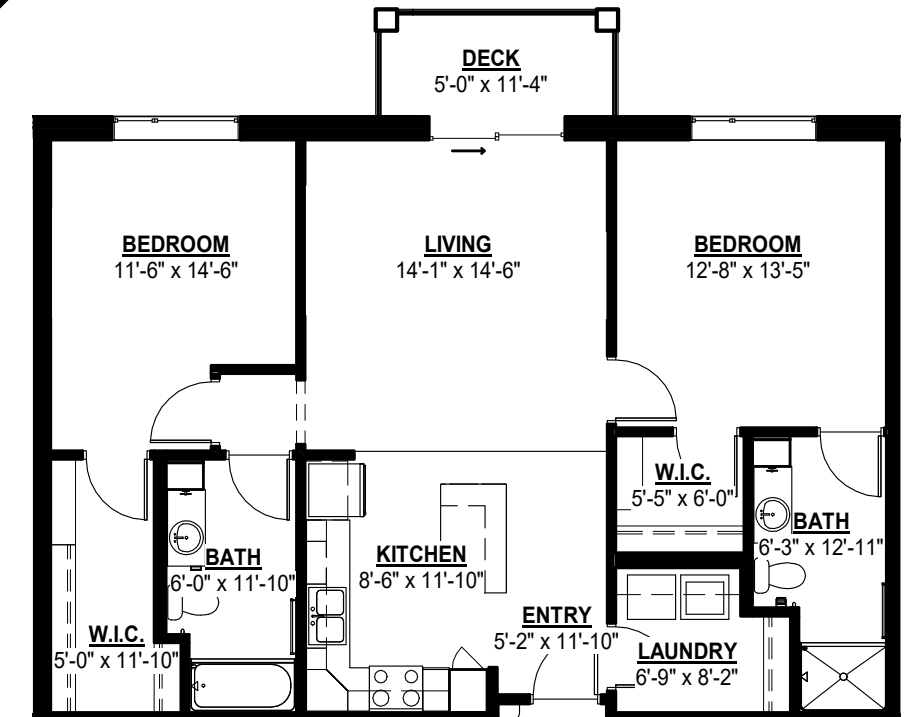


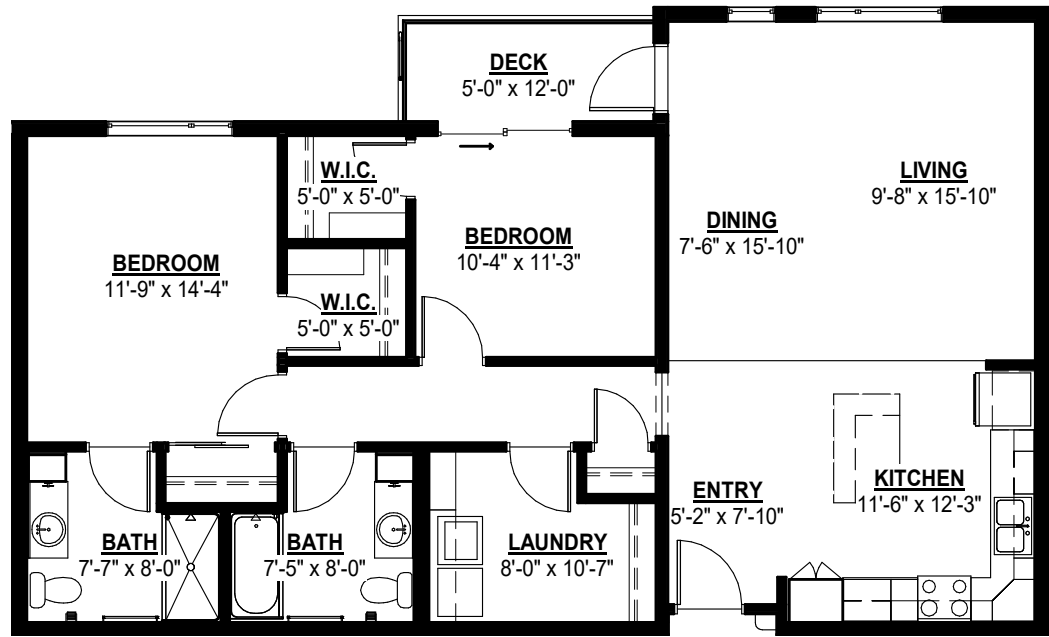
Jefferson
1,214 Sq. Ft.
One Bedroom/Den

Montreal
1,123 Sq. Ft.
One Bedroom/Sunroom



Fairview
1,114 Sq. Ft.
Two Bedroom





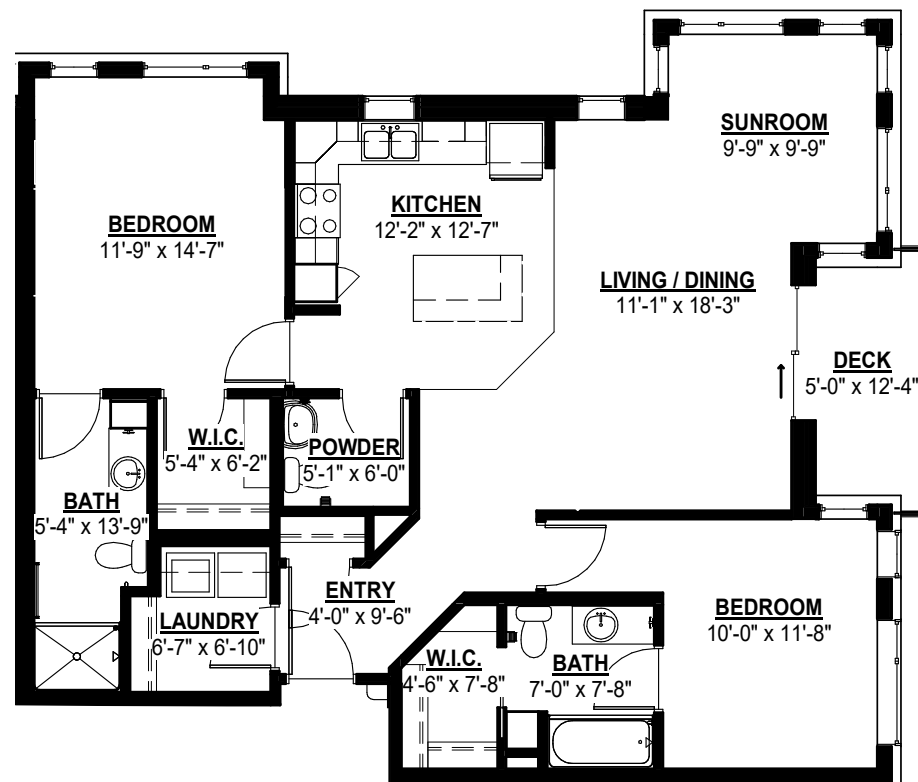
Montcalm
1,242 Sq. Ft.
Two Bedroom

Our senior apartments offer maintenance-free living and comfortable floor plans with value and convenience. Nicely appointed common areas are well-suited for group events and casual gatherings. Social, recreational and volunteer opportunities help create a sense of community.

Distinctive Details

- Bright open floor plans emphasize spacious rooms
- Fully equipped kitchen with refrigerator, stove/self-cleaning oven, dishwasher, microwave and garbage disposal
- Stainless steel appliances and granite kitchen island counter top
- Maple cabinetry throughout
- Blinds on all windows and balcony/deck doors
- Convenient in-home laundry with full size washer and dryer
- Individually controlled heat and central air conditioning
- Private balcony/deck on most apartments

Edgcumbe
1,232 Sq. Ft.
Two Bedroom/Sunroom



Monthly Rental Fee

Apartment	Sq. Ft.	Rate
One Bedroom	778-1,048	\$2,555-\$3,210
One Bedroom/Den	952-1,214	\$2,935-\$3,750
One Bedroom/Sunroom	1,123	\$3,560
Two Bedroom	1,074-1,242	\$3,335-\$3,865
Two Bedroom/Sunroom	1,232	\$3,925
Two Bedroom/Den	1,605	\$4,935



The mission of the J. A. Wedum Foundation is to develop and utilize their resources to positively change and improve people's lives in the spirit of stewardship and generosity. Lexington Landing is one example of how we provide opportunities for people to live life to the fullest.

Living Options

- Senior apartments
- Assisted living apartments
- Assisted living memory care residence

651-695-6400

900 Old Lexington Avenue
Saint Paul, MN 55116

LexingtonLanding.org

All faiths welcome.
Equal housing opportunity.



Due to COVID-19 or other future circumstance, some features may be temporarily unavailable or offered in a different way. We anticipate features will become available in original form once it is prudent to do so. Presbyterian Homes & Services (PHS) communities comply with applicable federal civil rights laws and do not discriminate on the basis of race, color, national origin, age, disability or sex. **PresHomes.org**

Español (Spanish): Llame al 1-844-558-6125
Hmoob (Hmong): Hu rau 1-844-558-6125
Tagalog (Tagalog - Filipino): Tumawag sa 1-844-558-6125

Owned by the J. A. Wedum Foundation. Professional management by PHS Management, LLC. Optage® is a registered trademark of Presbyterian Homes and Services. ©2019 Presbyterian Homes and Services.