



SummerWood of Chanhassen

The Terrace

Senior Apartments

Welcome to SummerWood of Chanhassen

At SummerWood of Chanhassen, your ideal residence is complemented by an assortment of conveniences and amenities to enrich your life.

Enjoy maintenance-free living and comfortable, convenient floor plans. Regardless of which plan you choose, it's sure to reflect your sense of style as you add your own personal touch.

Included Amenities

- Utilities (heat, electric, central air conditioning, water, sewer, and trash)
- Basic cable television service
- Open public Wi-Fi
- Continental breakfast
- Pastoral care
- Wings® wellness intellectually stimulating programs, spiritual care services, group fitness classes, fitness center, volunteer opportunities
- Designated complimentary transportation to shopping and outings
- Property tax and building insurance
- Apartment and building maintenance
- Lawn care and snow removal
- Priority access to Presbyterian Homes & Services living and care options based on availability
- Smoke-free community

Other Conveniences

Additional fees may apply

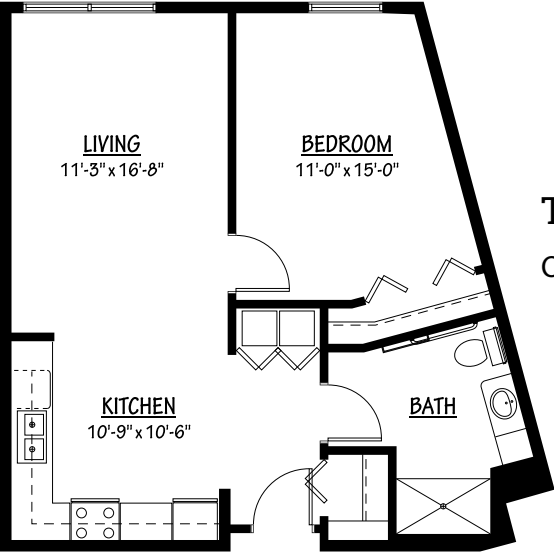
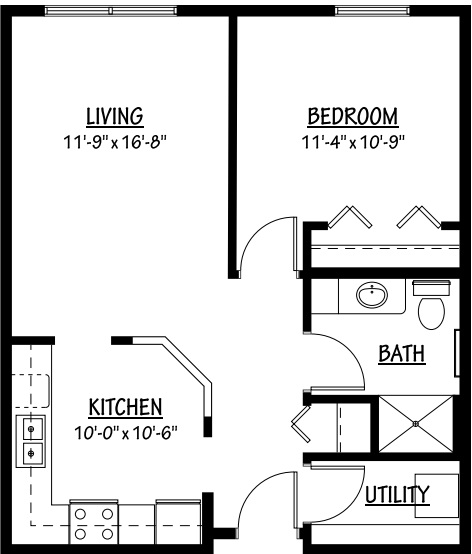
- Underground heated parking
- Indoor car wash bay
- Restaurant-style dining
- Housekeeping
- Transportation for shopping and outings
- Home care and hospice services available through Optage®
- Guest suite
- Telephone service
- Pets are welcome (guidelines apply)
- Outpatient therapy — physical, occupational and speech therapy



Sample Floor Plans

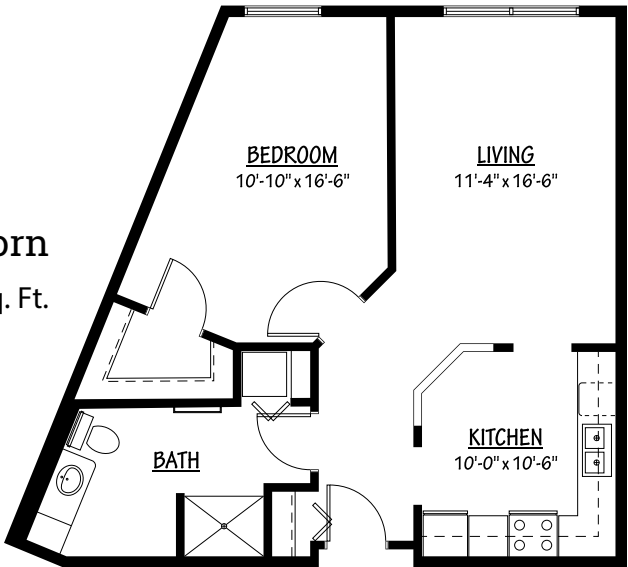
The Arrowwood

One Bedroom | 705 Sq. Ft.



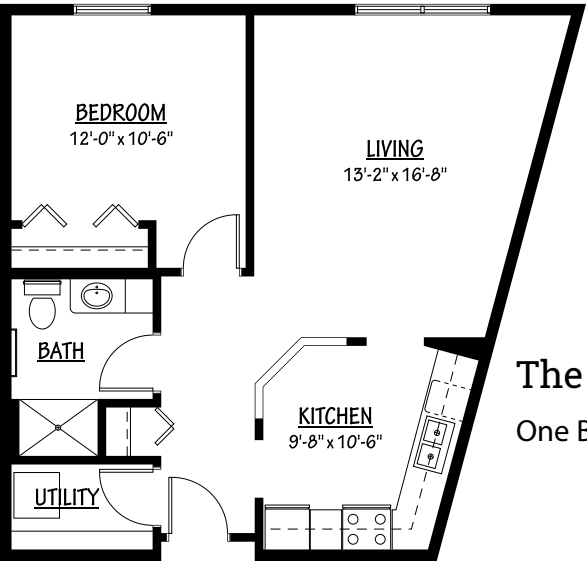
The Elderberry

One Bedroom | 732 Sq. Ft.



The Firethorn

One Bedroom | 753 Sq. Ft.

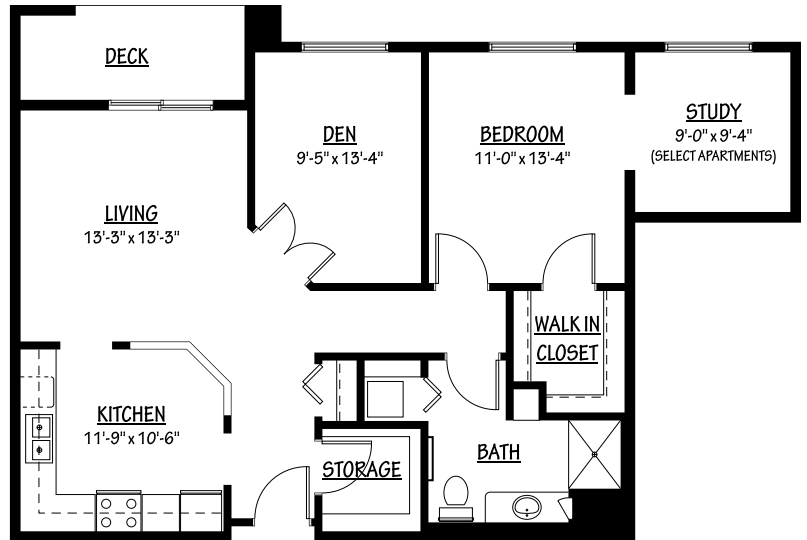


The Honeysuckle

One Bedroom | 758 Sq. Ft.

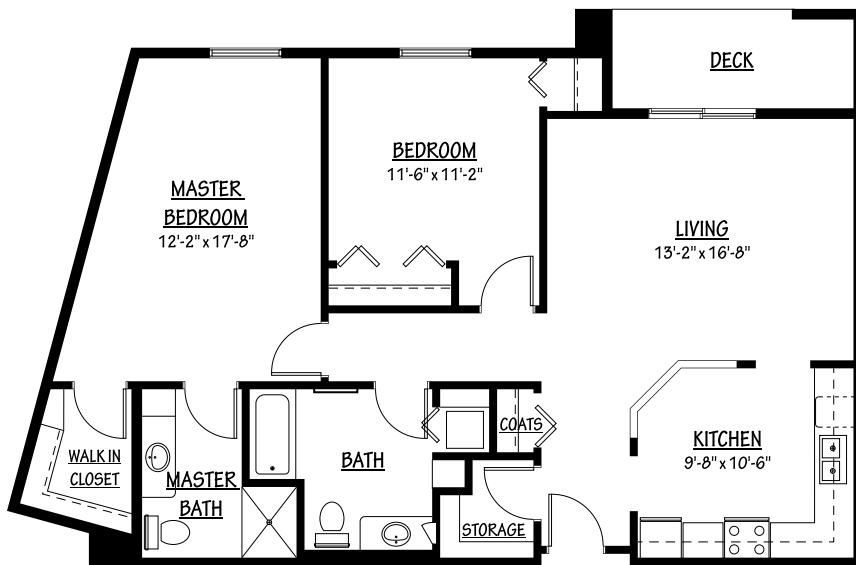
The Juniper

One Bedroom/Den | 1,000–1,100 Sq. Ft.



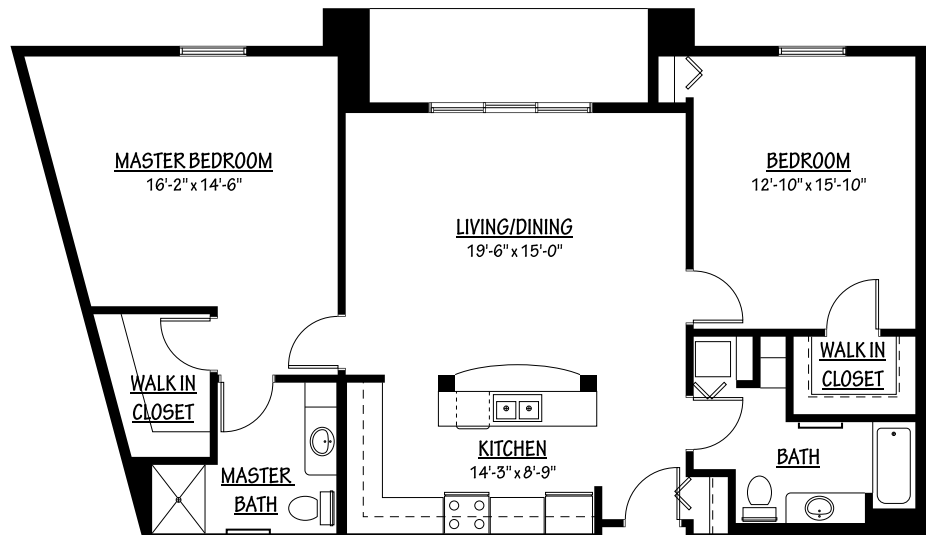
The Laurel

Two Bedroom | 1,240 Sq. Ft.



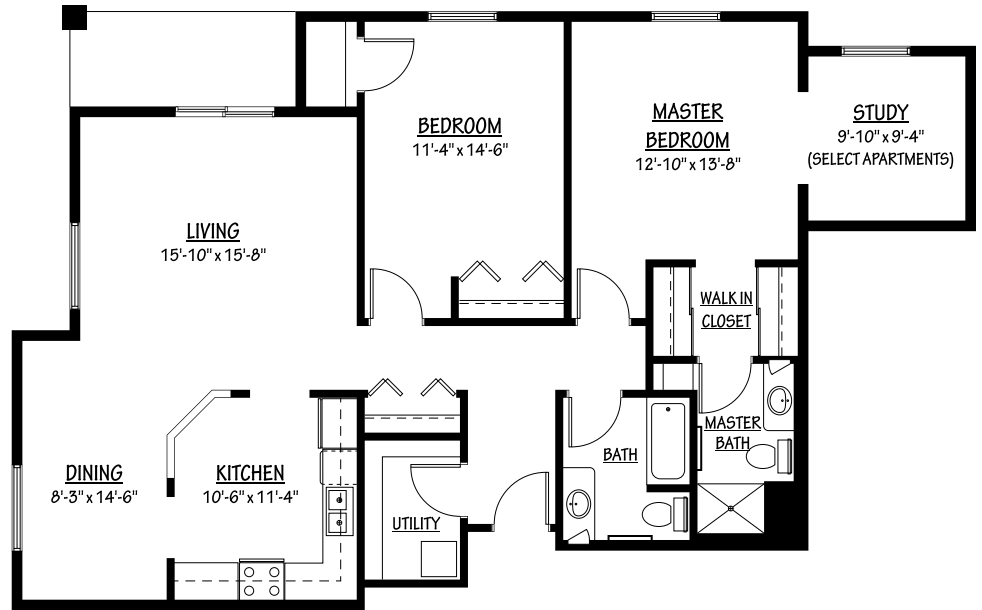
The Magnolia

Two Bedroom | 1,355 Sq. Ft.



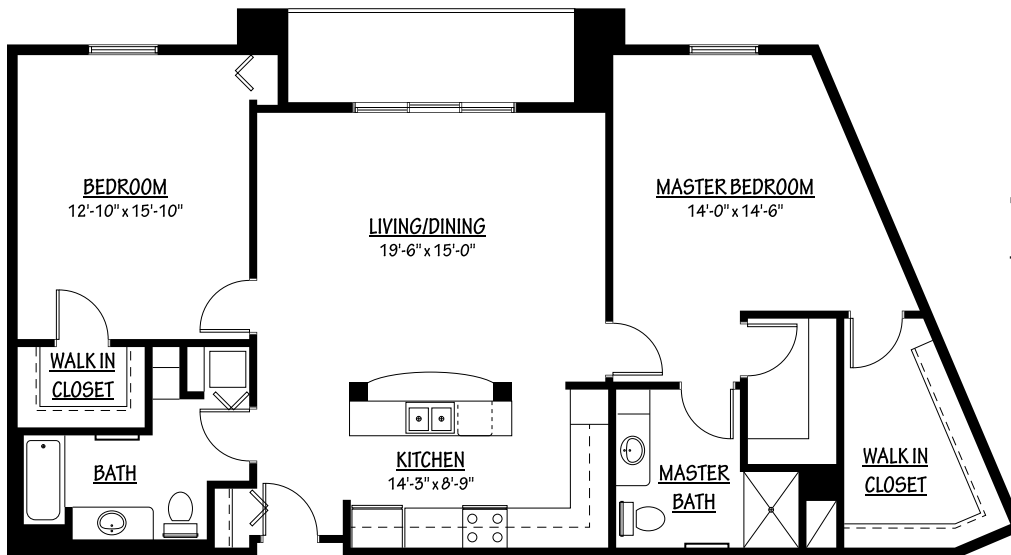
The Oleander

Two Bedroom
1,365–1,465 Sq. Ft.



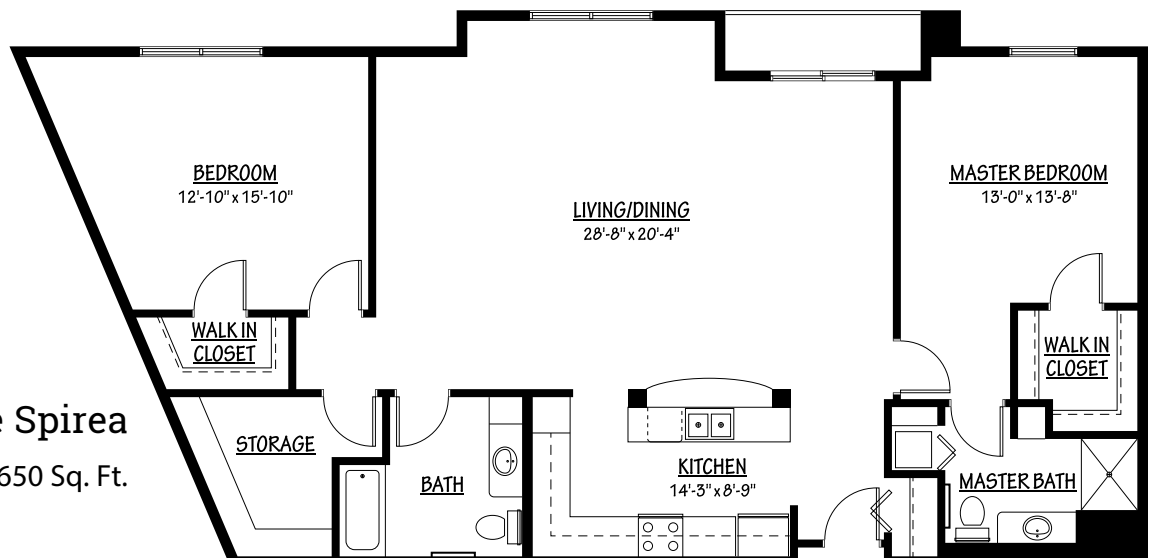
The Rosemary

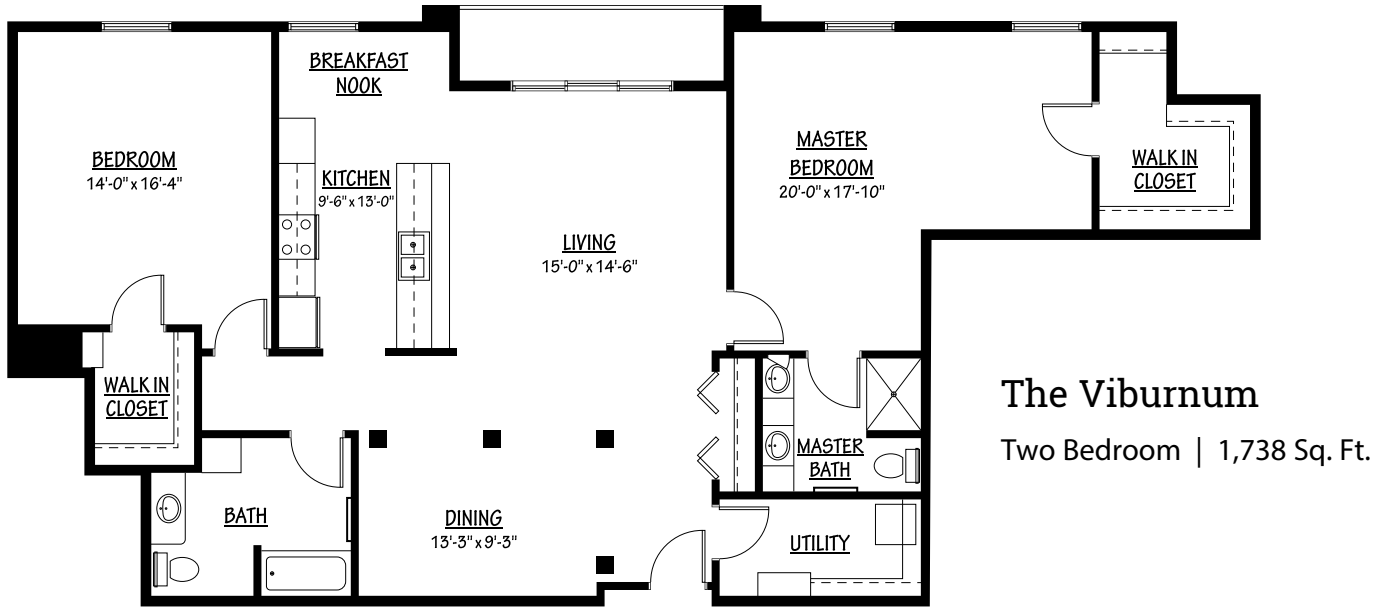
Two Bedroom | 1,418 Sq. Ft.



The Spirea

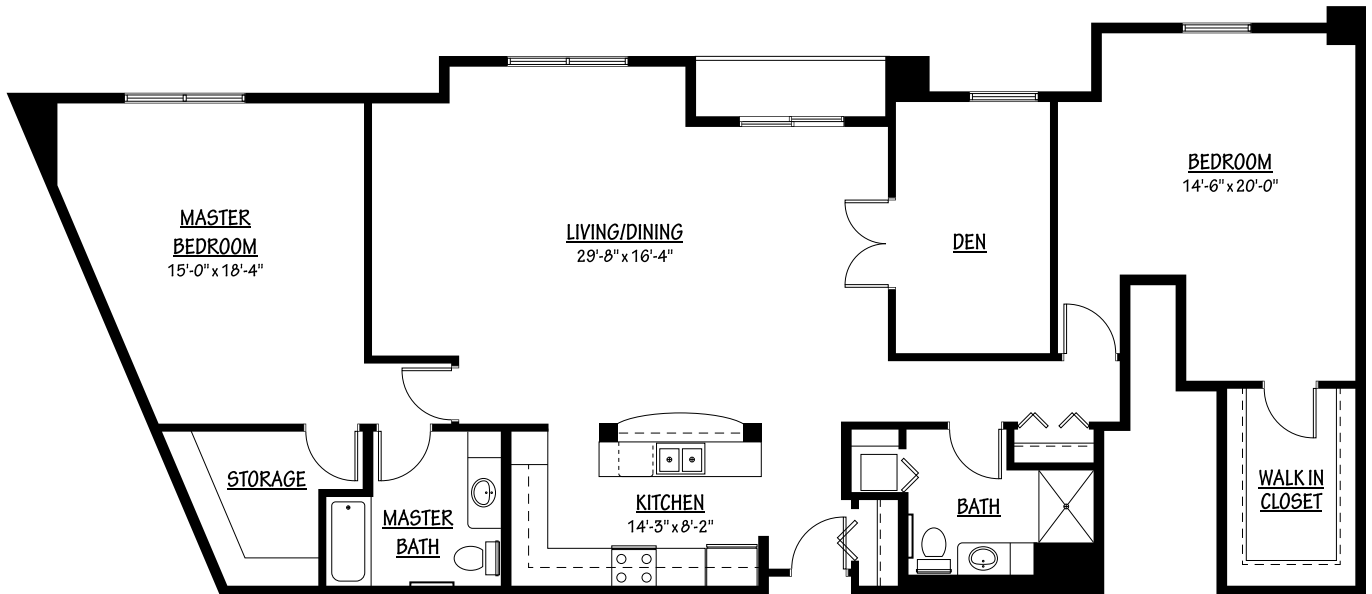
Two Bedroom | 1,650 Sq. Ft.





The Potentilla

Two Bedroom | 2,009 Sq. Ft.



Floor plans, features and amenities are subject to change without notice. Stated dimensions and square footage are approximate. Additional floor plans may be available. Please ask about availability.

Our senior apartments offer maintenance-free living and comfortable floor plans with value and convenience. Nicely appointed common areas are well-suited for group events and casual gatherings. Social, recreational and volunteer opportunities help create a sense of community.

Distinctive Details

- Bright open floor plans emphasize spacious rooms with nine foot ceilings
- Fully equipped kitchens with refrigerator, electric stove/self-cleaning oven, microwave, dishwasher, and garbage disposal
- Convenient in-home laundry with full size washer and dryer
- Individually controlled heat and central air conditioning
- Many plans offer decks

Monthly Rental Fee

Apartment	Sq. Ft.	Rate
One Bedroom	705–1,100	\$1,395–\$3,005
Two Bedroom	1,240–2,009	\$3,355–\$5,340



Pricing subject to change. Residency agreement available upon request.



952-294-5500

525 Lake Drive
Chanhassen, MN 55317

SummerWoodChanhassen.org

Living Options

- Senior apartments
- Assisted living apartments
- Assisted living memory care residences

Due to COVID-19 or other future circumstance, some features may be temporarily unavailable or offered in a different way. We anticipate features will become available in original form once it is prudent to do so. Presbyterian Homes & Services (PHS) communities comply with applicable federal civil rights laws and do not discriminate on the basis of race, color, national origin, age, disability or sex.

PresHomes.org

Español (Spanish): Llame al 1-844-558-6125

Hmoob (Hmong): Hu rau 1-844-558-6125

Tagalog (Filipino): Tumawag sa 1-844-558-6125

Professional management by PHS Management, LLC © 2021 Presbyterian Homes and Services
All faiths welcome. Equal housing opportunity.

9/23 

 **presbyterian
homes & services**
freedom to live well®