



# The Farmstead

The Village Homes

Townhomes

# Welcome to The Farmstead

At The Farmstead, your ideal residence is complemented by an assortment of conveniences and amenities to enrich your life.

Enjoy maintenance-free living and comfortable, convenient floor plans. Regardless of which plan you choose, it's sure to reflect your sense of style as you add your own personal touch.

---

## Included Amenities

- Utilities (heat, water, sewer and trash)
- Wings® wellness intellectually stimulating programs, spiritual care services, group fitness classes, fitness center, volunteer opportunities
- Designated complimentary transportation to shopping and outings
- Pastoral care
- Monitored smoke detector
- Month-to-month residency agreement
- Property tax and building insurance
- Interior and exterior home maintenance
- Lawn care and snow removal
- Priority access to other Presbyterian Homes & Services living and care options based on availability

## Other Conveniences

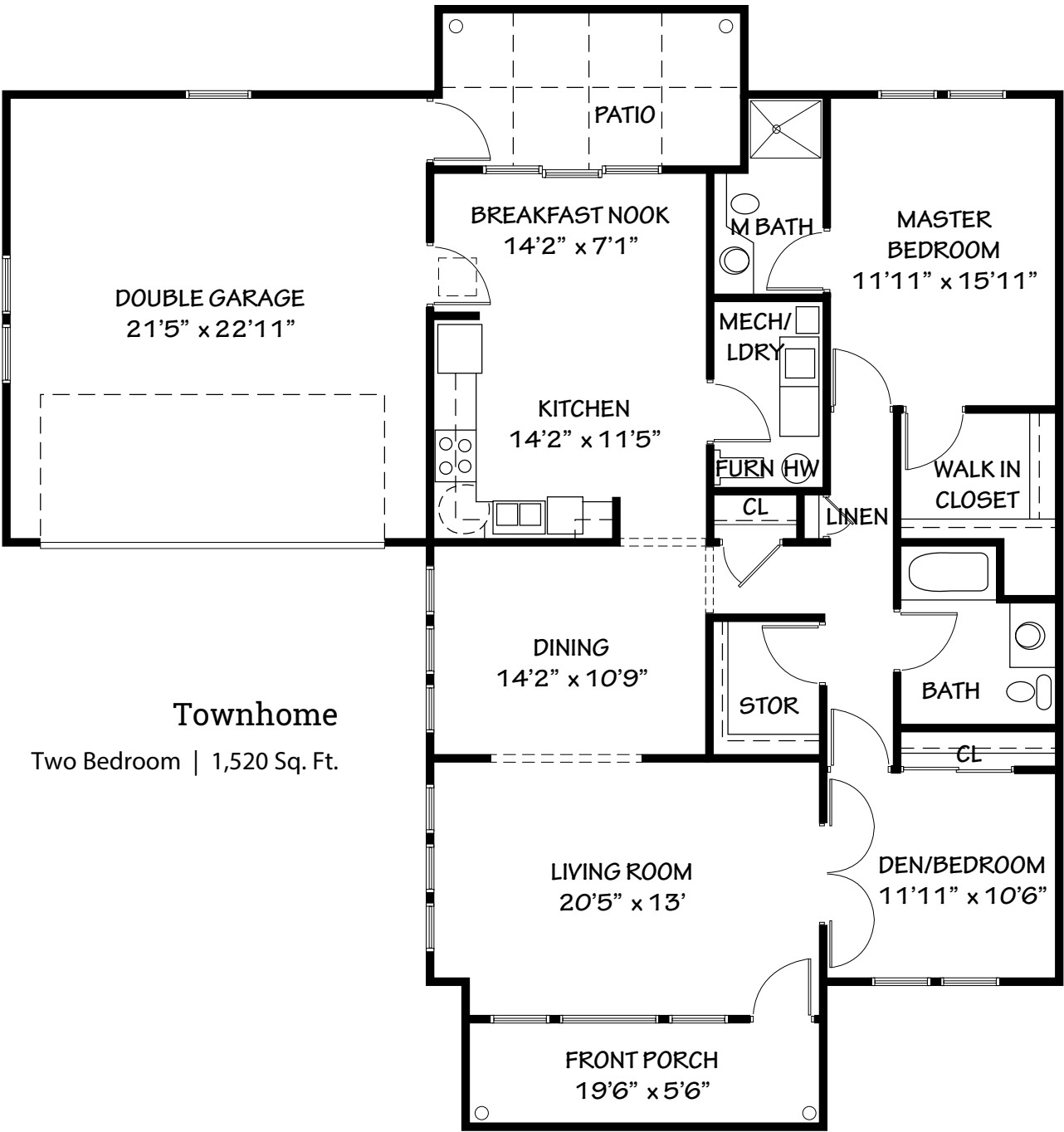
*Additional fees may apply*

- Restaurant-style dining
- Transportation for shopping and outings
- Home care and hospice services available through Optage®
- Housekeeping
- Handyman
- Guest suite
- Telephone service
- Cable television service
- Electric
- Country store





# Sample Floor Plan



**Townhome**  
Two Bedroom | 1,520 Sq. Ft.



The Farmstead

Townhomes  
763-712-7000

*Floor plans, features and amenities are subject to change without notice. Stated dimensions and square footage are approximate. Additional floor plans may be available. Please ask about availability.*



Casual elegance and design combine to make every townhome a gracious retreat. Well-appointed, attached homes with private exterior entrances maintain your high level of independence while providing all the benefits of a community setting without the hassle of household maintenance.

## Distinctive Details

- Homes feature single level living with front porch and walk-out patio
- Bright open floor plans emphasize spacious rooms with nine foot ceilings
- Fully equipped kitchen with refrigerator, electric stove/self-cleaning oven, dishwasher and garbage disposal
- Convenient in-home laundry with full size washer and dryer
- Blinds on all windows
- Walk-in storage
- Oak cabinetry throughout
- High efficiency gas forced-air heat and central air conditioning
- Attached single or double garage with remote openers
- Telephone and cable outlets in all rooms

## Monthly Rental Fee

### Townhome

Townhome with Garage

### Sq. Ft.

1,520

### Rate

\$2,995–\$3,070



*Pricing subject to change. Residency agreement available upon request.*





**763-712-7000**

13733 Quay Street NW  
Andover, MN 55304

**FarmsteadPHS.org**

*Due to COVID-19 or other future circumstance, some features may be temporarily unavailable or offered in a different way. We anticipate features will become available in original form once it is prudent to do so. Presbyterian Homes & Services (PHS) communities comply with applicable federal civil rights laws and do not discriminate on the basis of race, color, national origin, age, disability or sex.*

PresHomes.org

Español (Spanish): Llame al 1-844-558-6125

Hmoob (Hmong): Hu rau 1-844-558-6125

Tagalog (Filipino): Tumawag sa 1-844-558-6125

Professional management by PHS Management, LLC © 2021 Presbyterian Homes and Services  
All faiths welcome. Equal housing opportunity.

## Living Options

- Townhomes
- Senior apartments
- Assisted living apartments
- Assisted living memory care residence

 **presbyterian  
homes & services**  
*freedom to live well®*