



Walnut Ridge

The Commons

Assisted Living

Welcome to Walnut Ridge

For a setting that offers freedom combined with the comfort of knowing supportive services are available, choose The Commons assisted living.

Shape your daily life as you desire with the support of Liberty Personally Designed Living™, an innovative approach to personal care and assistance. Nicely appointed common areas are well-suited for group or casual gatherings, while social and recreational opportunities create a sense of community.

Included Amenities

- Escorts to meals and activities for first 5 days
- Choice of three meals daily
- Flexible dining hours
- Weekly light housekeeping and linen change
- Urgent call system
- 24 hour on-site Resident Assistant staffing
- Designated complimentary transportation to shopping and outings
- Ridge Club membership
 - Multipurpose warm-water pool
 - Fitness center
 - Health and wellness programs
- Pastoral care
- Social programs and events
- Laundry facilities
- Controlled entrance
- Utilities (heat, electric, central air conditioning, water, sewer, and trash)
- Expanded basic cable service
- Open public Wi-Fi
- Telephone service
- Priority access to other Presbyterian Homes & Services living and care options based on availability
- Smoke-free community



Other Conveniences

Additional fees may apply

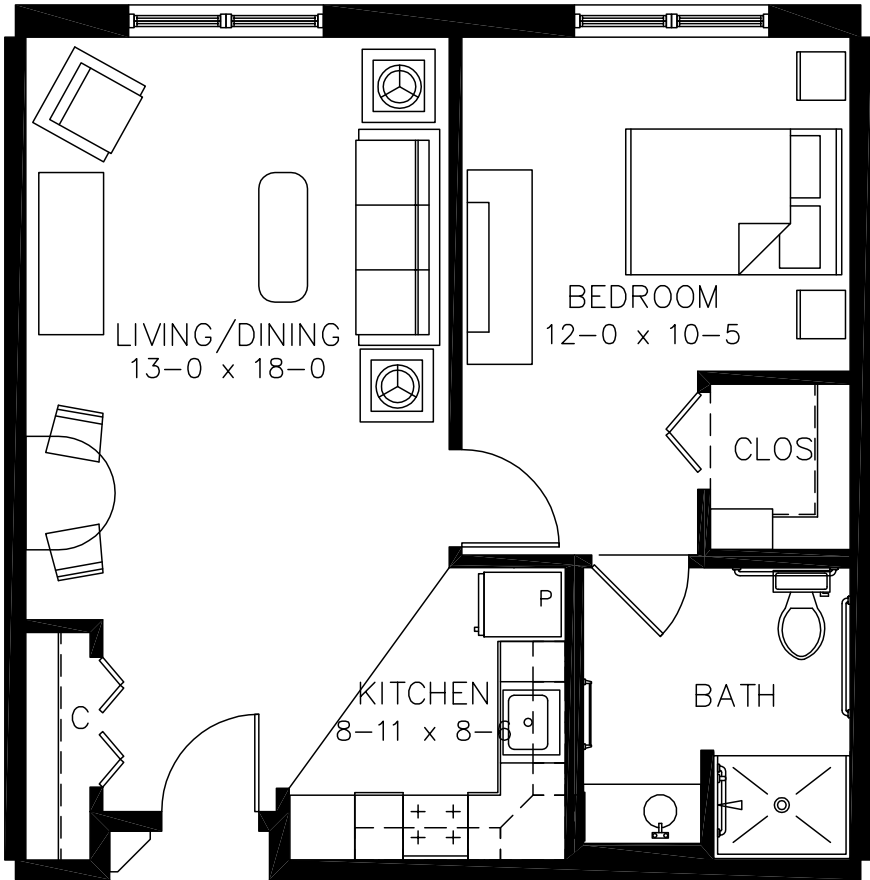
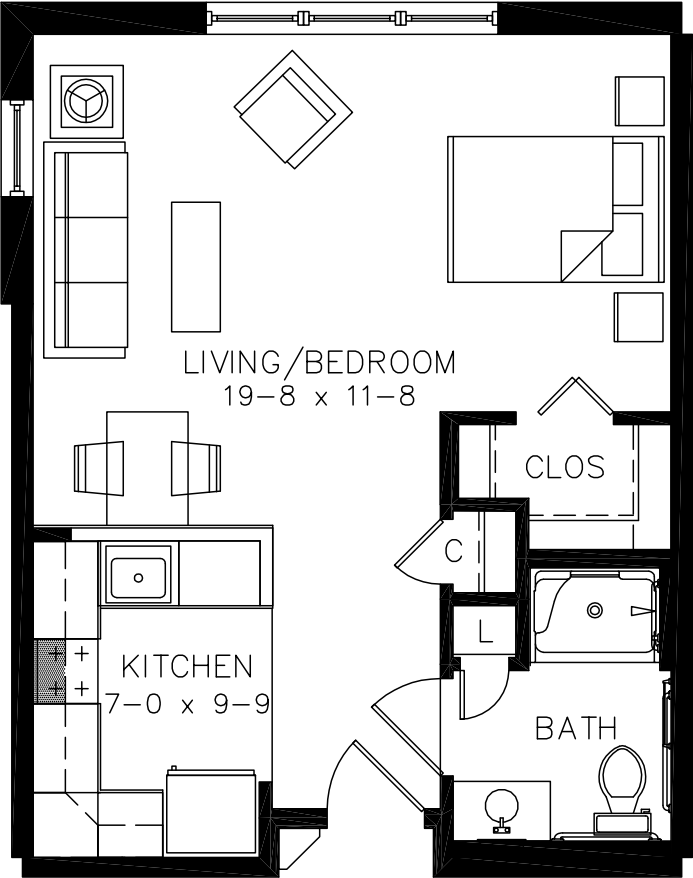
- Professional fitness trainer
- Transportation for shopping and outings
- Restaurant-style dining
- Assistance with arranging transportation to medical and social service appointments
- Assistance with accessing community resources and social services
- Additional housekeeping
- Additional maintenance
- Laundry service
- Business office services (copy, fax)
- Second occupant, \$1,135 with no personal care package; \$1,565 with personal care package
- Guest dining and guest suite
- Pets are welcome (guidelines apply)
- Outpatient therapy — physical, occupational and speech therapy

Distinctive Details

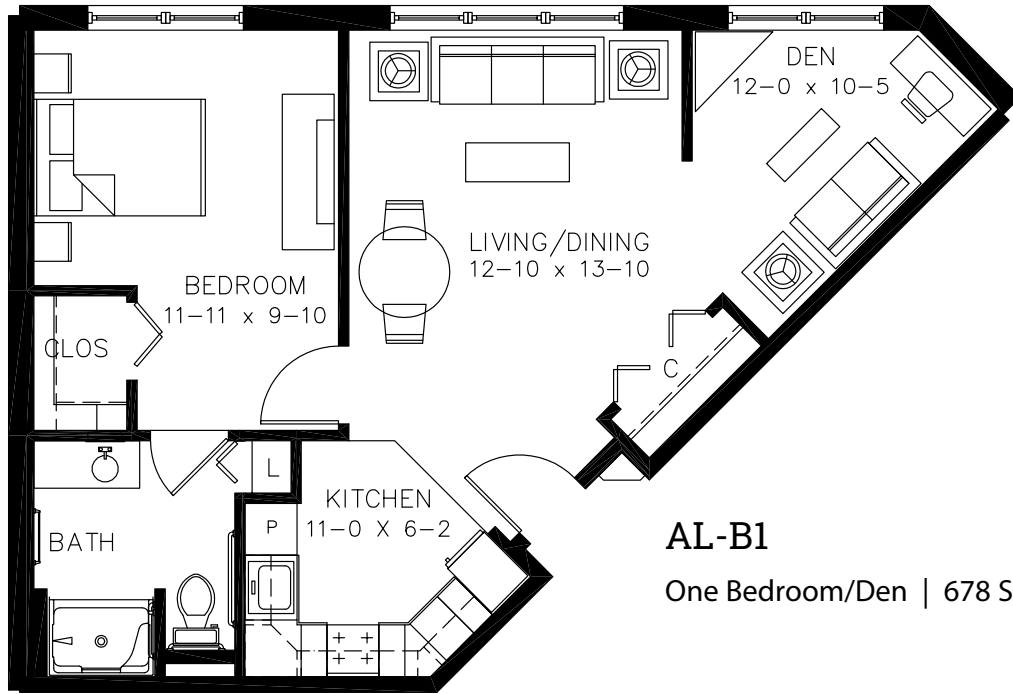
- Spacious open floor plans
- Refrigerator, stove/ self-cleaning oven
- Blinds on all windows
- Ample closet space
- Individually controlled heat and central air conditioning
- Bathroom with roll-in shower

Sample Floor Plans

AL-A6HC
Studio | 491 Sq. Ft.

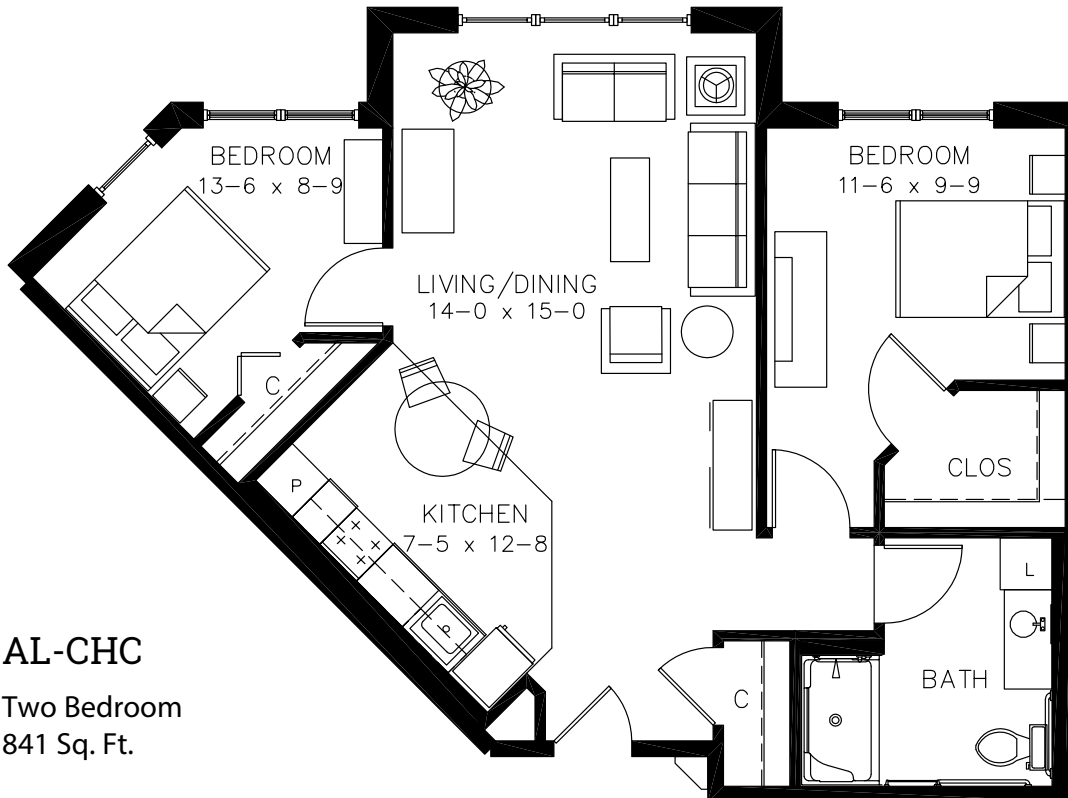


AL-A1
One Bedroom | 637 Sq. Ft.



AL-B1

One Bedroom/Den | 678 Sq. Ft.



AL-CHC

Two Bedroom
841 Sq. Ft.

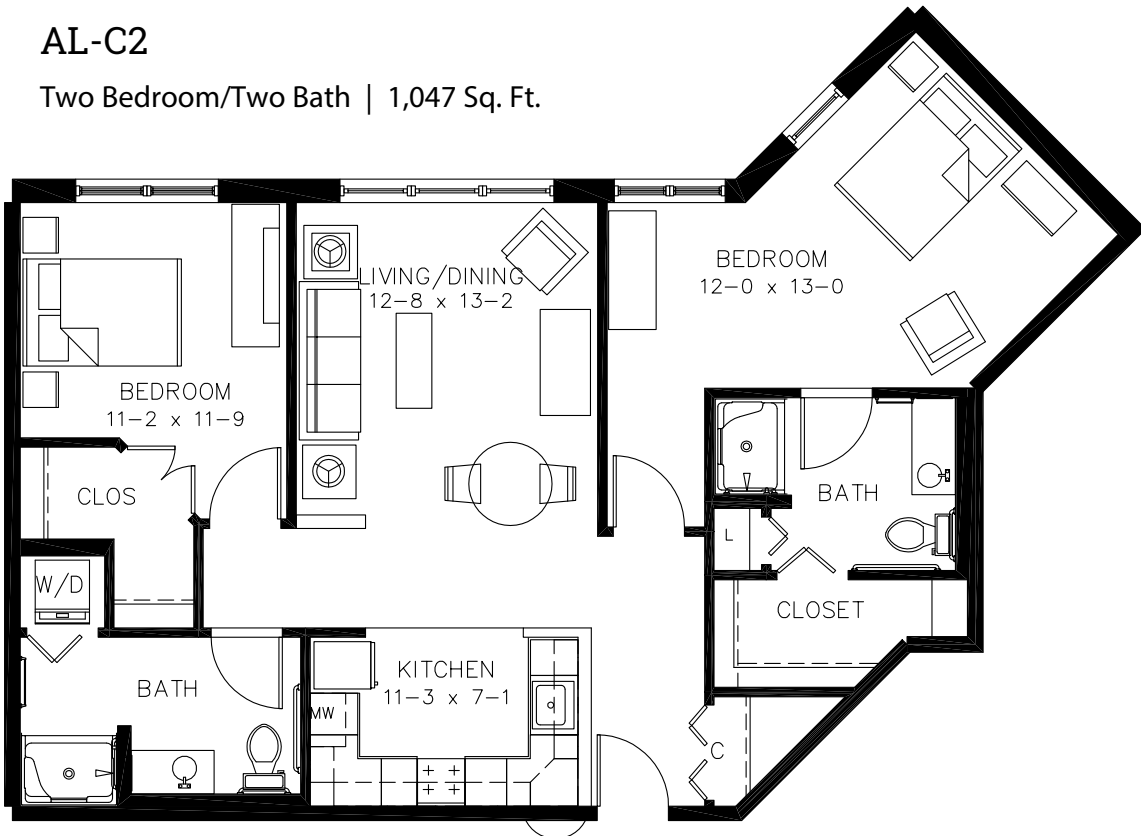
AL-C3

Two Bedroom | 954 Sq. Ft.



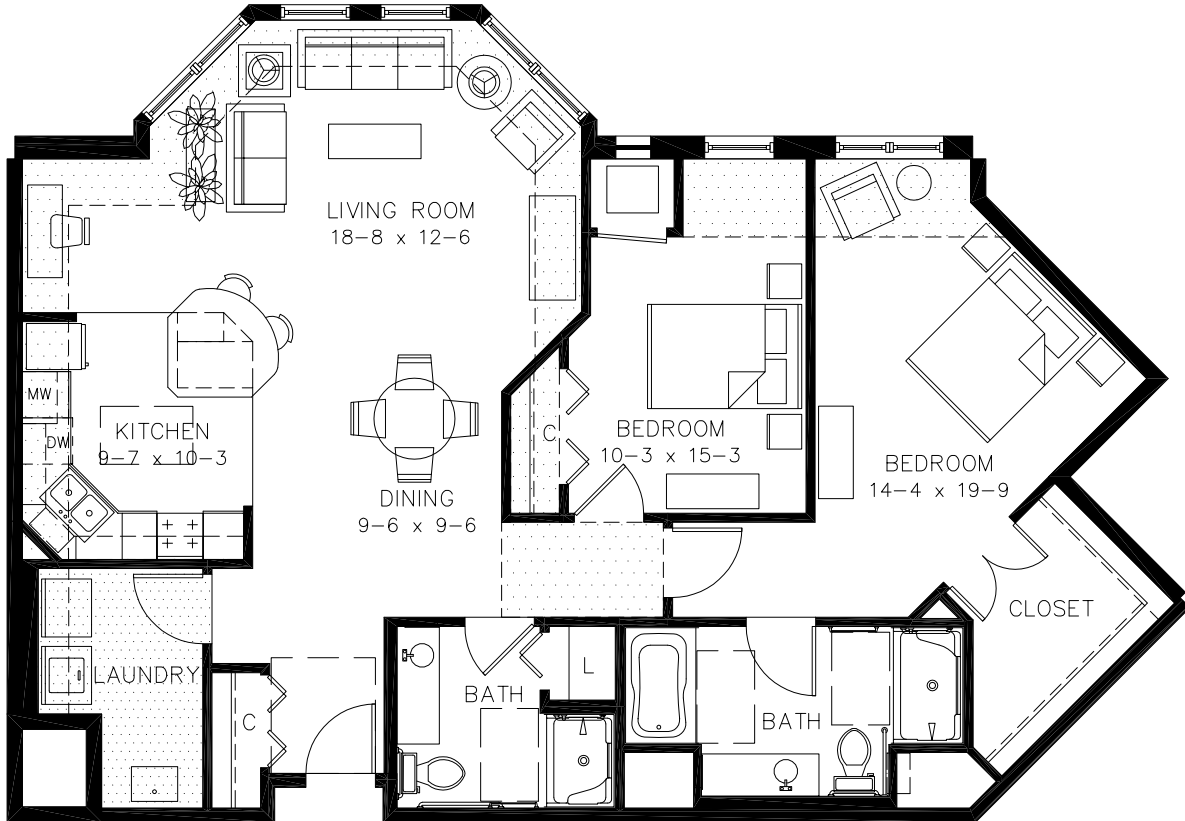
AL-C2

Two Bedroom/Two Bath | 1,047 Sq. Ft.



AL-C4

Two Bedroom/Two Bath | 1,344 Sq. Ft.



Floor plans, features and amenities are subject to change without notice. Stated dimensions and square footage are approximate. Additional floor plans may be available. Please ask about availability. All apartments are unfurnished.

At Walnut Ridge, we know each individual is just that—an individual. And our services reflect that philosophy. Select from a broad range of options depending on your personal preferences. It's all based on the principle of choice.
And the choice is yours.

Monthly Personal Care Fee Ranges*

Points from Assessment	Monthly Fee
0–32	Included in base rent
33–101	\$430–\$1,290
102–147	\$1,720–\$2,150
148–193	\$2,580–\$3,010
194–239	\$3,440–\$3,870

**The care fee ranges above are for estimating purposes only.*

Included in Your Personal Care Fees:

- Initial and ongoing nursing assessments
- Scheduled nursing hours and on-call nursing available for staff consultation
- Nurse liaison with health care professionals
- Nurse scheduling of lab draws
- Nurse maintaining clinical record information
- Daily reassurance check

Monthly Rental Fee

Apartment	Sq. Ft.	Rate
Studio	491	\$4,175
One Bedroom	637–1,135	\$4,825–\$7,150
Two Bedroom	841–1,344	\$6,165–\$7,310

Assisted Living Service Fees

In addition to the monthly rental fee, a monthly personal care fee for assisted living services is required based on the amount of care provided. The following steps help to assess your care needs and guide you through the residency process:

Step 1: Reserve an apartment at Walnut Ridge. We will help you through the reservation process and provide you with essential information in preparation for the following steps.

Step 2: Schedule an assisted living care assessment appointment. A nurse will meet with you to complete an initial assessment and help create a personalized service plan. The assessment will include a review of your individualized needs and a recommendation of services that could be provided to meet those needs. Each service is assigned a point value and the assessment will give you an estimated total number of points.* To view the care assessment, scan the QR code or visit WalnutRidgeAtClive.org and click on "Resident Documents."



Step 3: Schedule a residency agreement appointment. We will review the residency agreement, payment information and other resources with you. Once the residency agreement process is complete, your move-in date will be confirmed.

Pricing subject to change. Residency agreement available upon request.



515-457-1111

1701 Campus Drive
Clive, IA 50325

WalnutRidgeAtClive.org

Living Options

- Senior apartments
- Assisted living apartments
- Assisted living memory care residence
- Care center

Due to COVID-19 or other future circumstance, some features may be temporarily unavailable or offered in a different way. We anticipate features will become available in original form once it is prudent to do so. Presbyterian Homes & Services (PHS) communities comply with applicable federal civil rights laws and do not discriminate on the basis of race, color, national origin, age, disability or sex.

PresHomes.org

Español (Spanish): *Llame al 1-844-558-6125*

Hmoob (Hmong): *Hu rau 1-844-558-6125*

Tagalog (Filipino): *Tumawag sa 1-844-558-6125*

Professional management by PHS Management, LLC © 2021 Presbyterian Homes and Services
All faiths welcome. Equal housing opportunity.

9/23 

 **presbyterian
homes & services**
freedom to live well®