



# Walnut Ridge

The Arbor

Assisted Living Memory Care

# Welcome to Walnut Ridge

The Arbor memory care provides a vibrant neighborhood setting where dedicated staff serve the unique needs of each individual with warmth and compassion. Stimulating activities and personalized care assure families their loved one has the opportunity to live life to the fullest.

We believe that caring for the needs of those with dementia grants us an extraordinary opportunity for ministry. Our DOVE™ program is the culmination of many years of thoughtful consultation with staff, families, and leaders in the field of dementia research. DOVE™—Dementia Orientation Values Education—is a three-part approach to care that allows your loved one to receive the affirmation and reassurance they need.

Our dove lapel pin designates staff that have completed special training. The dove, a symbol of the Holy Spirit, symbolizes how each person is fully remembered by Him. Even with loss of memory, the spirit remains intact.

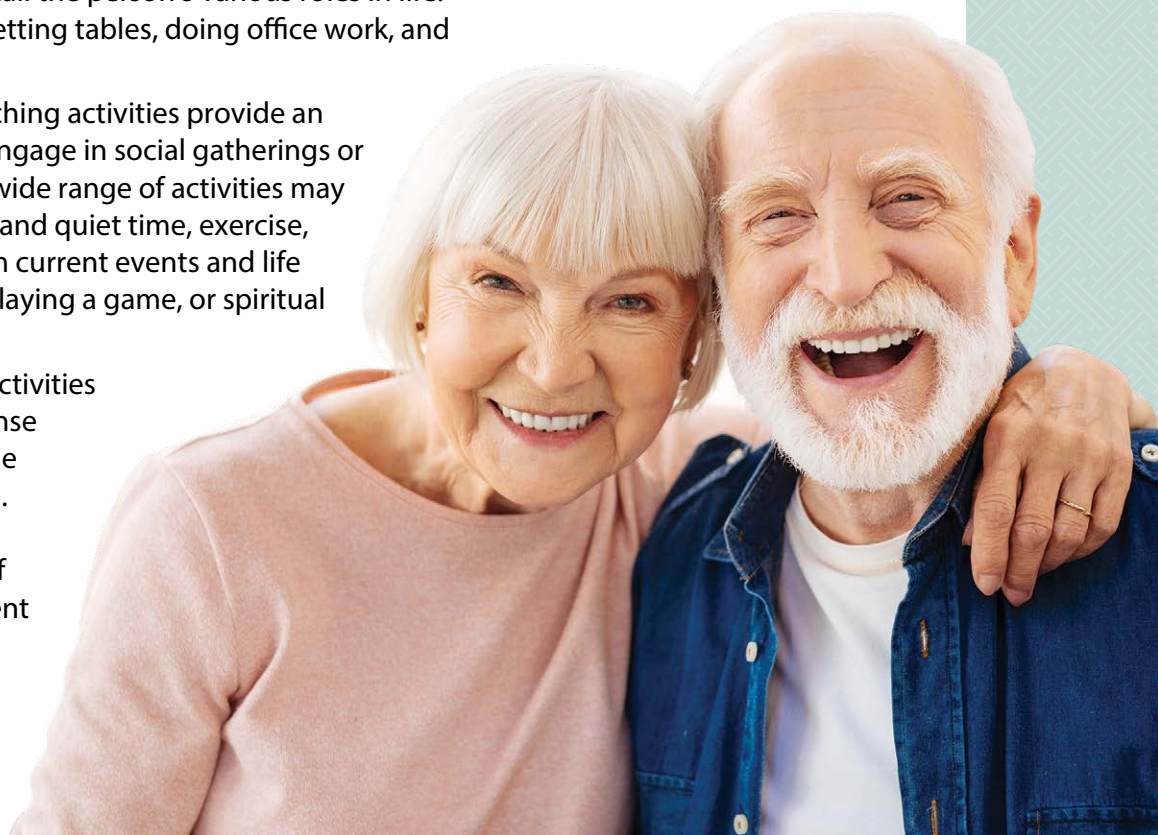
---

## The DOVE™ Program

We begin by assessing individual needs and creating a plan of care, and continue by supporting resident life-skills as well as involving and providing guidance to families. Encouraging independence and providing a sense of purpose, enjoyment, and success are our guiding principles.

Activities and specialized programming in three main areas are essential: life-skills, life-enrichment, and self-care.

- Life-skill activities help recall the person's various roles in life. Some examples include setting tables, doing office work, and sharing hobbies.
- Recreational and life-enriching activities provide an ongoing opportunity to engage in social gatherings or enjoy leisure activities. A wide range of activities may be offered such as leisure and quiet time, exercise, cognitive stimulation from current events and life review, baking, reading, playing a game, or spiritual reading and prayer.
- Participation in self-care activities gives each individual a sense of independence and pride and enhances self-esteem. Bathing, dressing and grooming are examples of cares in which each resident is encouraged to assist.



The Arbor strives to ensure the comfort and convenience of residents and their families. From our inclusive amenities to comprehensive care options, families gain peace of mind knowing their loved one has support with all the comforts of home.

## Distinctive Details

- Suite featuring private bathroom with roll-in shower
- Neutral carpet and finishes
- Vertical blinds on all windows
- Individually controlled heat and central air conditioning

## Included Amenities

- Three daily meals and snacks served in the family dining room
- Weekly light housekeeping and linen change
- The DOVE™ program
- Pastoral care
- Residential setting with controlled entrance
- Outdoor courtyard with walking path
- Utilities (heat, electric, central air conditioning, water, sewer, and trash)
- Telephone service
- Laundry (up to 3 loads per week)
- Expanded cable service
- Open public Wi-Fi
- Priority access to Presbyterian Homes & Services living and care options based on availability
- Smoke-free community

---

## Other Conveniences

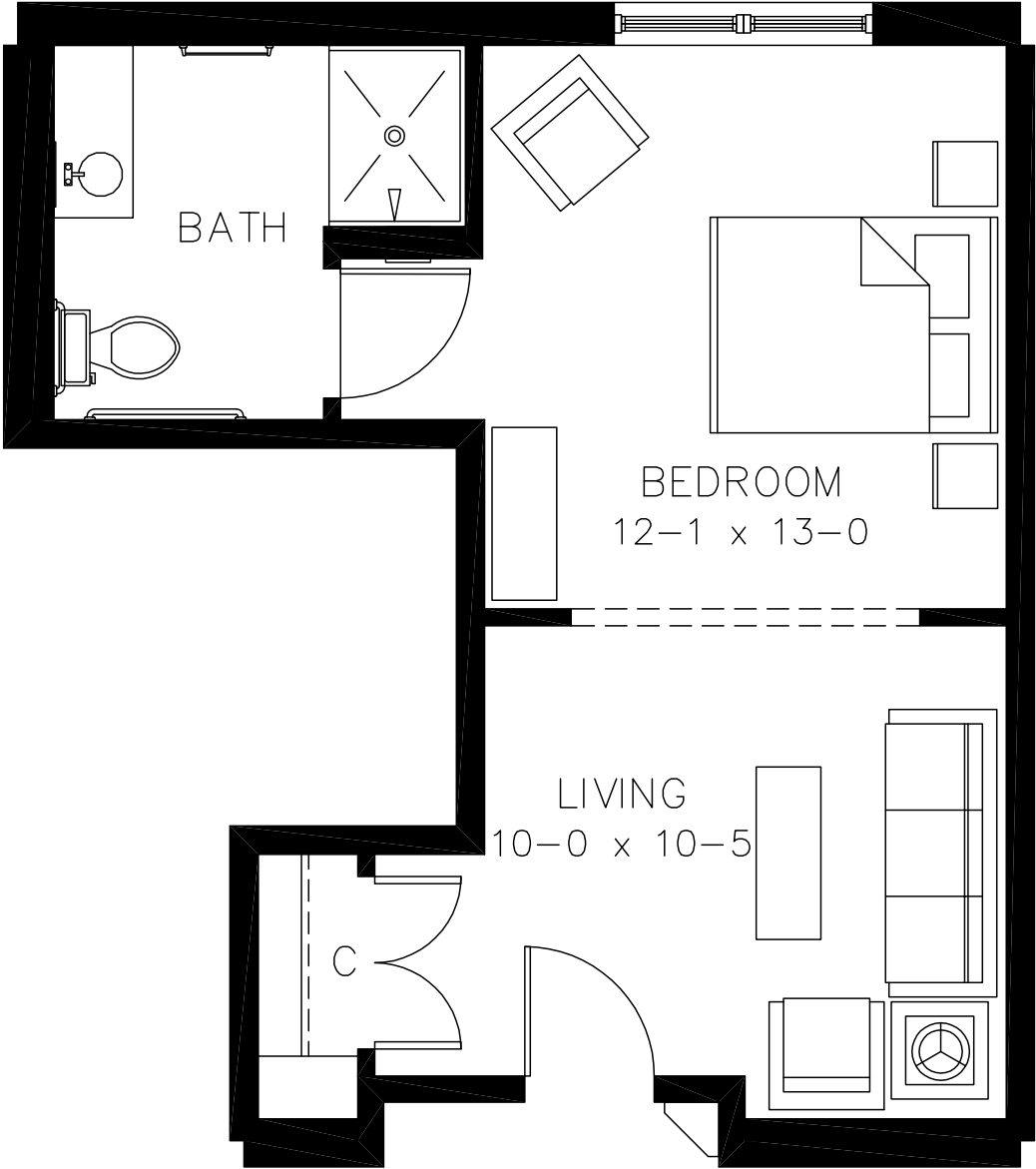
*Additional fees may apply*

- Second occupant
- Personal fitness trainer and supervisor
- Ridge Club membership
  - Multipurpose warm-water pool
  - Fitness center
  - Health and wellness programs
- Additional Registered Nurse services, such as long term care insurance paperwork
- Assistance with arranging transportation to medical and social service appointments
- Assistance with accessing community resources and social services
- Additional loads of laundry (3 per week included)
- Guest dining
- Guest suite
- Outpatient therapy — physical, occupational and speech therapy

# Sample Floor Plans

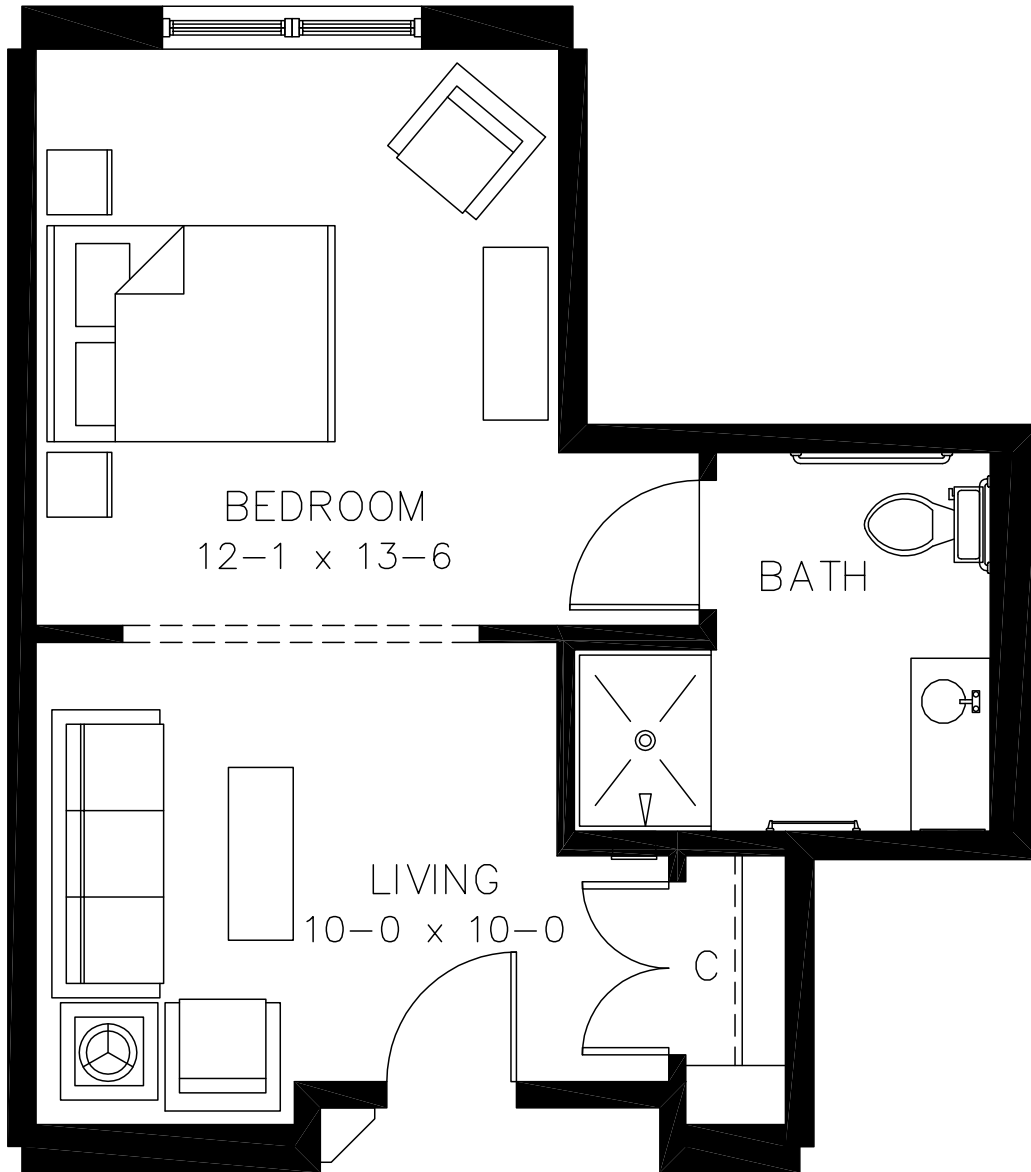
MC-2

Suite | 415 Sq. Ft.



# MC-1

Suite | 420 Sq. Ft.



*Floor plans, features and amenities are subject to change without notice. Stated dimensions and square footage are approximate. Additional floor plans may be available. Please ask about availability. All apartments are unfurnished.*

# Personal Care Services

Engaging programs and comforting amenities are just the beginning of the services provided.

A nurse is on site five days a week and available to resident care staff by phone 24 hours/day. Resident care assistants are present 24 hours a day to assist with resident needs.

Prior to starting services, a nurse completes a comprehensive assessment and determines your personal care needs during the assessment. An Individual Service Plan is written in collaboration with you, your family and physician.

---

## The following services are included in addition to the Individual Service Plan:

- Initial nursing assessment
- 24 hour on-site Resident Assistant staffing
- Medication management
- Reassurance and comfort care
- Escorts within the community
- Vital sign monitoring
- Nurse consultation with health care professionals as needed
- Nurse maintains clinical record
- Coordination of laboratory requests

At Walnut Ridge, we know each individual is just that—an individual. And our services reflect that philosophy. Select from a broad range of options depending on your personal preferences. It's all based on the principle of choice.  
**And the choice is yours.**

## Apartment Selection

Apartment	Sq. Ft.	Rate
Suite	415-593	\$6,335-\$6,760

*Pricing subject to change. Occupancy agreement available upon request.*





**515-457-1111**

1701 Campus Drive  
Clive, IA 50325

[WalnutRidgeAtClive.org](http://WalnutRidgeAtClive.org)

## Living Options

- Senior apartments
- Assisted living apartments
- Assisted living memory care residence
- Care center

*Due to COVID-19 or other future circumstance, some features may be temporarily unavailable or offered in a different way. We anticipate features will become available in original form once it is prudent to do so. Presbyterian Homes & Services (PHS) communities comply with applicable federal civil rights laws and do not discriminate on the basis of race, color, national origin, age, disability or sex.*

[PresHomes.org](http://PresHomes.org)

Español (Spanish): *Llame al 1-844-558-6125*

Hmoob (Hmong): *Hu rau 1-844-558-6125*

Tagalog (Filipino): *Tumawag sa 1-844-558-6125*

Professional management by PHS Management, LLC © 2021 Presbyterian Homes and Services  
All faiths welcome. Equal housing opportunity.

9/23 

 **presbyterian  
homes & services**  
*freedom to live well®*